

Stratigraphic and Structural Relations of the Birdbear Formation (Devonian), Western North Dakota

Jeffrey W. Bader

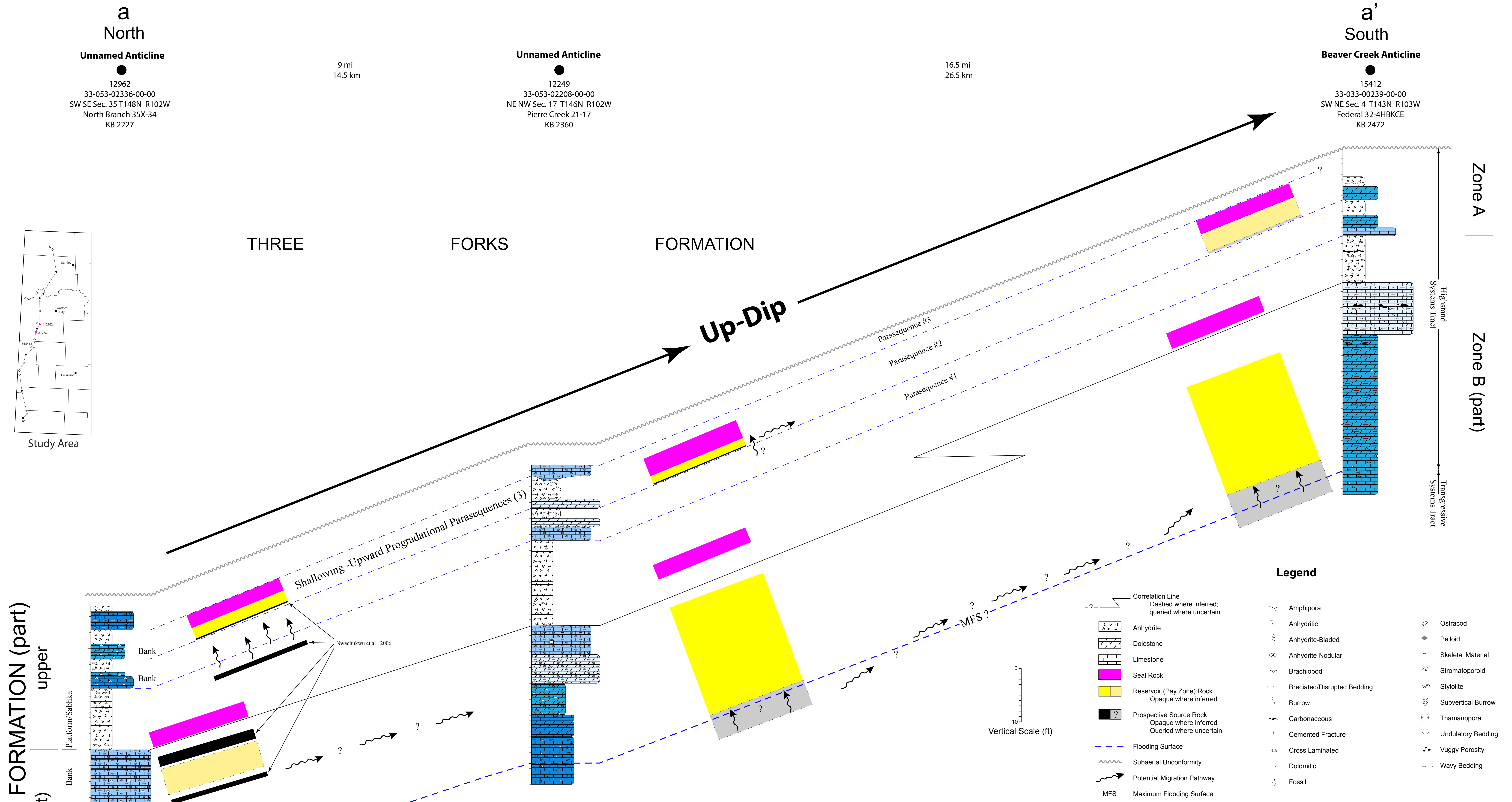
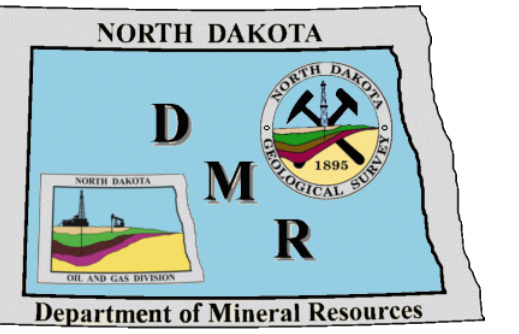


Figure 1. Cross-section a-a' showing lithology, correlations, and sequence stratigraphic relations for Birdbear Formation cores within the study area. See Plate 2, Figure 3 for cross-section location.

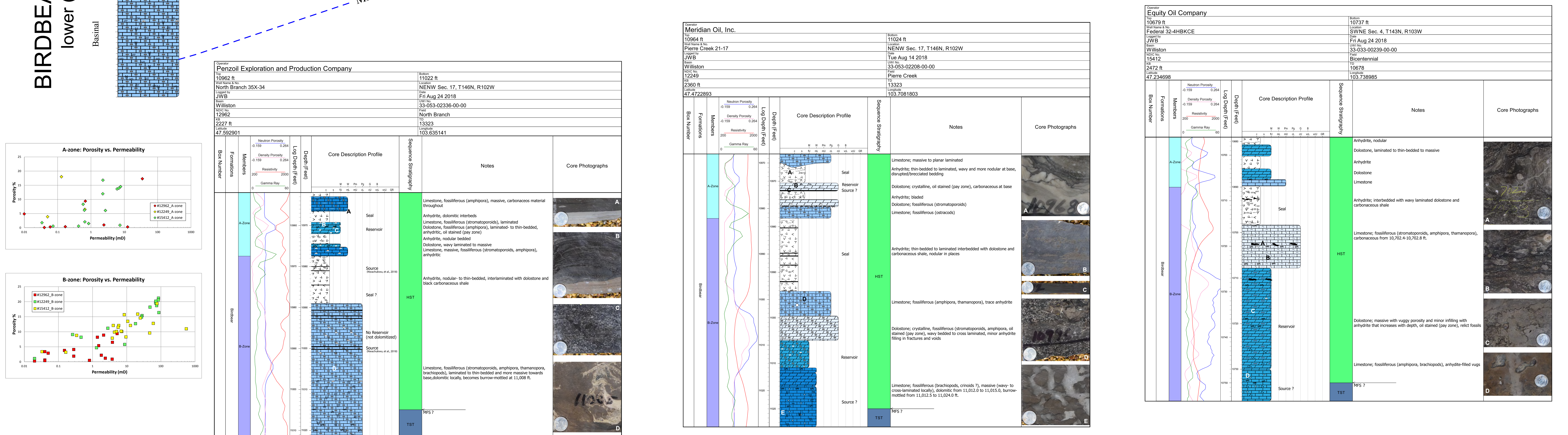


Figure 2. Lithologic descriptions, geophysical logs, photographs, and porosity/permeability cross-plots for A-zone/B-zone cores within the study area. Photographs and corresponding core location labeled with alpha characters. HST-highstand systems tract, MFS-maximum flooding surface, TST-transgressive systems tract.