



# Dunham Salt Thickness

*Williston Basin, North Dakota*

## POSTED WELL DATA

Dunham Salt Thickness (ft)

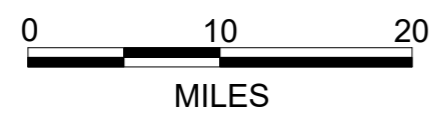
## WELL SYMBOLS

- Oil Well
- ☀ Gas Well
- Oil & Gas Well
- Dry Hole
- Injection Well
- Suspended Well
- Junked
- Temporarily Abandoned
- Dry Hole, With Show of Oil
- Dry Hole, With Show of Oil & Gas
- Dry Hole, With Show of Gas
- Plugged Gas Well
- Other (Observation, Service, Disposal)
- Plugged Oil Well

## MAP PROJECTION

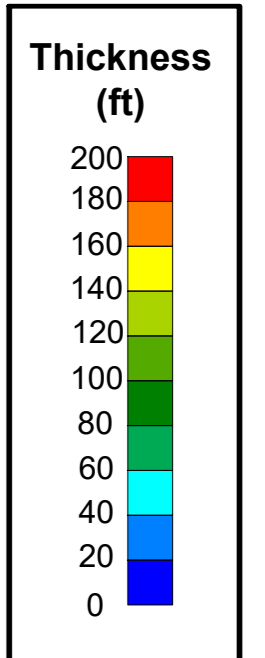
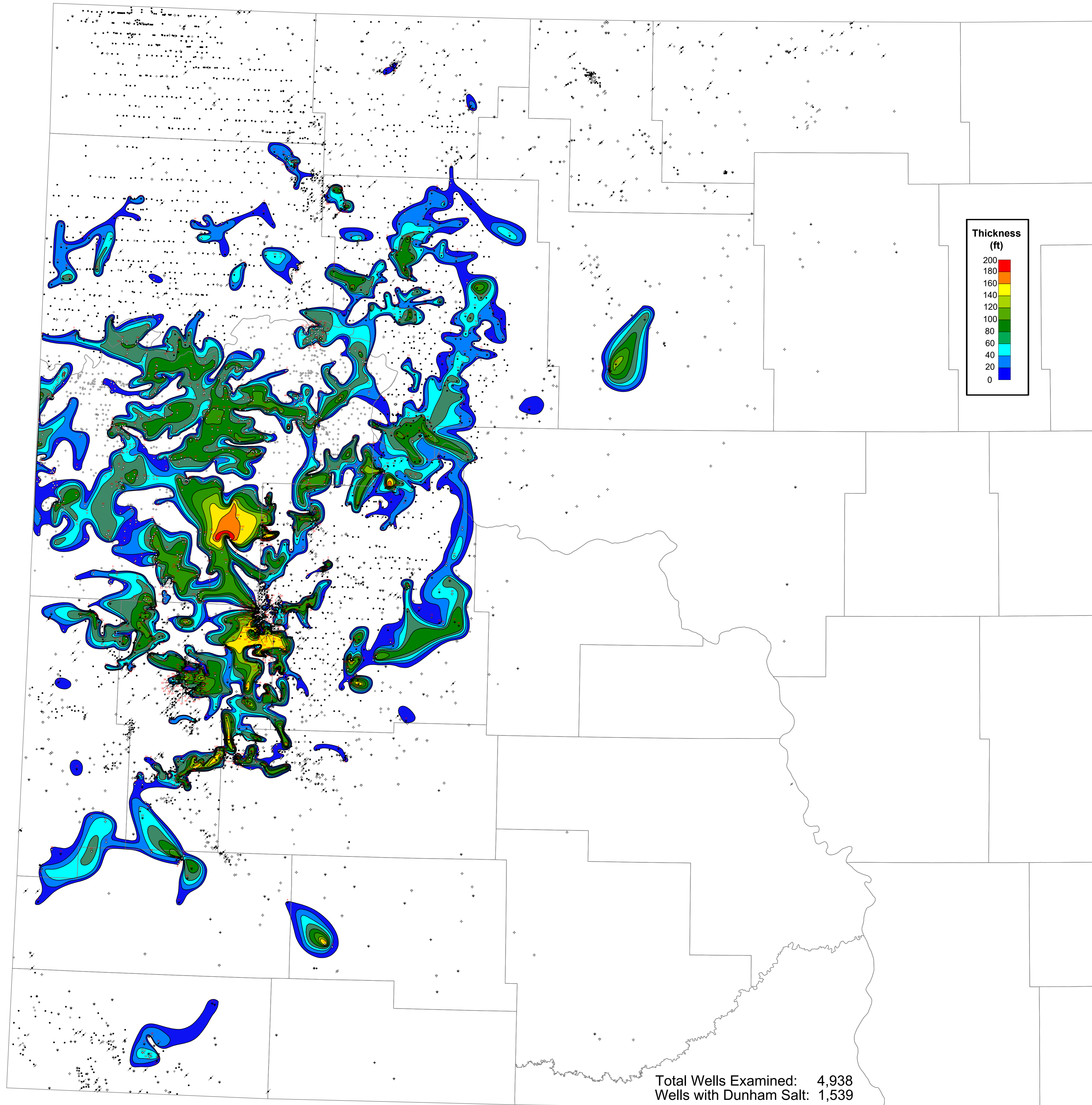
North Dakota North 3301  
 North American Datum 1927 (NAD27)  
 XY IN US FEET

Blue Marble Projection Details  
 Datum: North American Datum 1927 (NAD27)  
 Ellipsoid: Clarke 1866  
 Projection: Lambert Conformal Conic (2-Parallel)  
 Central Meridian: -100.5000000  
 False Easting: 2000000.00 US Survey Feet (usft)  
 False Northing: 0.00 US Survey Feet (usft)  
 Latitude Of Origin: 47.0000000  
 Standard Parallel1: 47.4333333  
 Standard Parallel2: 48.7333333  
 Scale Factor At Origin: 1  
 EPSG: 32020



Contour Interval: 20 ft

Mapped by: Travis D. Stolldorf



Total Wells Examined: 4,938  
 Wells with Dunham Salt: 1,539