



Pine Salt Thickness

Williston Basin, North Dakota

POSTED WELL DATA

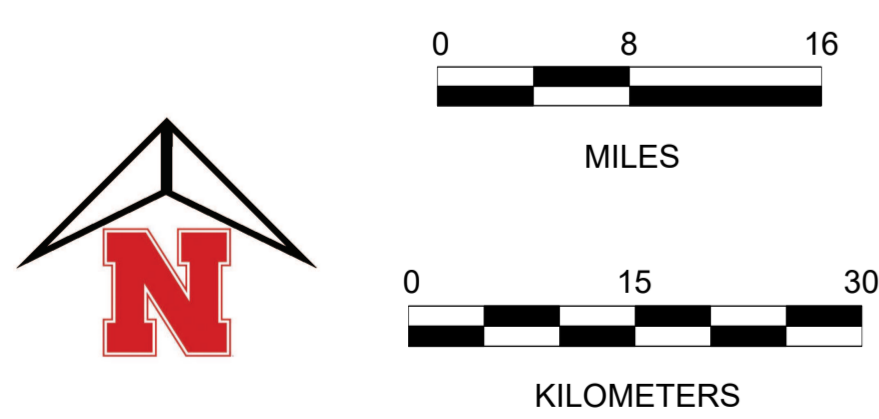
Pine Salt Thickness (ft)

WELL SYMBOLS

- Dry Hole, With Show of Gas
- Dry Hole, With Show of Oil & Gas
- Dry Hole, With Show of Oil
- Dry Hole
- Gas Well
- Injection Well
- Junked
- Oil & Gas Well
- Oil Well
- Other (Observation, Service, Disposal)
- Plugged & Abandoned Gas Well
- Plugged And Abandoned Oil and Gas Well
- Plugged & Abandoned Oil Well
- Plugged Gas Well
- Plugged Oil Well
- Shut-in Oil and Gas
- Temporarily Abandoned

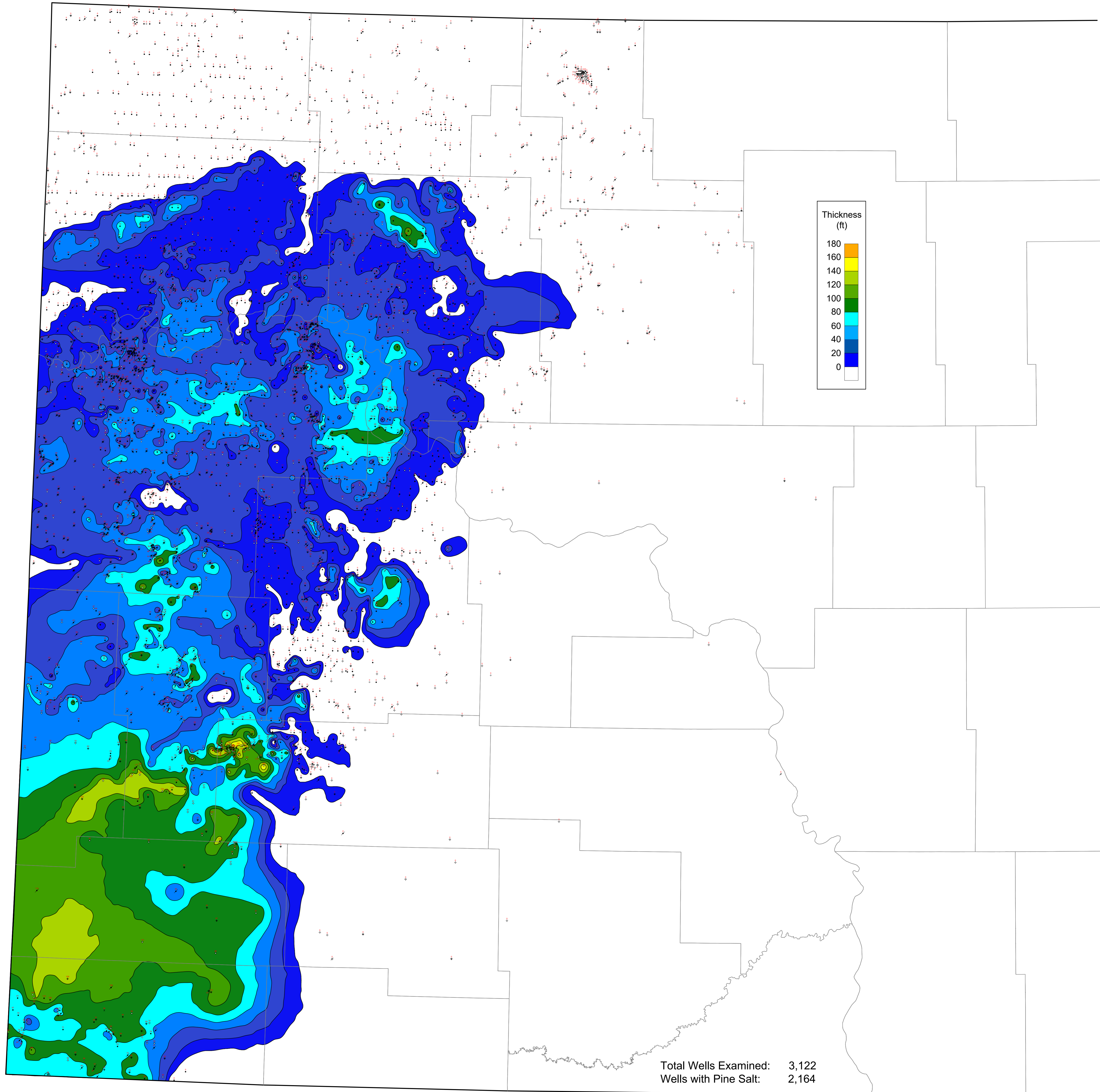
MAP PROJECTION

North Dakota North 3301
North American Datum 1927 (NAD27)
XY IN US FEET
Blue Marble Projection Details
Datum: North American Datum 1927 (NAD27)
Ellipsoid: Clarke 1866
Projection: Lambert Conformal Conic (2-Parallel)
Central Meridian: -100.5000000
False Easting: 2000000.00 US Survey Feet (usft)
False Northing: 0.00 US Survey Feet (usft)
Latitude Of Origin: 47.0000000
Standard Parallel1: 47.4333333
Standard Parallel2: 48.7333333
Scale Factor At Origin: 1
EPSG: 32020



Contour Interval: 20 ft

Mapped By: Travis D. Stoll Dorf



Total Wells Examined: 3,122
Wells with Pine Salt: 2,164