

# Charles A Salt Structure SSTVD

*Williston Basin, North Dakota*

## MAP DATA

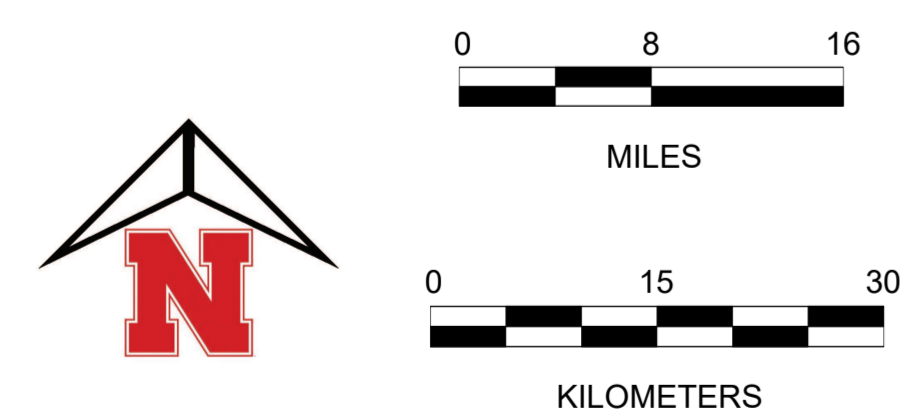
Charles A Salt structure picked on the uppermost occurrence of salt in the Charles A evaporite interval

## WELL SYMBOLS

- Dry Hole, With Show of Gas
- Dry Hole, With Show of Oil & Gas
- Dry Hole, With Show of Oil
- Dry Hole
- Gas Well
- Injection Well
- Injection Well
- Junked
- Oil & Gas Well
- Oil Well
- Other (Observation, Service, Disposal)
- Plugged and Abandoned
- Plugged And Abandoned Oil and Gas Well
- Plugged & Abandoned Oil Well
- Plugged Gas Well
- Plugged Oil Well
- Shut-in Oil and Gas
- Temporarily Abandoned

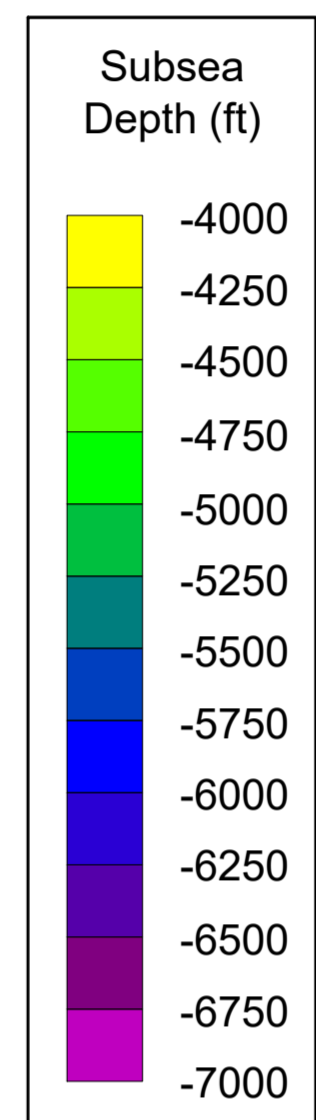
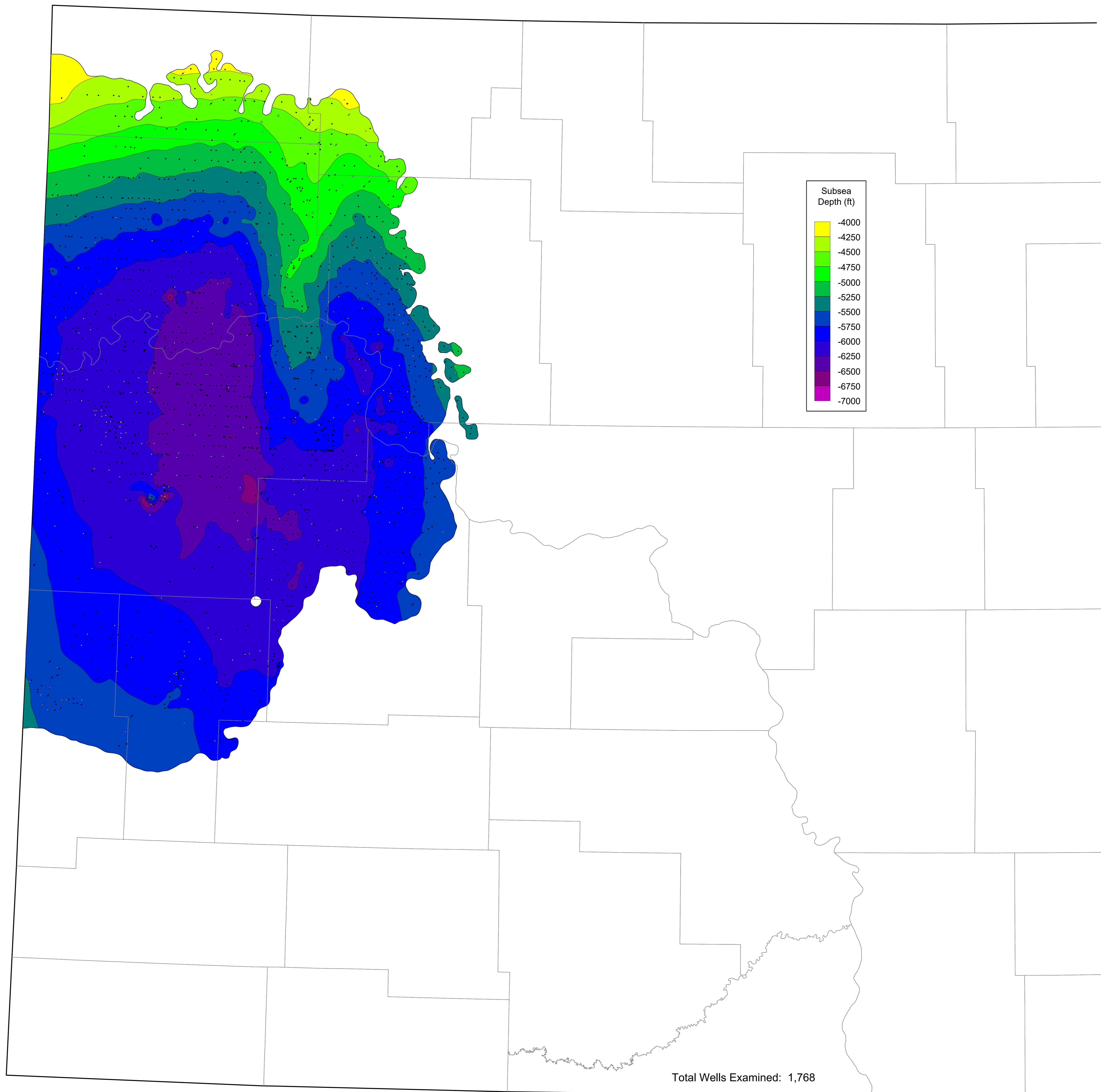
## MAP PROJECTION

North Dakota North 3301  
North American Datum 1927 (NAD27)  
XY IN US FEET  
Blue Marble Projection Details  
Datum: North American Datum 1927 (NAD27)  
Ellipsoid: Clarke 1866  
Projection: Lambert Conformal Conic (2-Parallel)  
Central Meridian: -100.5000000  
False Easting: 2000000.00 US Survey Feet (usft)  
False Northing: 0.00 US Survey Feet (usft)  
Latitude Of Origin: 47.0000000  
Standard Parallel1: 47.4333333  
Standard Parallel2: 48.7333333  
Scale Factor At Origin: 1  
EPSG: 32020



Subsea Contour Interval: 250 ft

Mapped By: Travis D. Stollendorf



Total Wells Examined: 1,768