

Charles A Salt Structure TVD

Williston Basin, North Dakota

MAP DATA

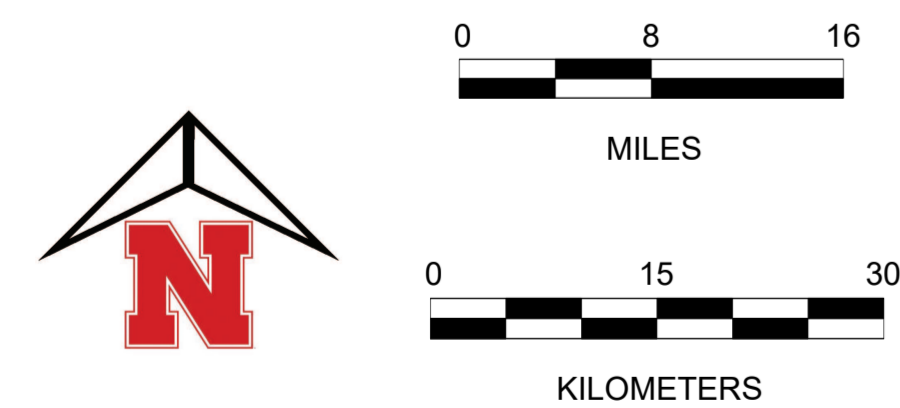
Charles A Salt structure picked on the uppermost occurrence of salt in the Charles A evaporite interval

WELL SYMBOLS

- Dry Hole, With Show of Gas
- Dry Hole, With Show of Oil & Gas
- Dry Hole, With Show of Oil
- Dry Hole
- Gas Well
- Injection Well
- Injection Well
- Junked
- Oil & Gas Well
- Oil Well
- Other (Observation, Service, Disposal)
- Plugged and Abandoned
- Plugged And Abandoned Oil and Gas Well
- Plugged & Abandoned Oil Well
- Plugged Gas Well
- Plugged Oil Well
- Shut-in Oil and Gas
- Temporarily Abandoned

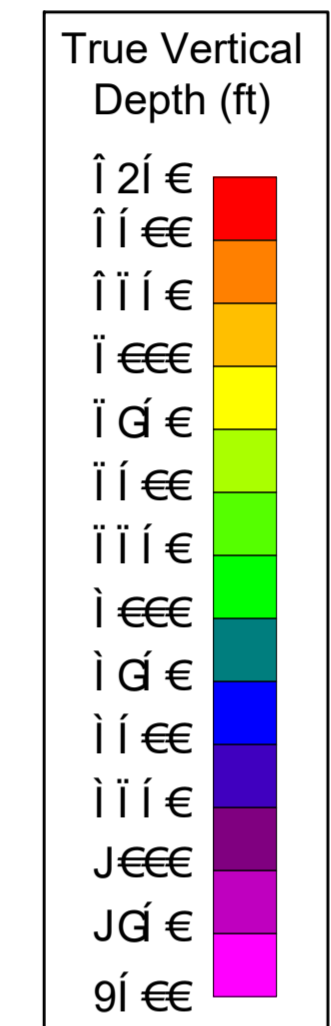
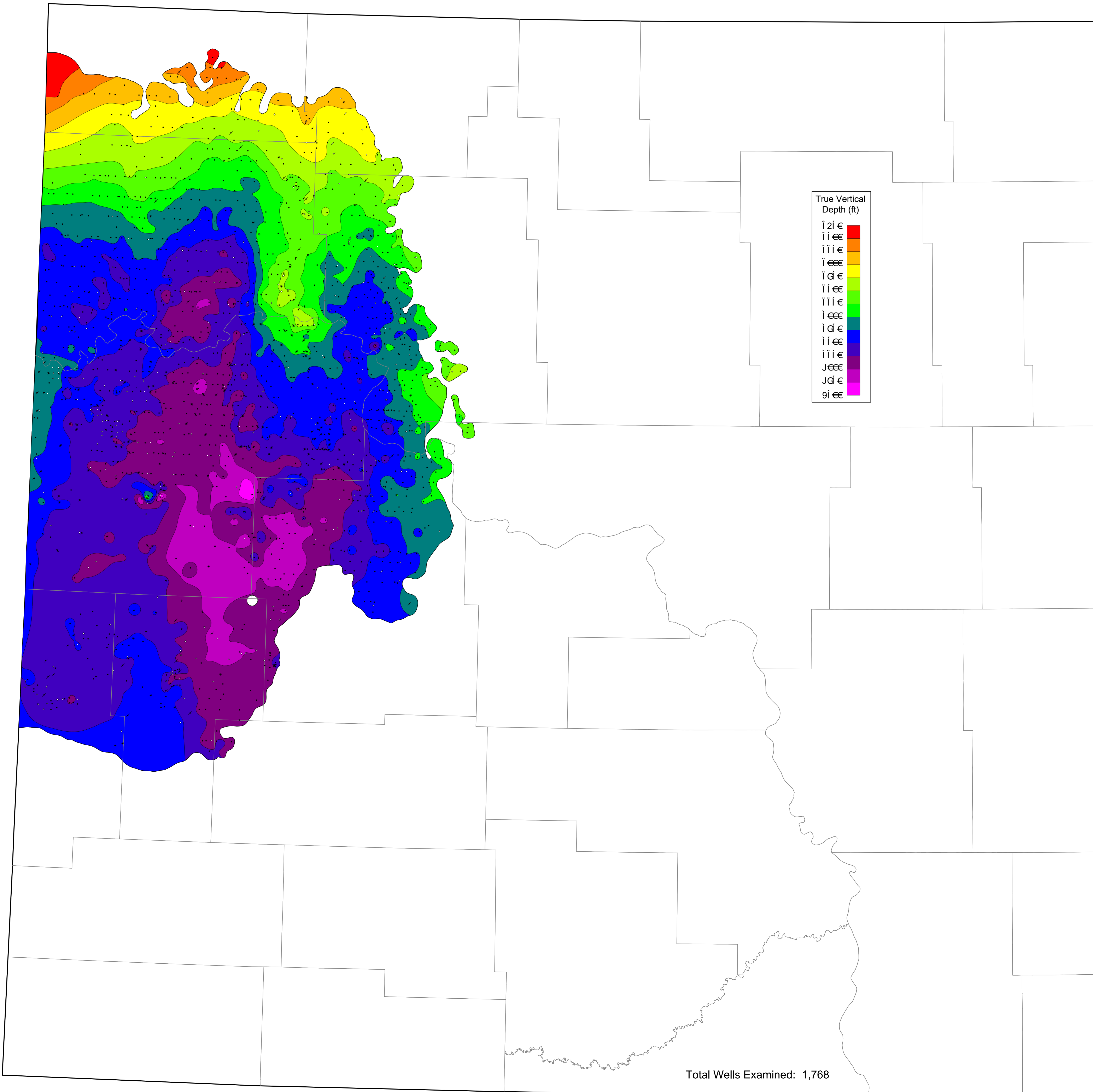
MAP PROJECTION

North Dakota North 3301
 North American Datum 1927 (NAD27)
 XY IN US FEET
 Blue Marble Projection Details
 Datum: North American Datum 1927 (NAD27)
 Ellipsoid: Clarke 1866
 Projection: Lambert Conformal Conic (2-Parallel)
 Central Meridian: -100.5000000
 False Easting: 2000000.00 US Survey Feet (usft)
 False Northing: 0.00 US Survey Feet (usft)
 Latitude Of Origin: 47.0000000
 Standard Parallel1: 47.4333333
 Standard Parallel2: 48.7333333
 Scale Factor At Origin: 1
 EPSG: 32020



TVD Contour Interval: 250 ft

Mapped By: Travis D. Stollendorf



Total Wells Examined: 1,768