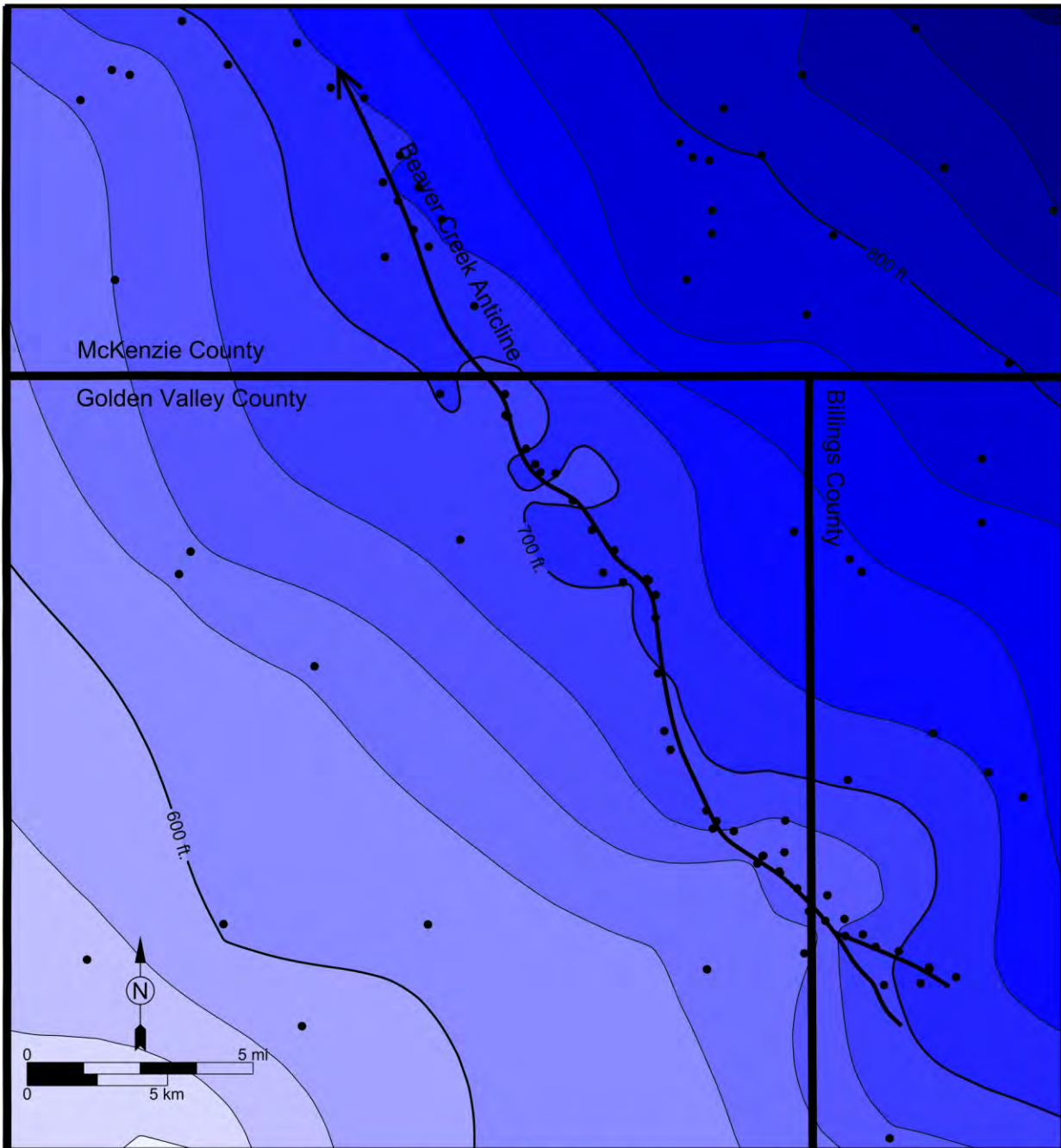
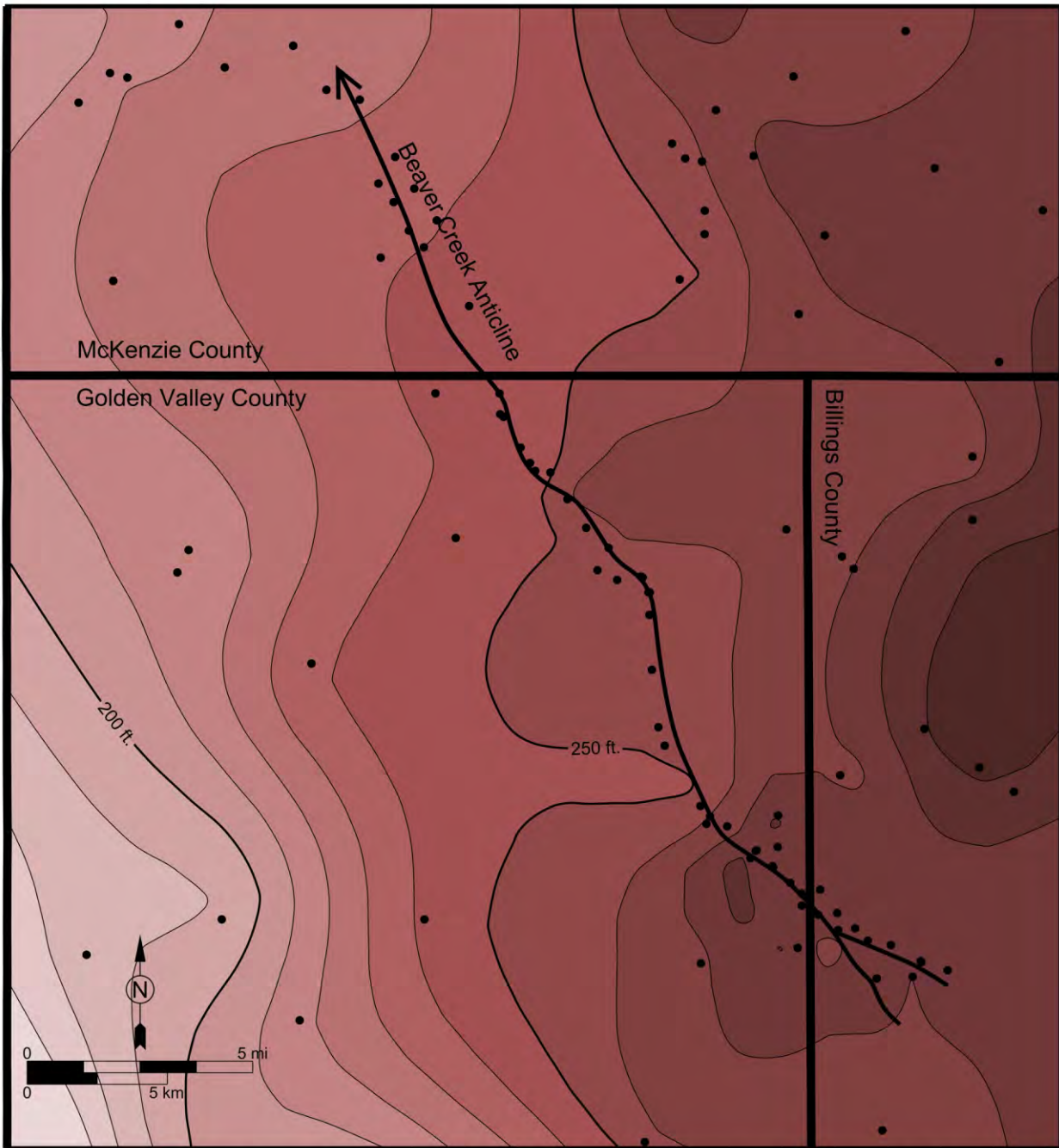


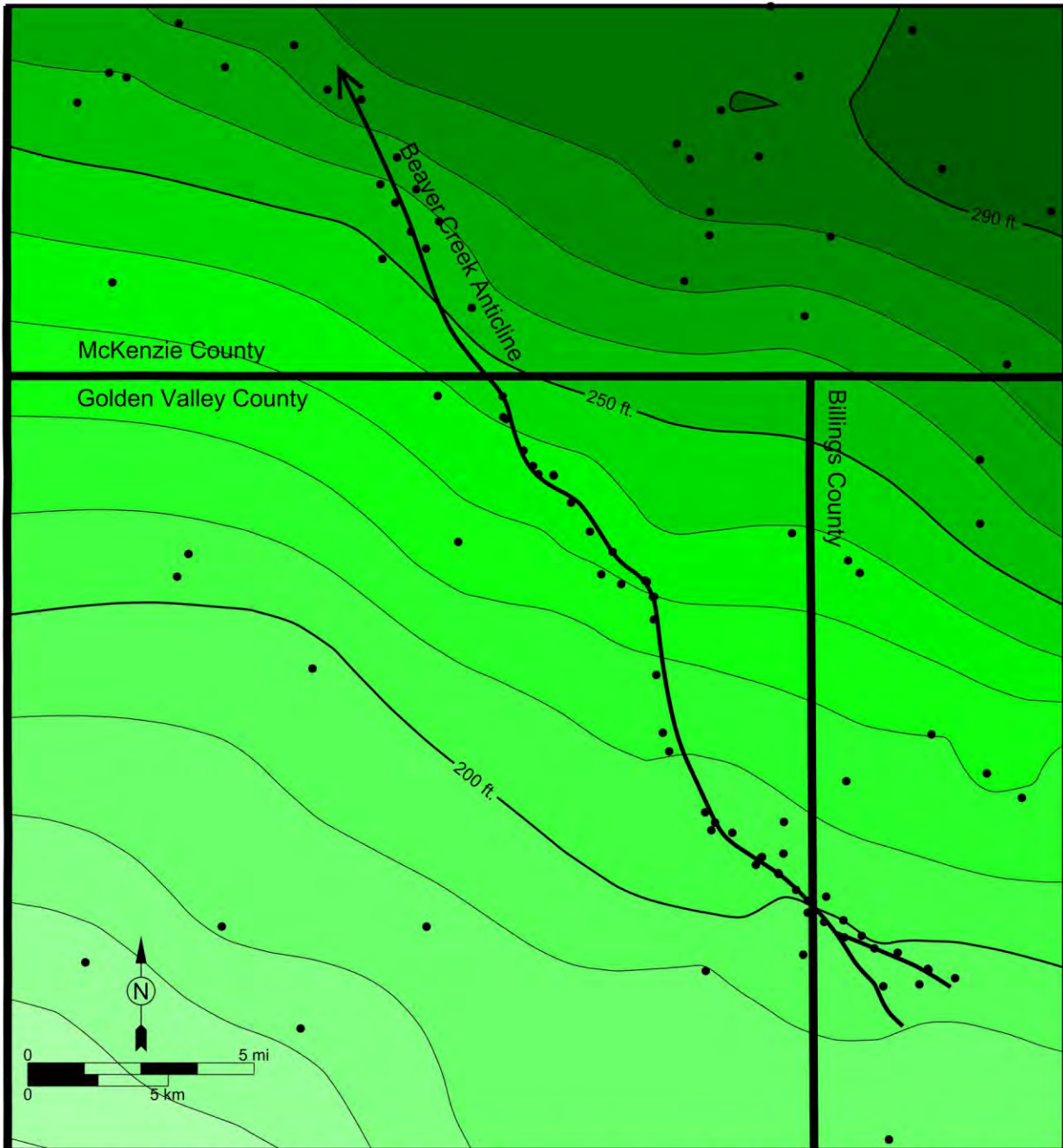
Partial stratigraphic column for North Dakota showing the geologic intervals that were examined as isopach maps by this study.



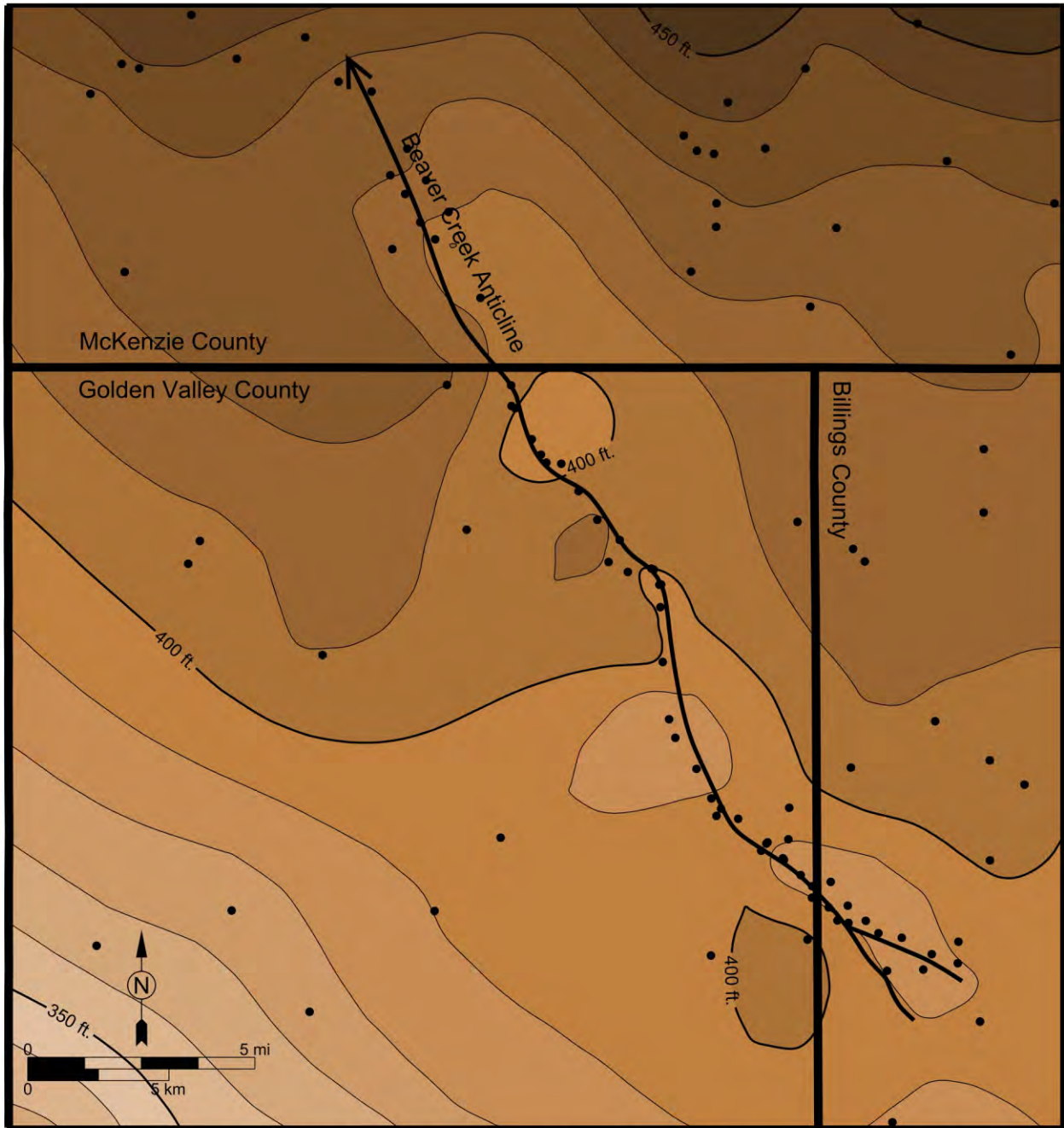
Isopach map of the Interlake Formation within the study area showing the axial trace of the Beaver Creek Anticline from Figure 1. Isopach contours were generated using available well control (black dots) within the map module of Petra©.



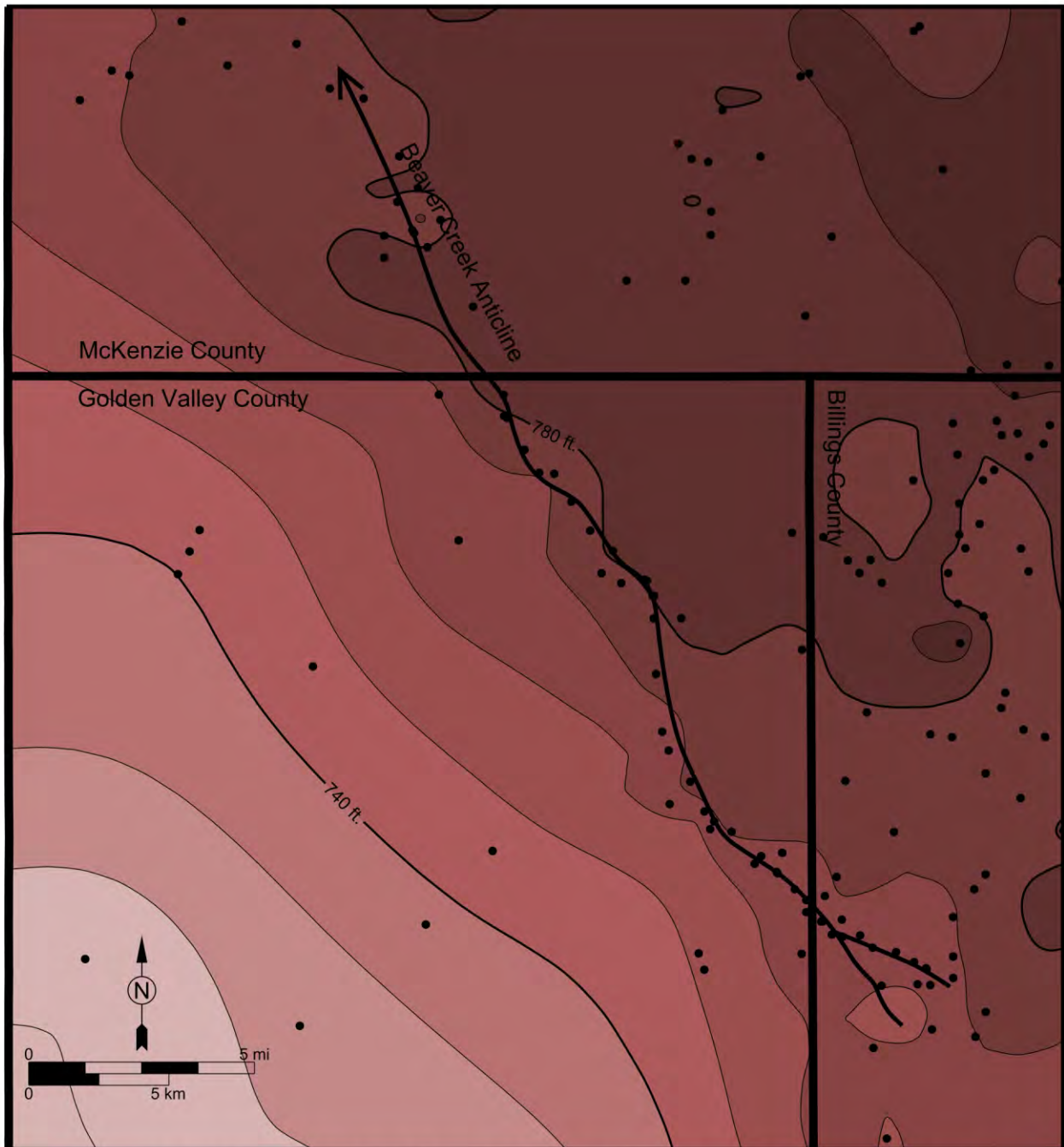
Isopach map of the Elk Point Formation within the study area showing the axial trace of the Beaver Creek Anticline from Figure 1. Isopach contours were generated using available well control (black dots) within the map module of Petra©.



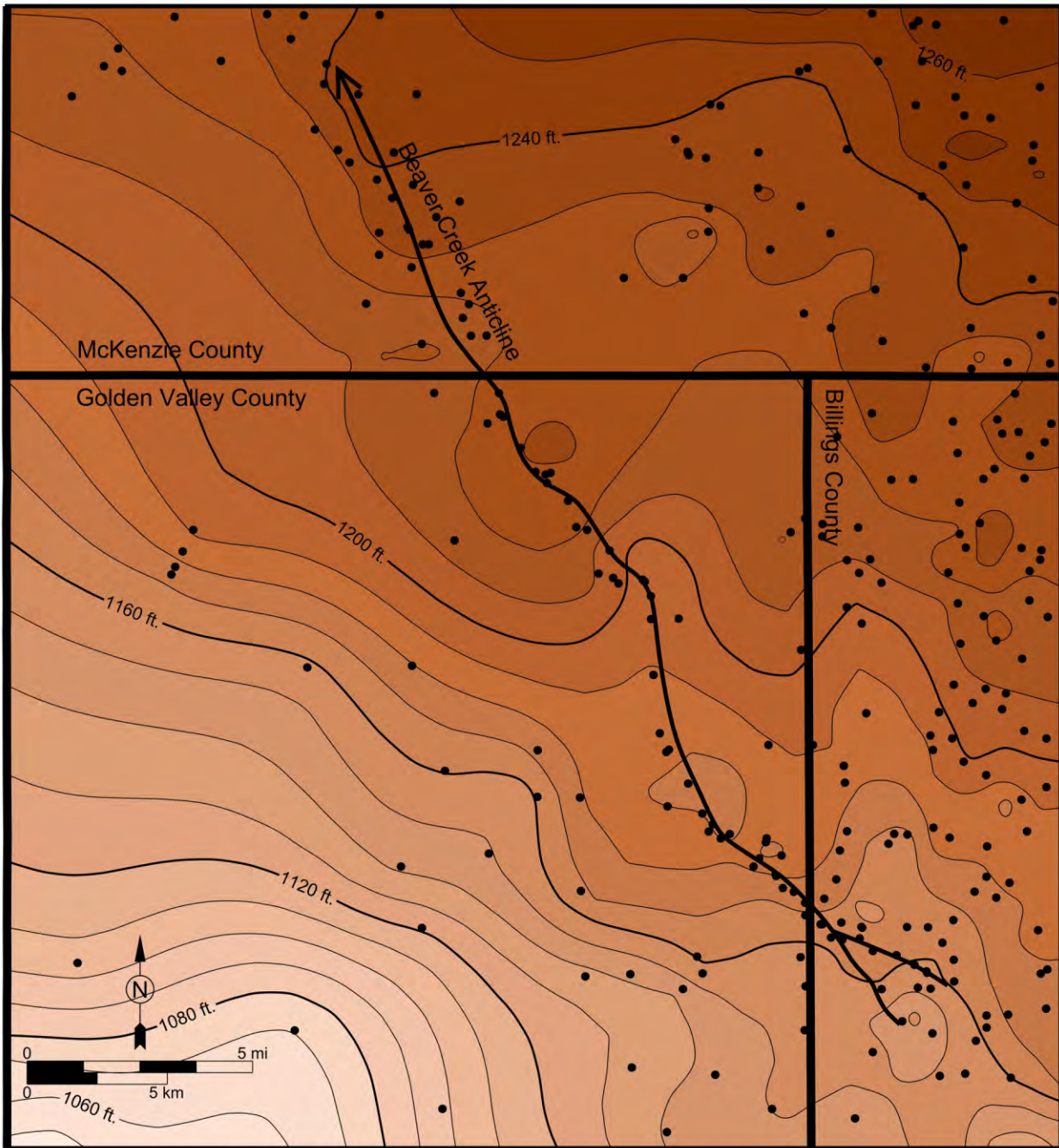
Isopach map of the Manitoba Group within the study area showing the axial trace of the Beaver Creek Anticline from Figure 1. Isopach contours were generated using available well control (black dots) within the map module of Petra©.



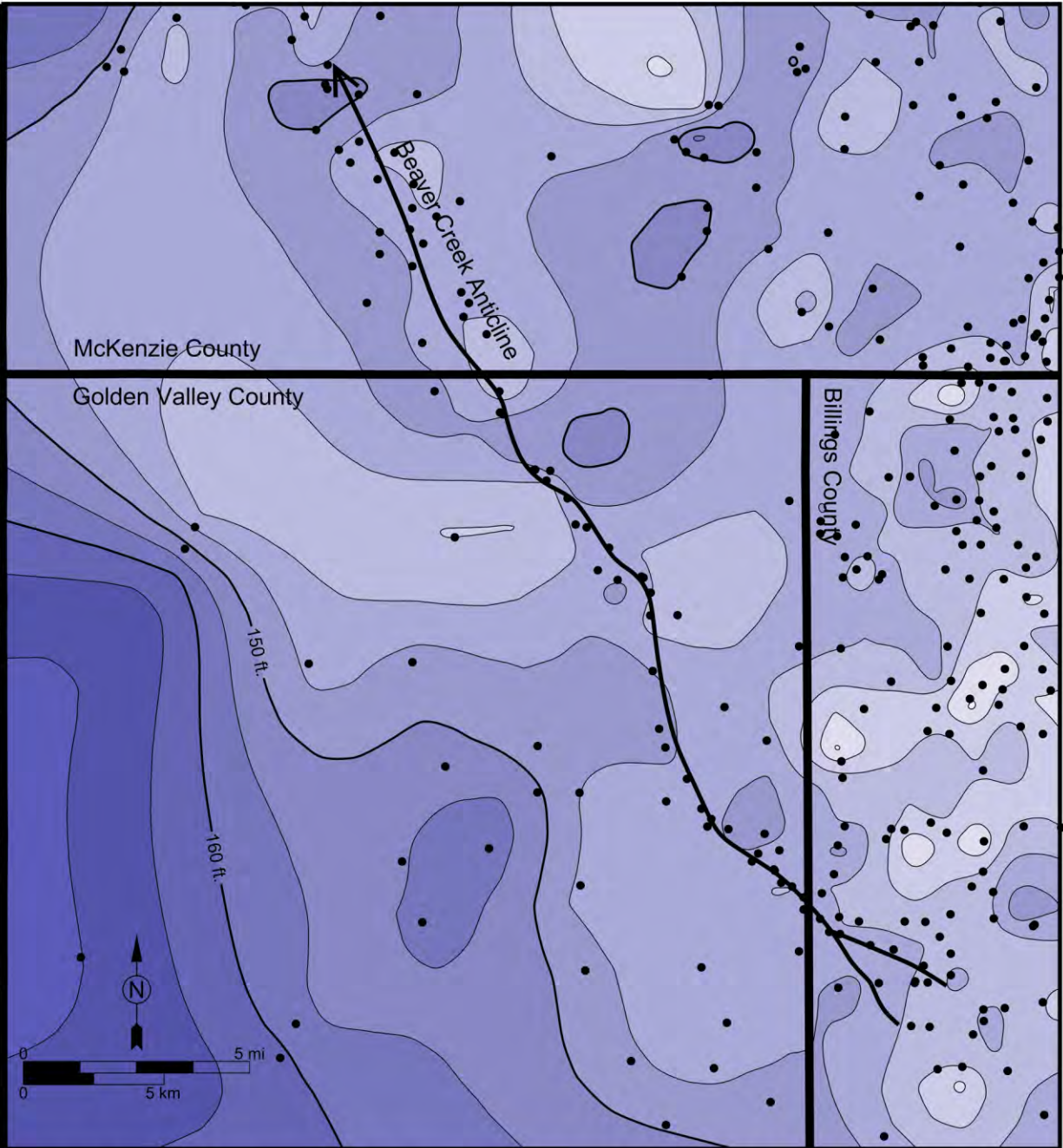
Isopach map of the Jefferson Group within the study area showing the axial trace of the Beaver Creek Anticline from Figure 1. Isopach contours were generated using available well control (black dots) within the map module of Petra©.



Isopach map of the Lodgepole Formation within the study area showing the axial trace of the Beaver Creek Anticline from Figure 1. Isopach contours were generated using available well control (black dots) within the map module of Petra©.

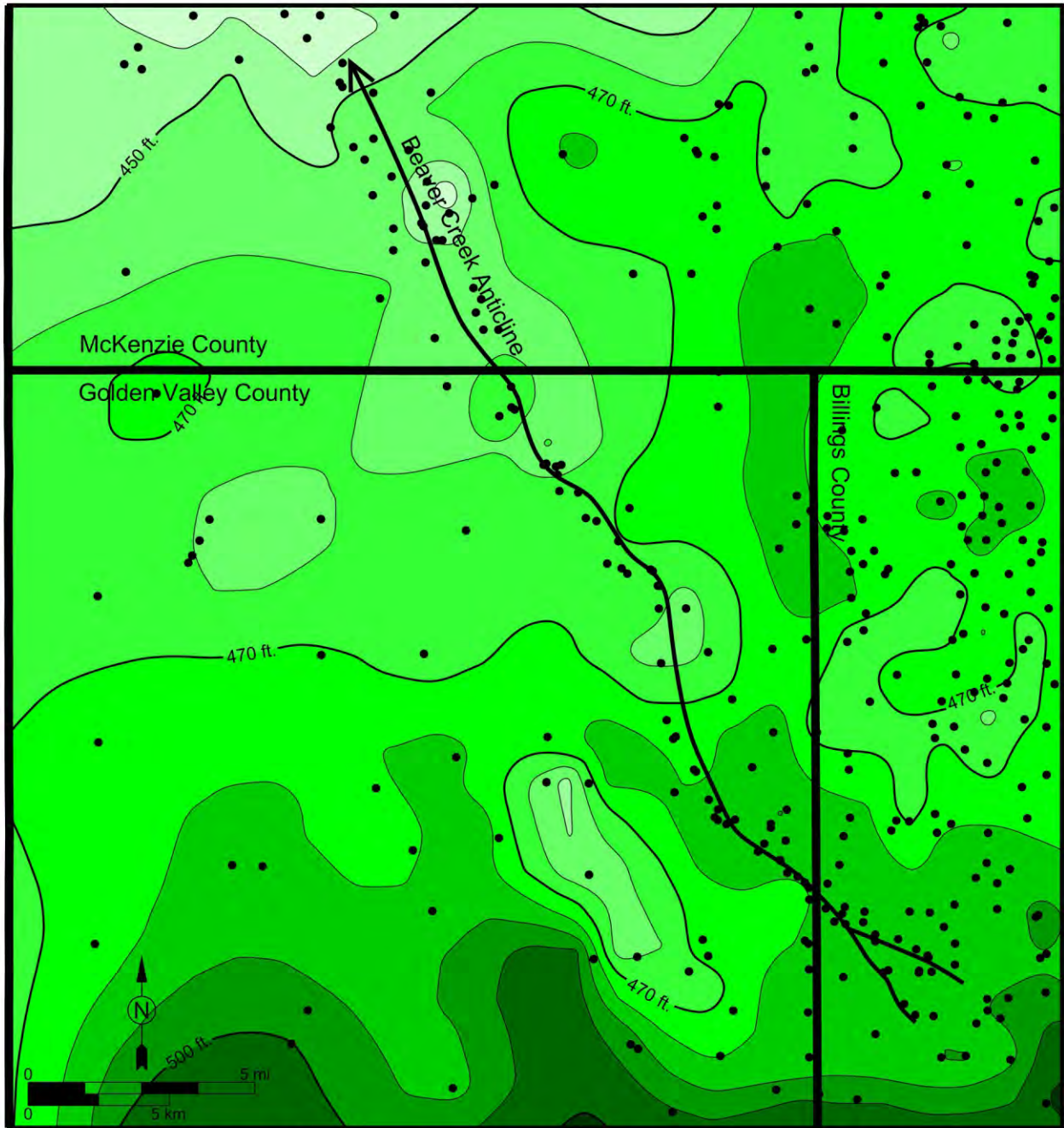


Isopach map of the Charles/ Mission Canyon Formations within the study area showing the axial trace of the Beaver Creek Anticline from Figure 1. Isopach contours were generated using available well control (black dots) within the map module of Petra©.



Isopach map of the Mowry Formation within the study area showing the axial trace of the Beaver Creek Anticline from Figure 1. Isopach contours were generated using available well control (black dots) within the map module of Petra©.





Isopach map of the Greenhorn Formation within the study area showing the axial trace of the Beaver Creek Anticline from Figure 1. Isopach contours were generated using available well control (black dots) within the map module of Petra©.