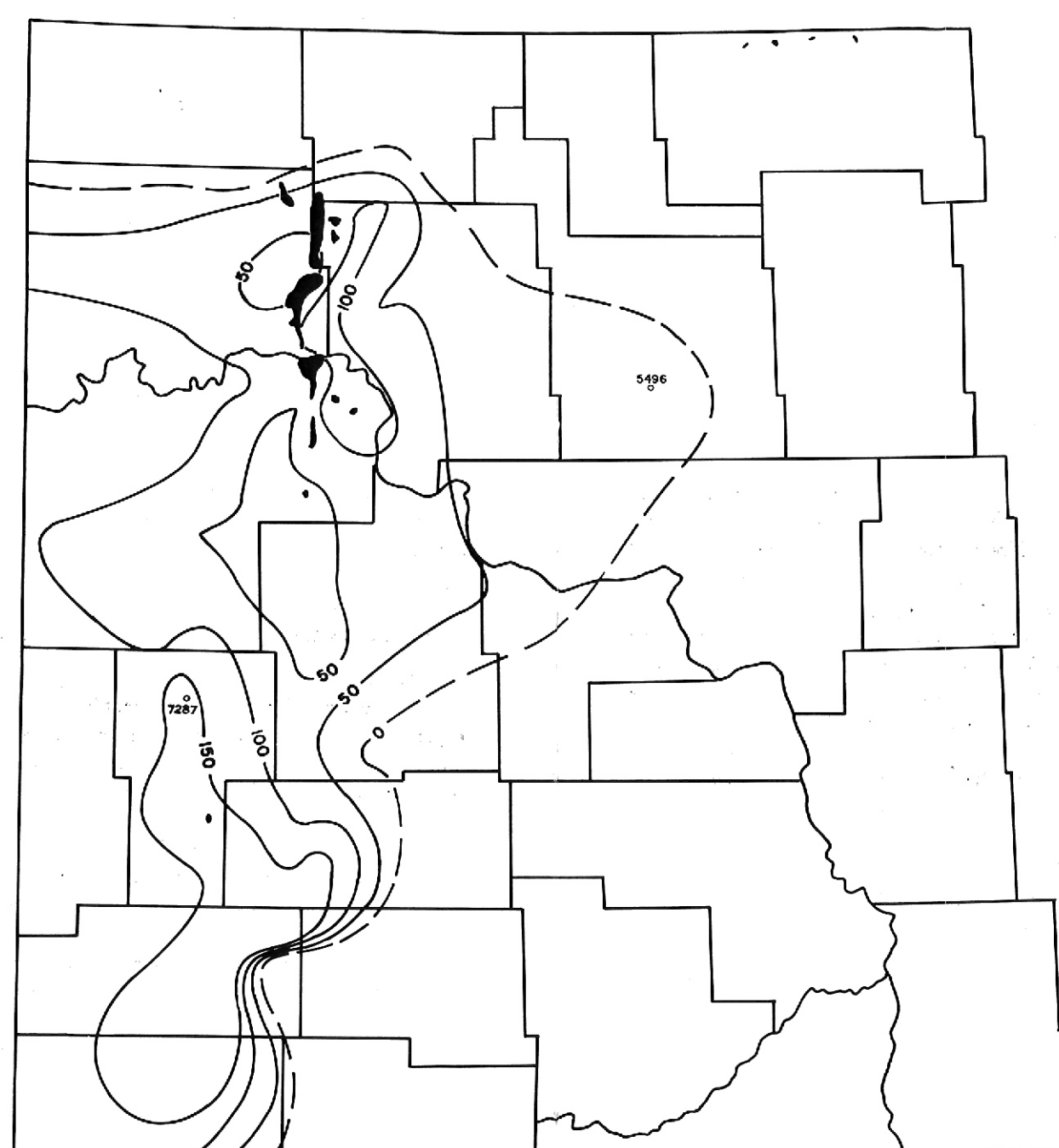
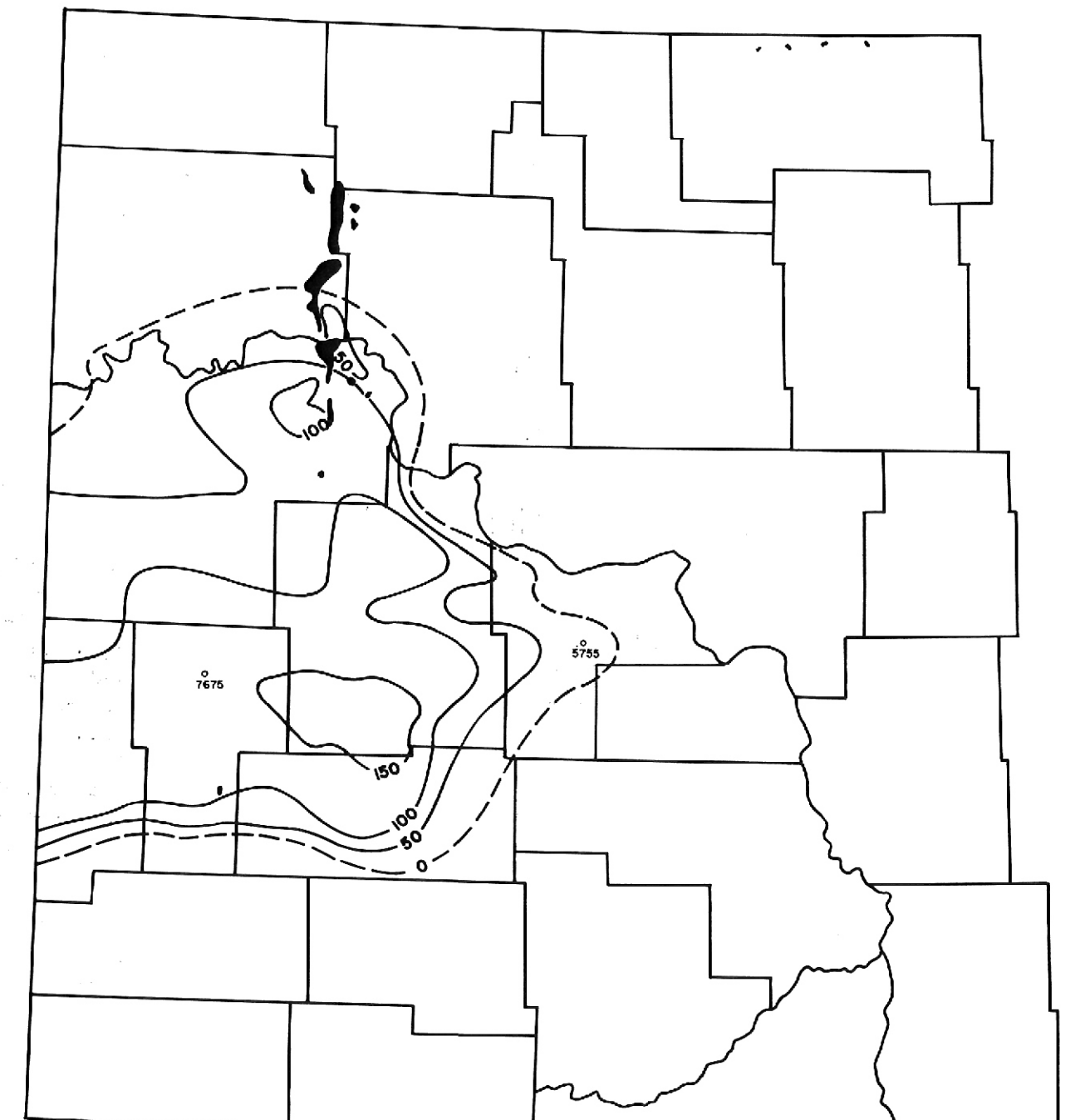


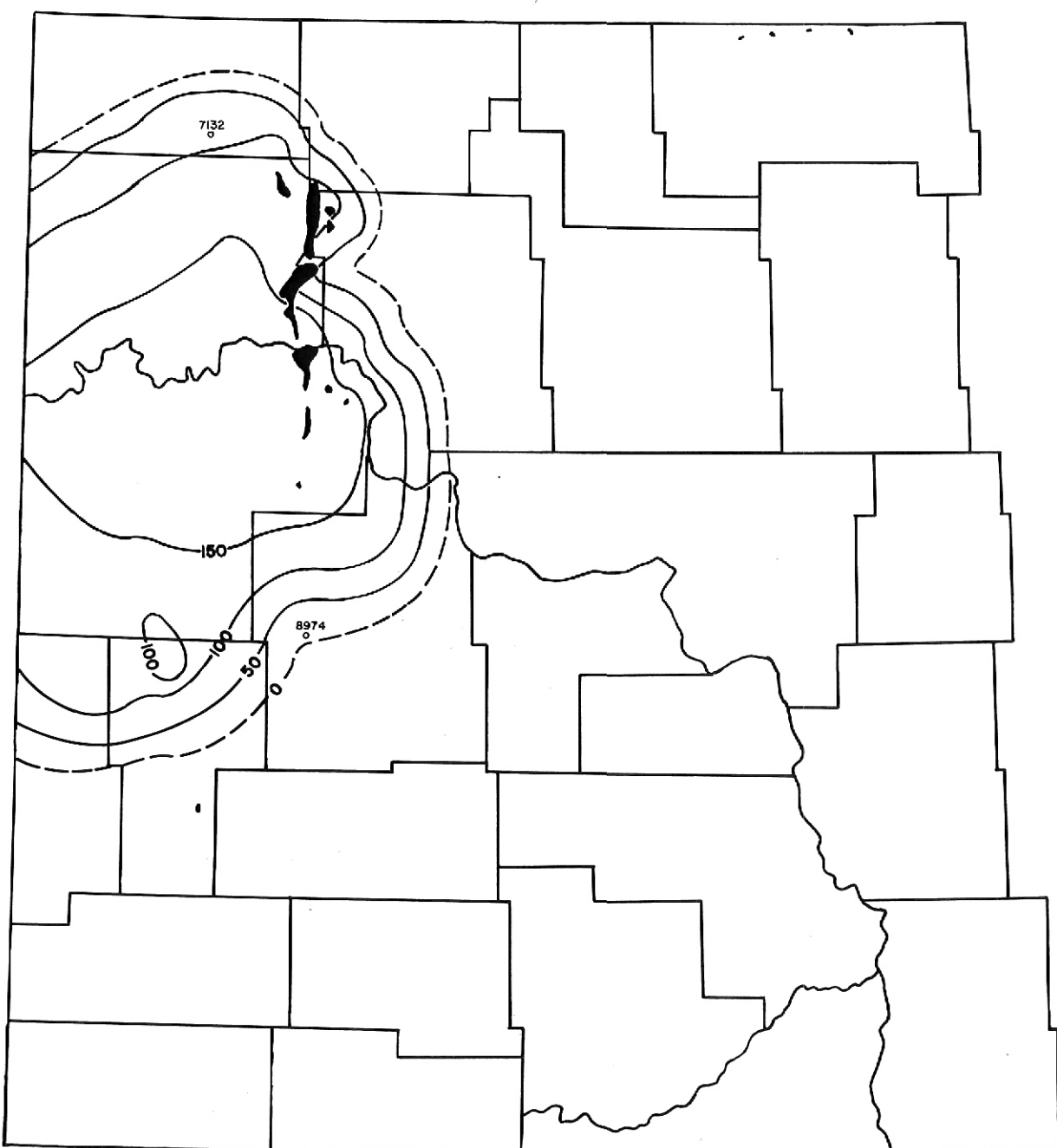
CONTOUR INTERVAL - 50 FEET  
Figure 1 - TRIASSIC "A" SALT



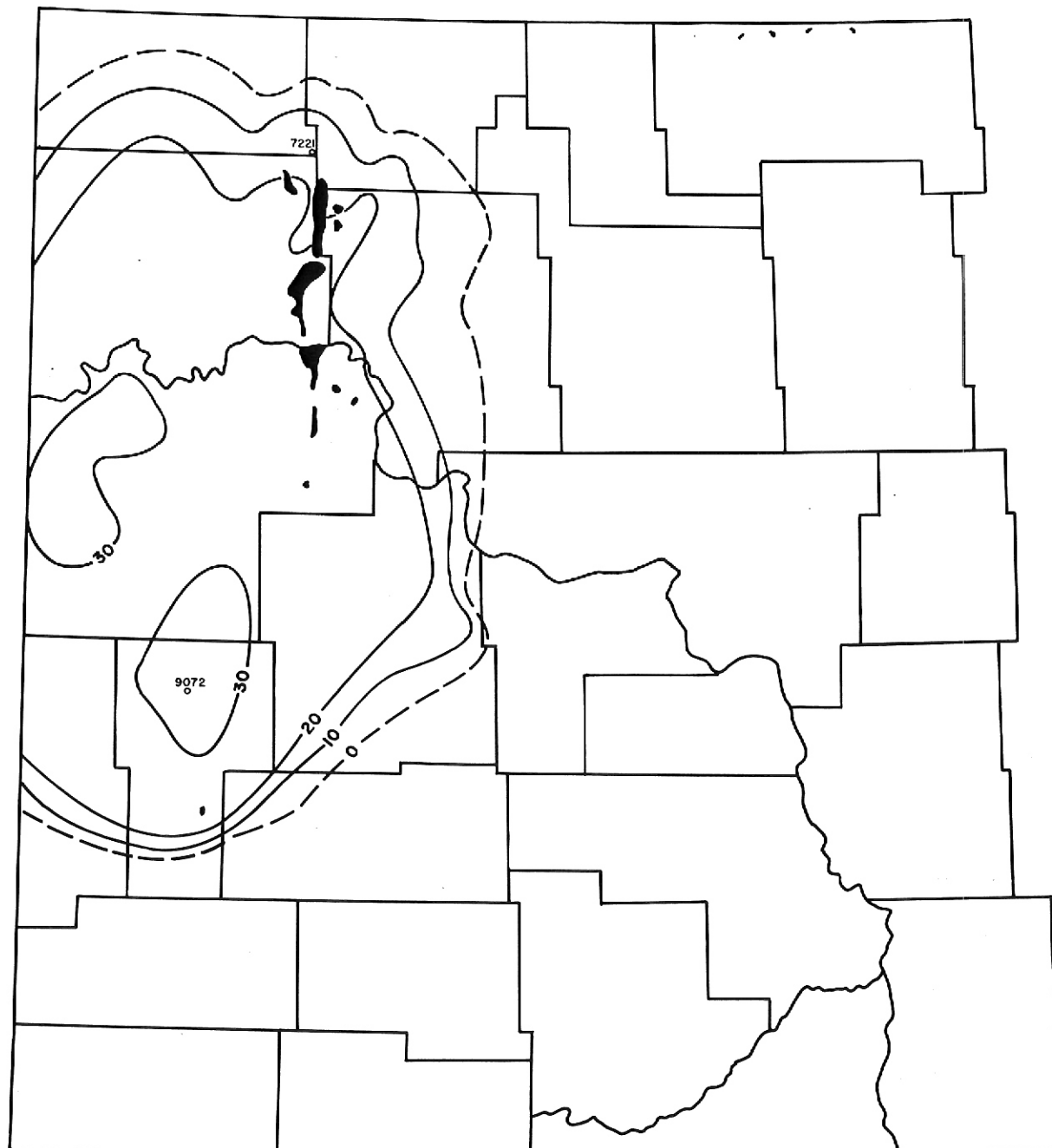
CONTOUR INTERVAL - 50 FEET  
Figure 2 - TRIASSIC "B" SALT



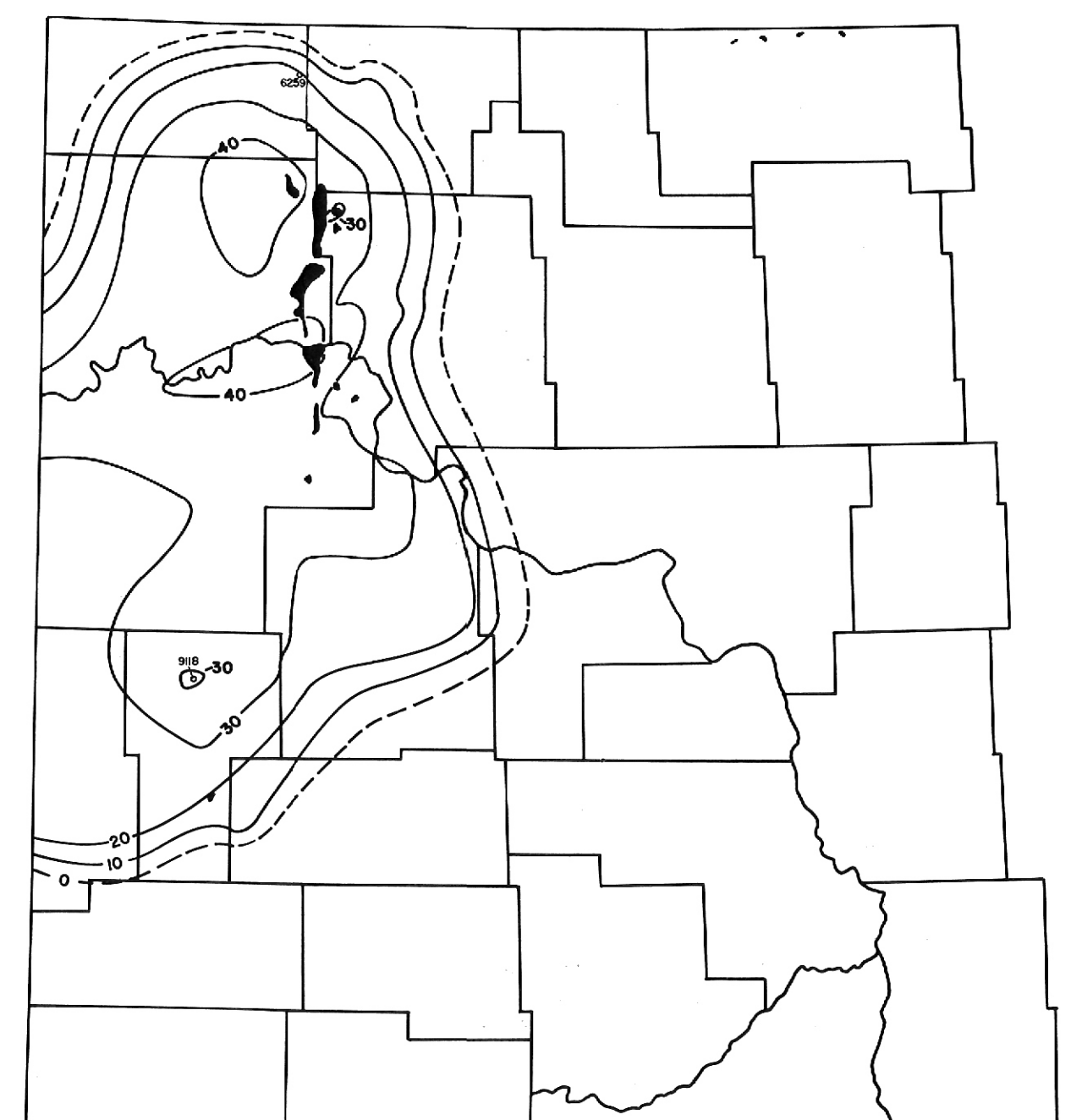
CONTOUR INTERVAL - 50 FEET  
Figure 3 - PERMIAN "A" SALT



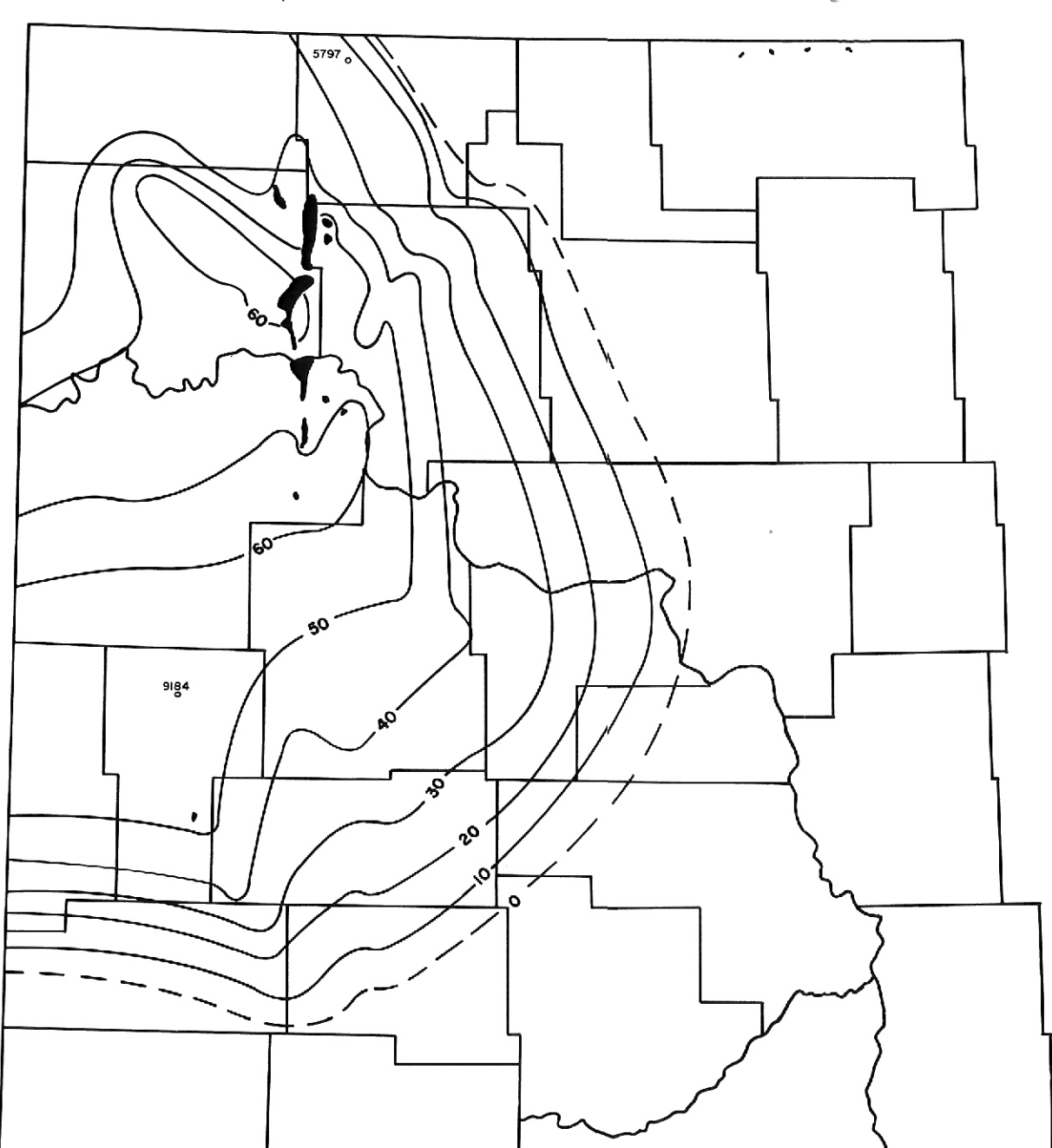
CONTOUR INTERVAL - 50 FEET  
Figure 4 - MISSISSIPPIAN "A" SALT



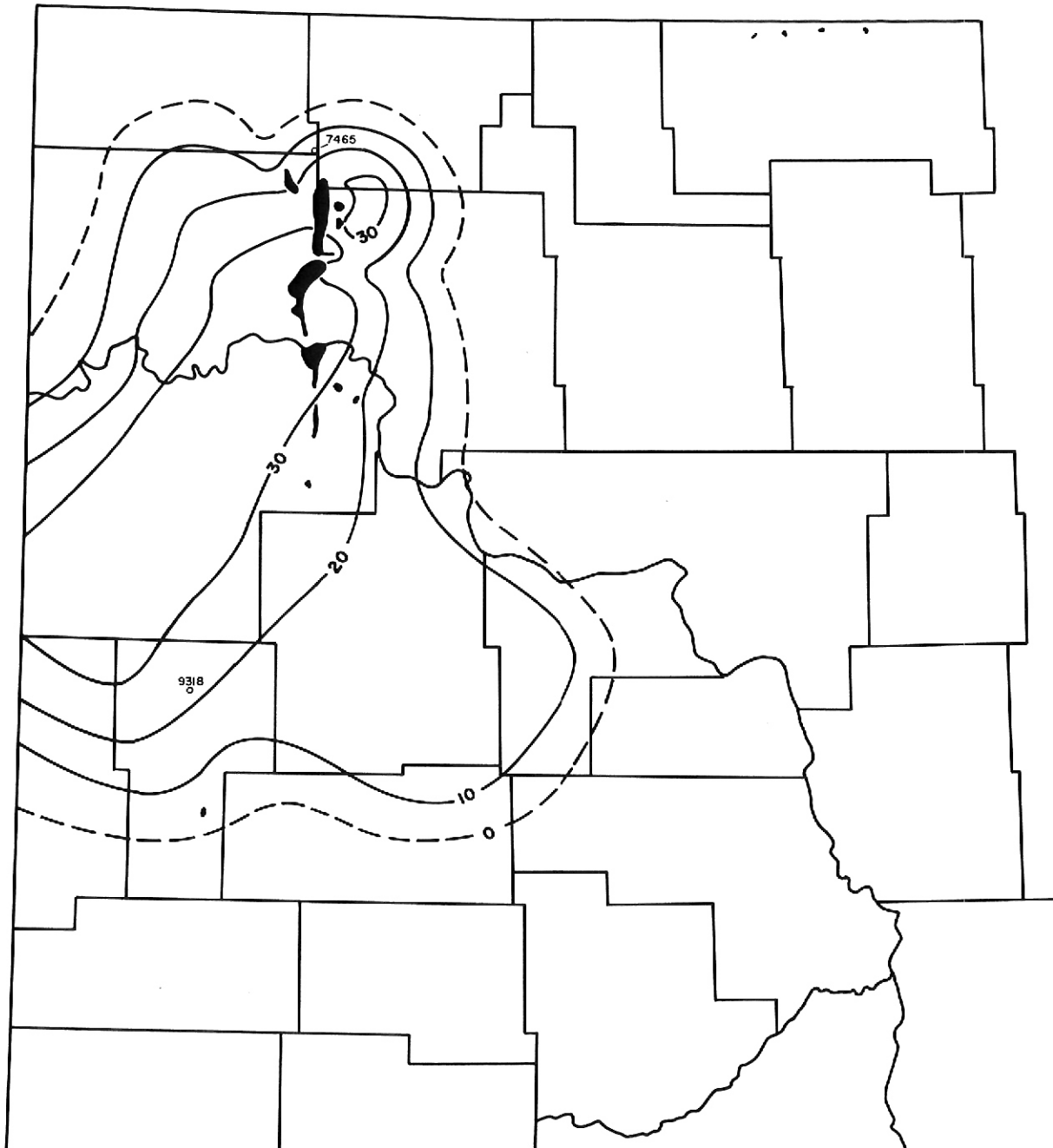
CONTOUR INTERVAL - 10 FEET  
Figure 5 - MISSISSIPPIAN "B" SALT



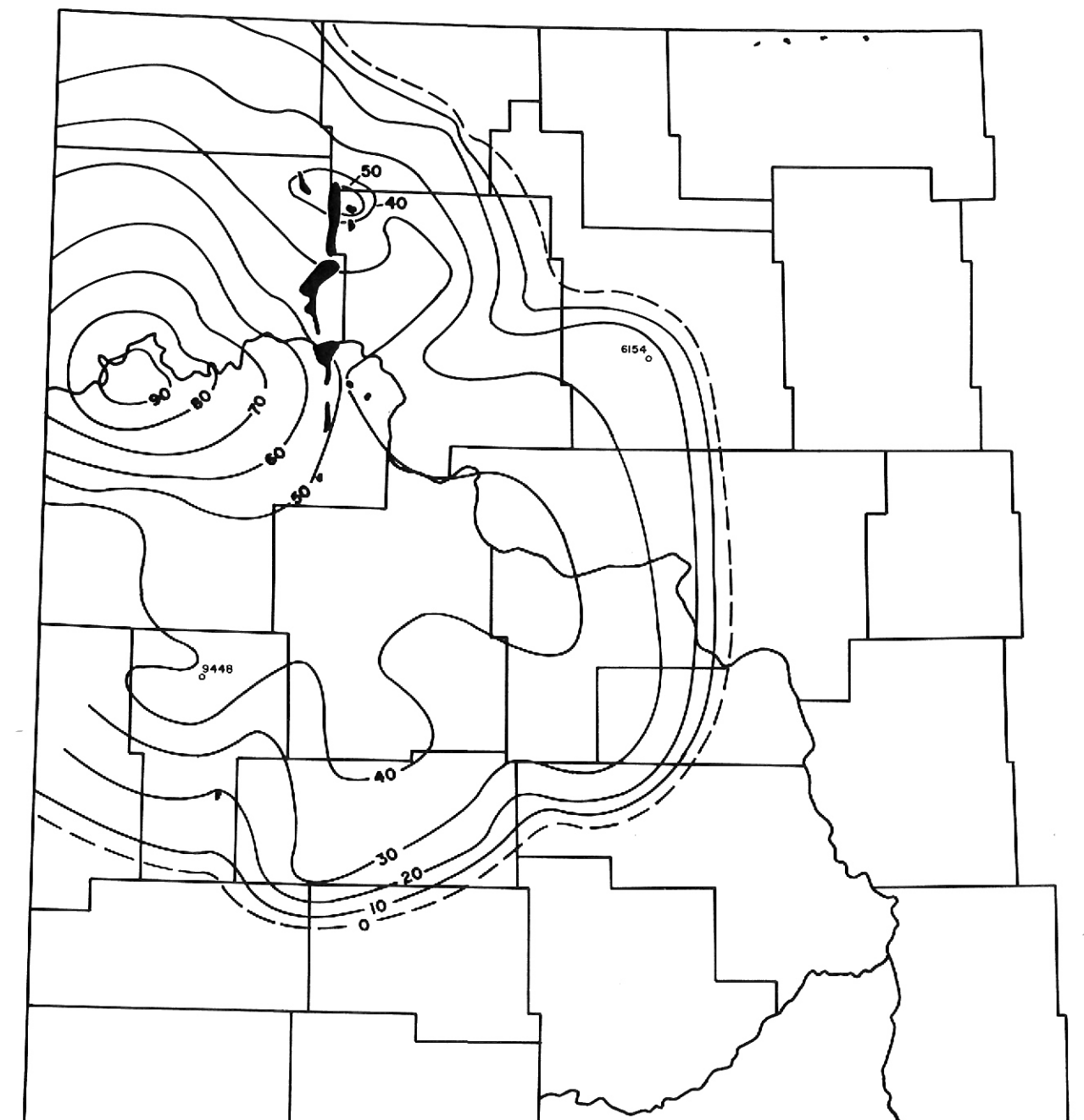
CONTOUR INTERVAL - 10 FEET  
Figure 6 - MISSISSIPPIAN "C" SALT



CONTOUR INTERVAL - 10 FEET  
Figure 7 - MISSISSIPPIAN "D" SALT



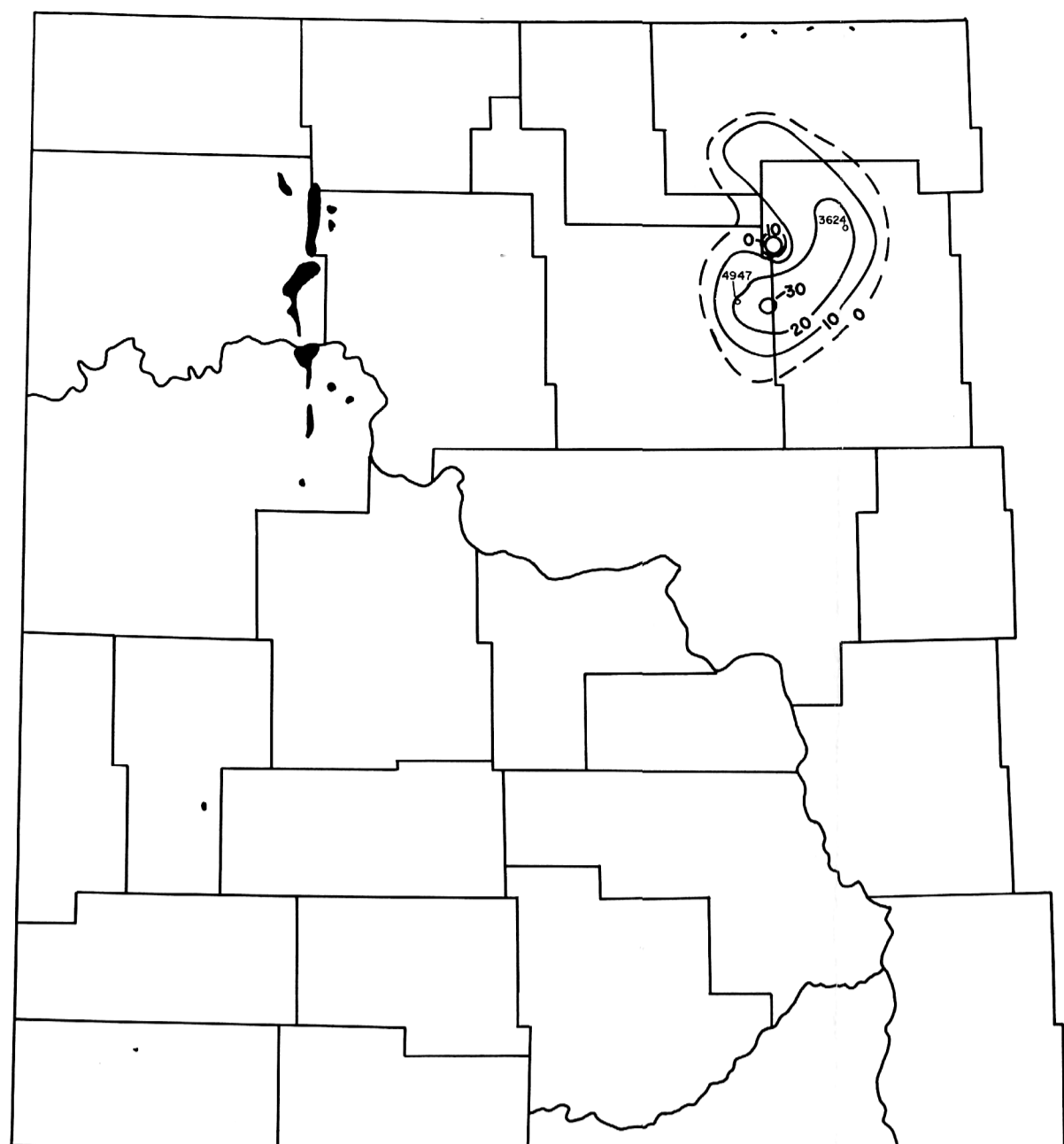
CONTOUR INTERVAL - 10 FEET  
Figure 8 - MISSISSIPPIAN "E" SALT



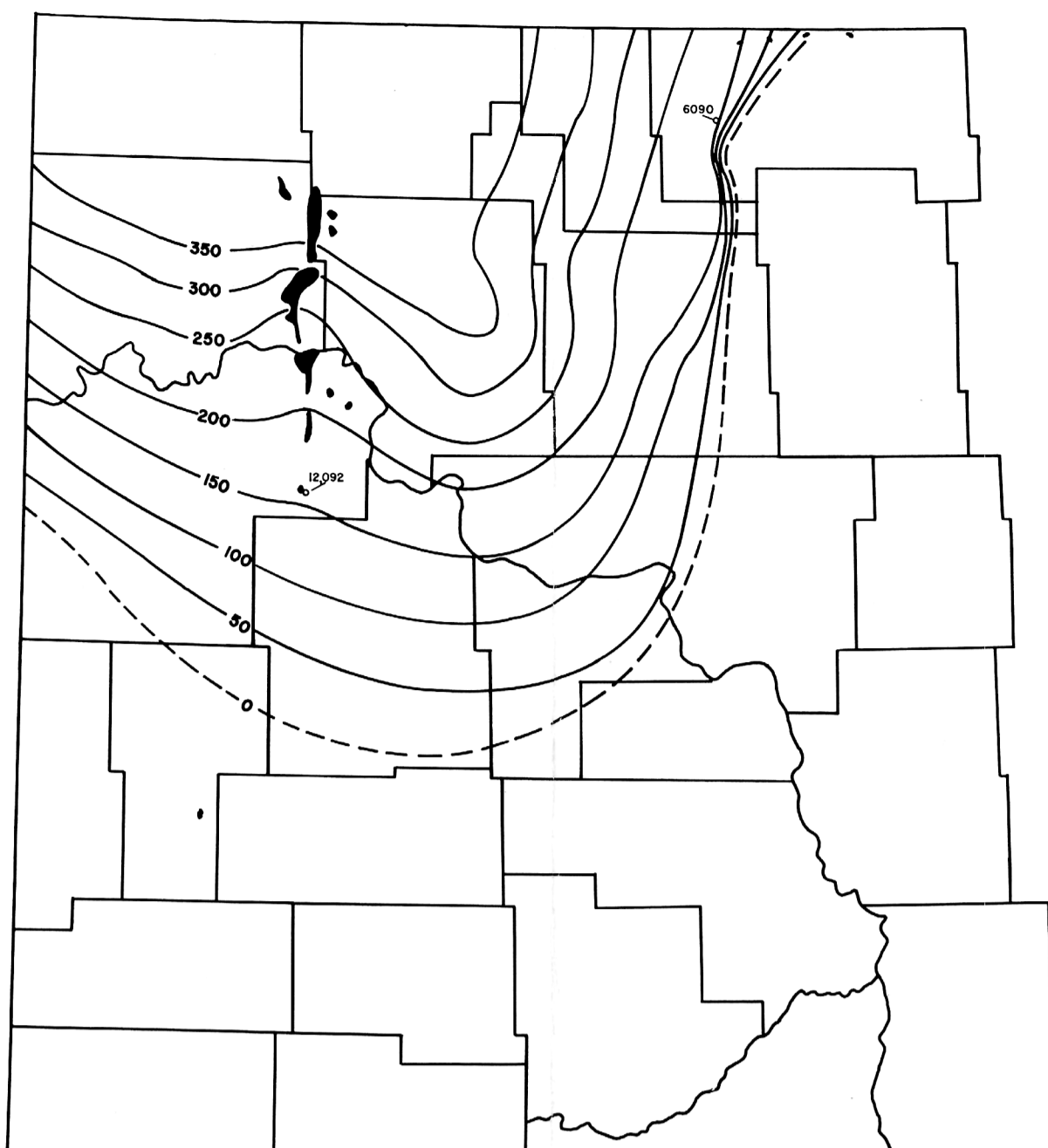
CONTOUR INTERVAL - 10 FEET  
Figure 9 - MISSISSIPPIAN "F" SALT

THICKNESS MAPS OF SALTS IN NORTH DAKOTA

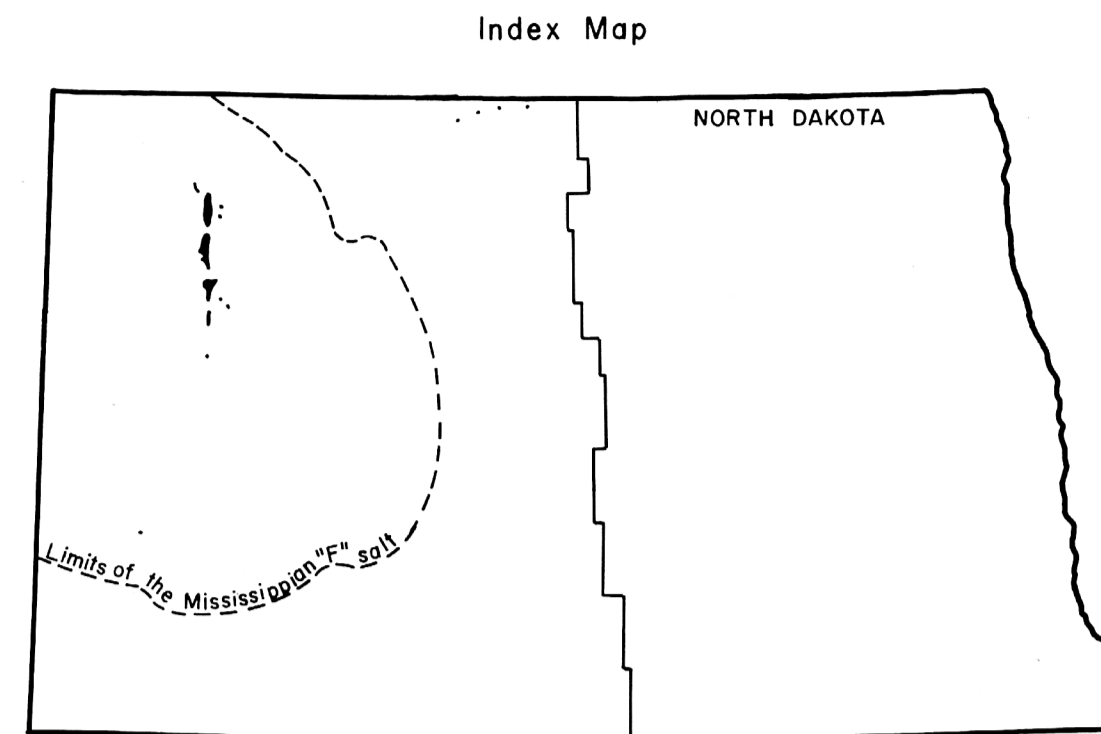
LEGEND



CONTOUR INTERVAL- 10 FEET  
Figure 10- MISSISSIPPIAN "X" SALT



CONTOUR INTERVAL- 50 FEET  
Figure 11- DEVONIAN PRAIRIE EVAPORITE



Explanation

The maps represented on plates 1 and 2 are thickness maps of eleven separate mappable deposits of salt found in North Dakota. The maximum and minimum depths from the surface to the top of the salt are located on the maps. The shaded areas represent the oil fields.

THICKNESS MAPS OF SALTS IN NORTH DAKOTA

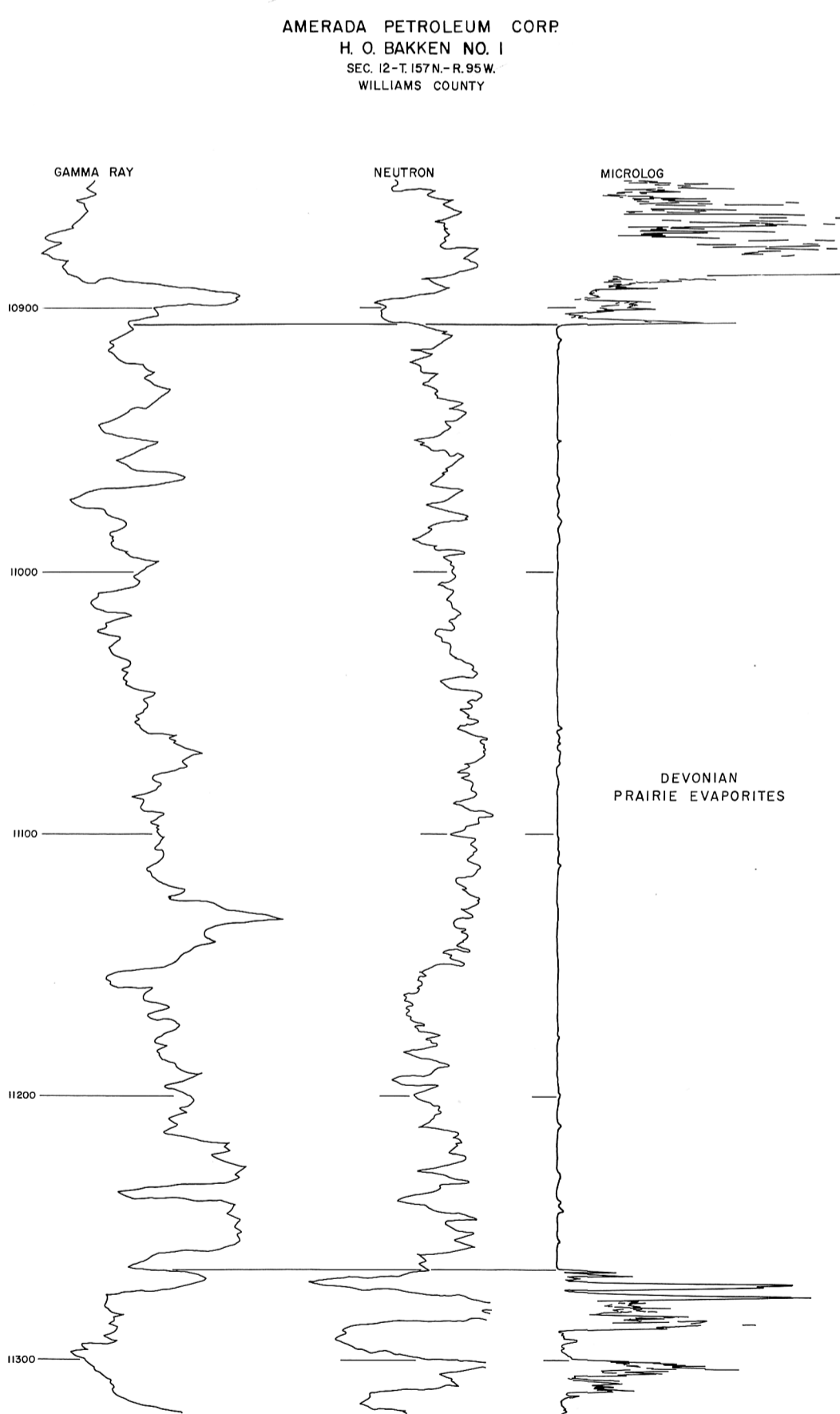


Figure 12

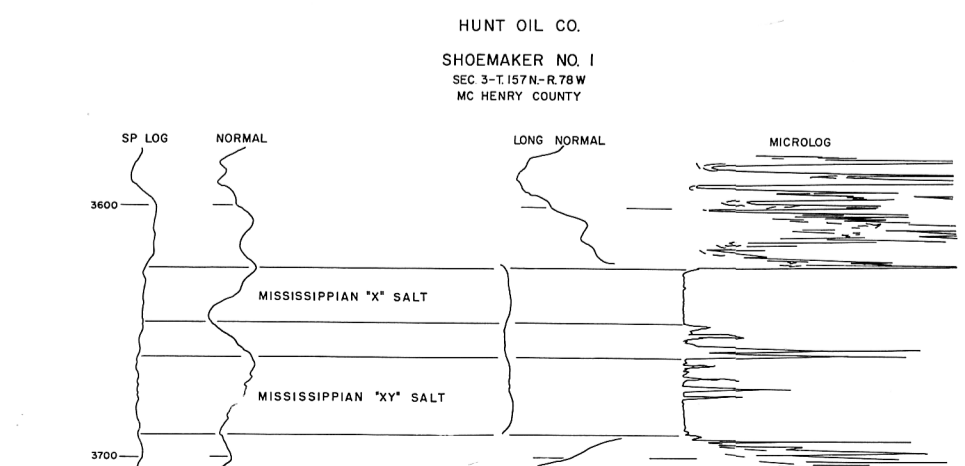


Figure 13

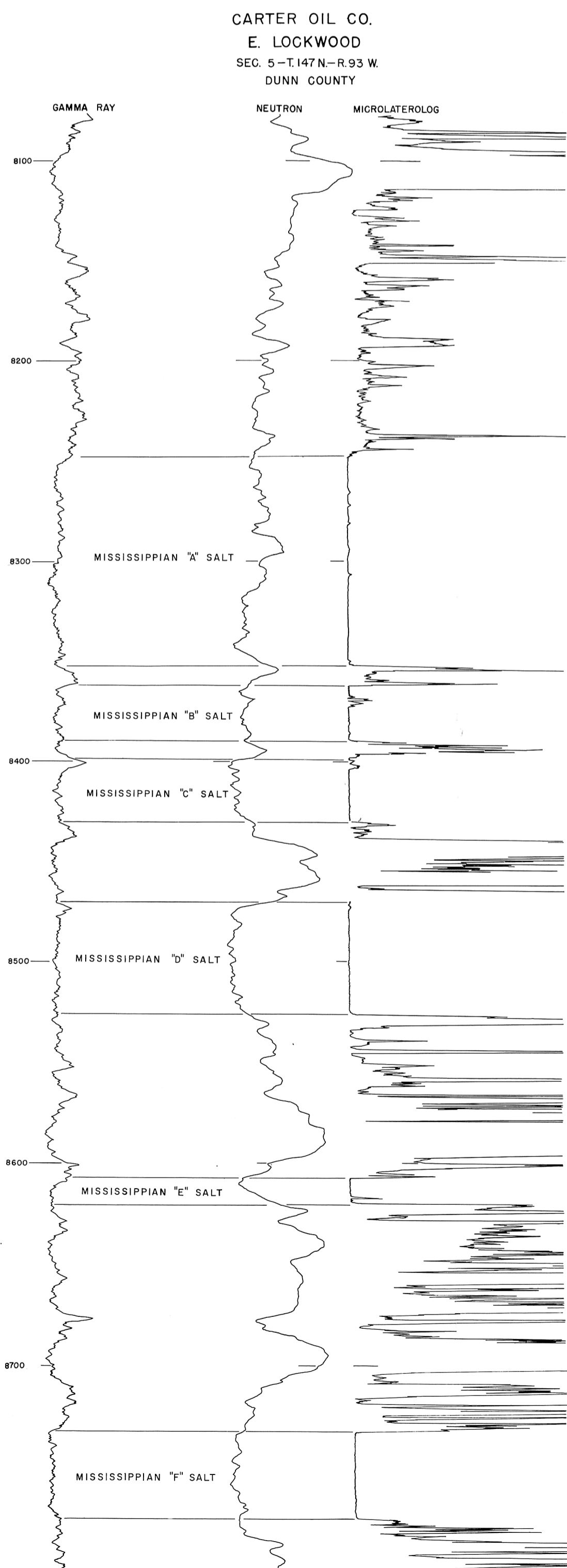


Figure 14

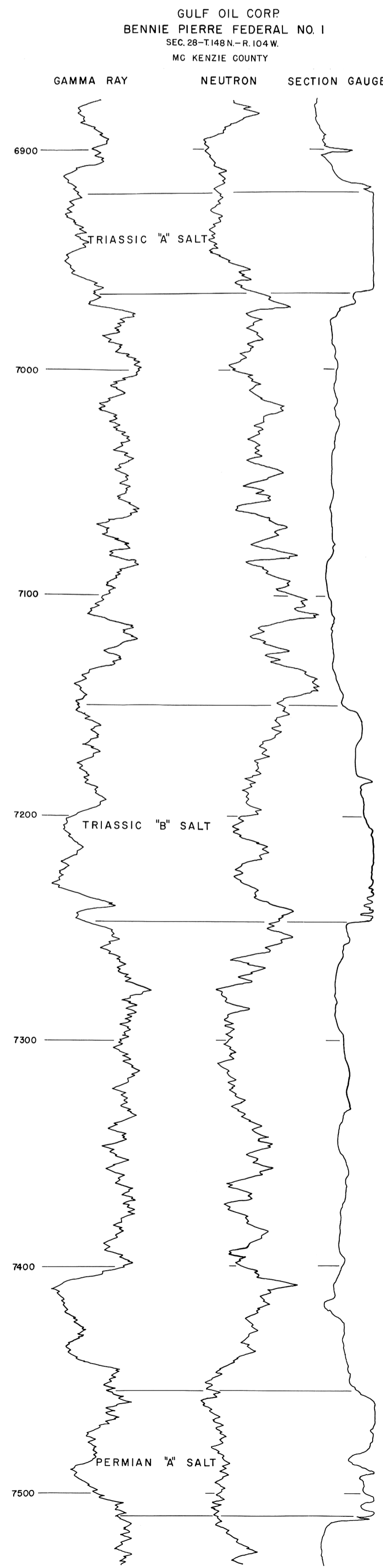


Figure 15

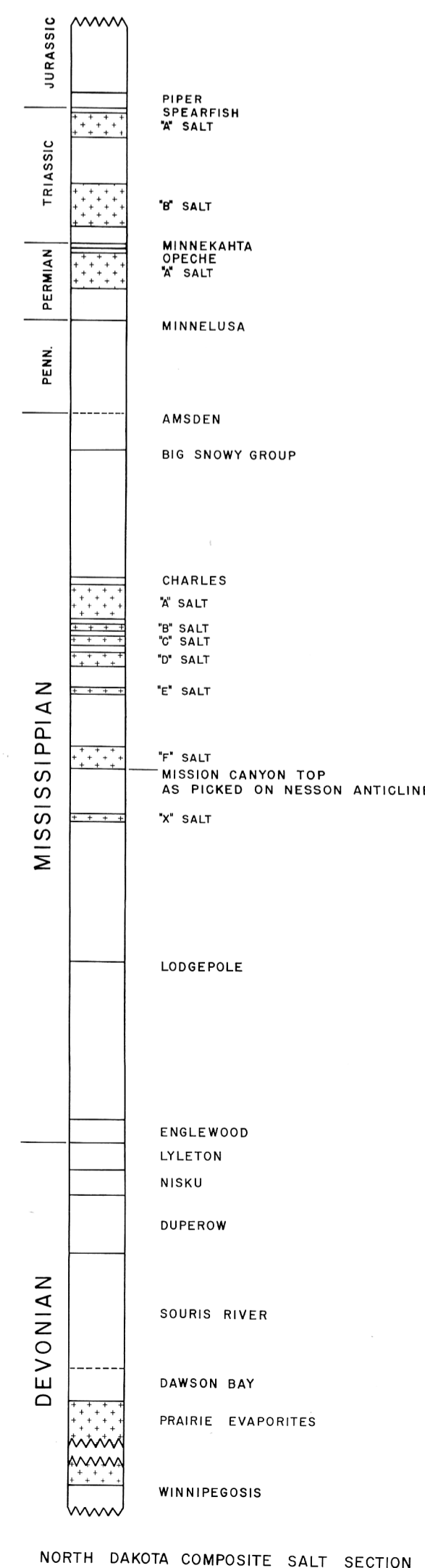


Figure 16