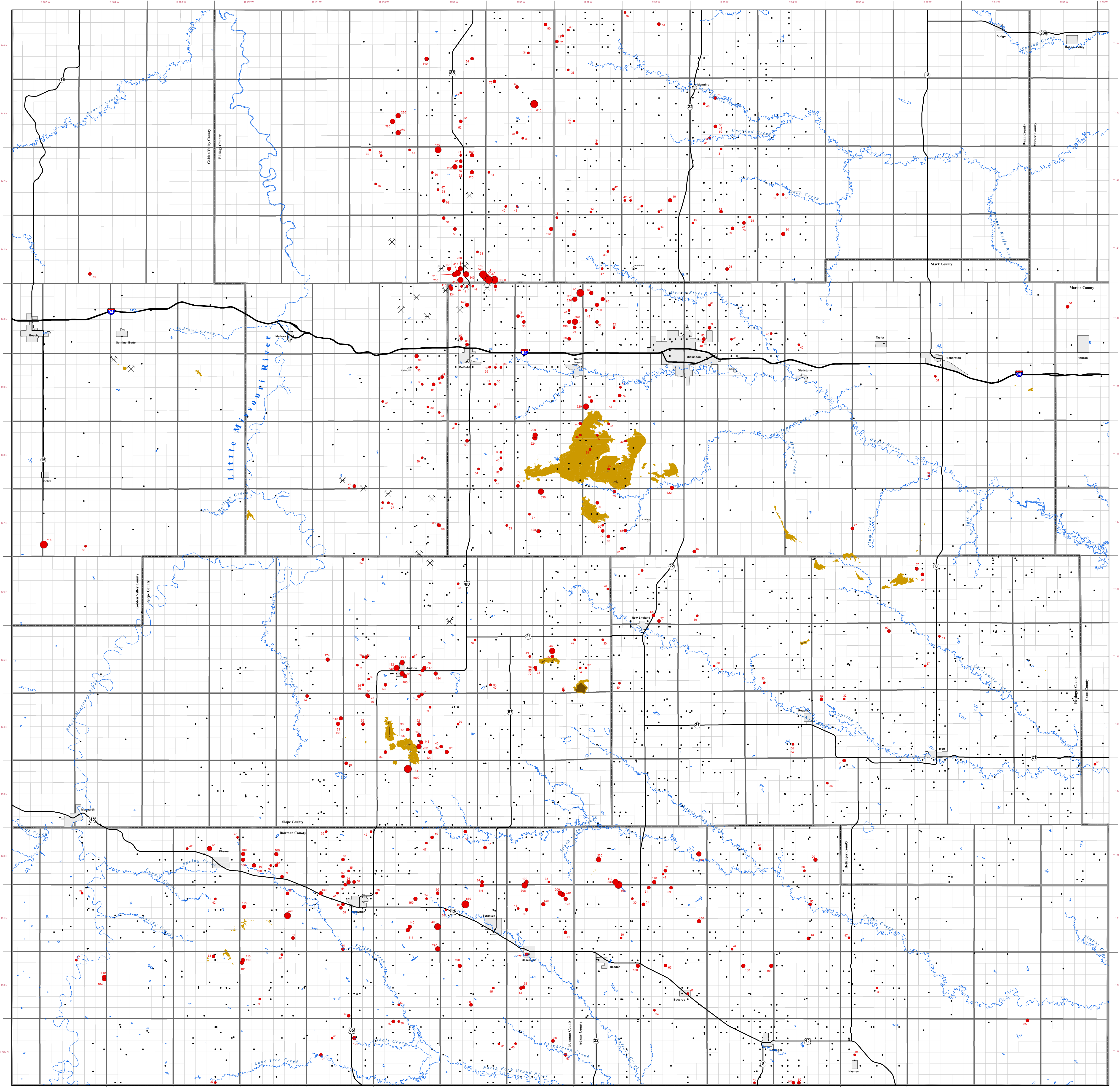
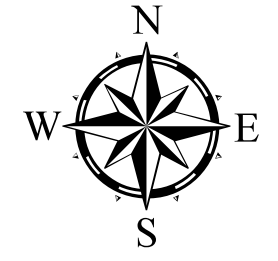




Uranium Concentrations in Groundwater Southwestern North Dakota

Edward C. Murphy
2011



URANIUM CONCENTRATIONS

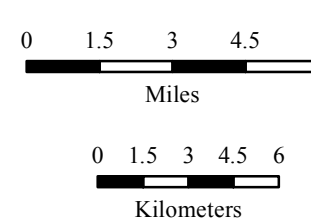
NURE and Bauer & Land (ppb) - Red Text

- 0 - <30
- 30 - <50
- 50 - <100
- 100 - <200
- 200 - <300
- 300 - <400
- 400 - <500
- ≥500

SURFACE GEOLOGY

- ARIKAREE FORMATION
- WHITE RIVER GROUP
- GEOLOGY UNDIFFERENTIATED
- ⊗ Approximate Location of Abandoned Uranium Mine

Scale 1:250,000



Mercaator Projection
1927 North American Datum
Standard Parallel 46° 00' 00"
Central Meridian 103° 00' 00"

The Bauer and Land Company collected groundwater samples for uranium analysis from almost 3,500 private domestic wells and stock wells in southwestern North Dakota between October 1975 and June 1978. The uranium detection limit was 2 ppb. The National Uranium Resource Evaluation program (NURE) collected 545 groundwater samples from southwestern North Dakota during the summer of 1979, sampling several of the same wells that Bauer and Land had sampled. The uranium detection limit for the NURE program was <1 ppb.

MISC SYMBOLS

- County Boundary
- Township Boundary
- Section Boundary
- City Boundary
- Town
- Interstate Highway
- US Highway
- State Highway