



# **MONTHLY UPDATE**

## **JULY 2024 PRODUCTION & TRANSPORTATION**

Published: July 16, 2024

Justin J. Kringstad, Director

North Dakota Pipeline Authority

Office: 701.220.6227

[www.northdakotapipelines.com](http://www.northdakotapipelines.com)

# MONTHLY UPDATE

## JULY 2024 PRODUCTION & TRANSPORTATION

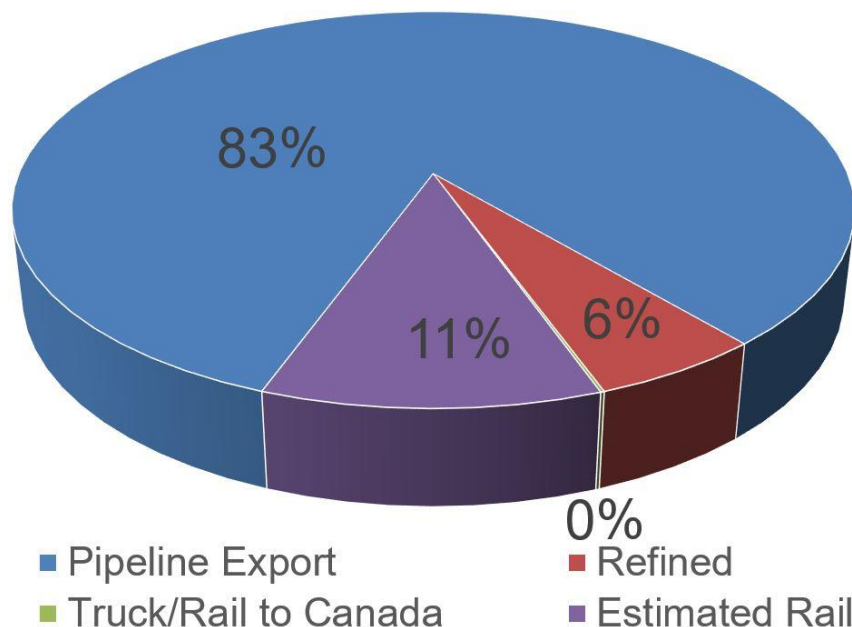
### North Dakota Oil Production

Month	Monthly Total, BBL	Average, BOPD
Apr. 2024 - Final	37,310,344	1,243,678
May 2024 - Prelim.	37,048,725	1,195,120

### North Dakota Natural Gas Production

Month	Monthly Total, MCF	Average, MCFD
Apr. 2024 - Final	104,495,171	3,483,172
May 2024 - Prelim.	108,737,983	3,507,677

### Estimated Williston Basin Oil Transportation, May 2024



## CURRENT DRILLING ACTIVITY:

### NORTH DAKOTA<sup>1</sup>

39 Rigs

### EASTERN MONTANA<sup>2</sup>

1 Rigs

### SOUTH DAKOTA<sup>2</sup>

0 Rigs

### SOURCE (JULY 16, 2024):

1. ND Oil & Gas Division
2. Baker Hughes

## PRICES:

Crude (WTI): \$81.00

Crude (Brent): \$84.08

NYMEX Gas: \$2.21

SOURCE: BLOOMBERG  
(JULY 16, 2024 11AM EST)

## GAS STATS\*

95% CAPTURED & SOLD

4% FLARED DUE TO  
CHALLENGES OR  
CONSTRAINTS ON EXISTING  
GATHERING SYSTEMS

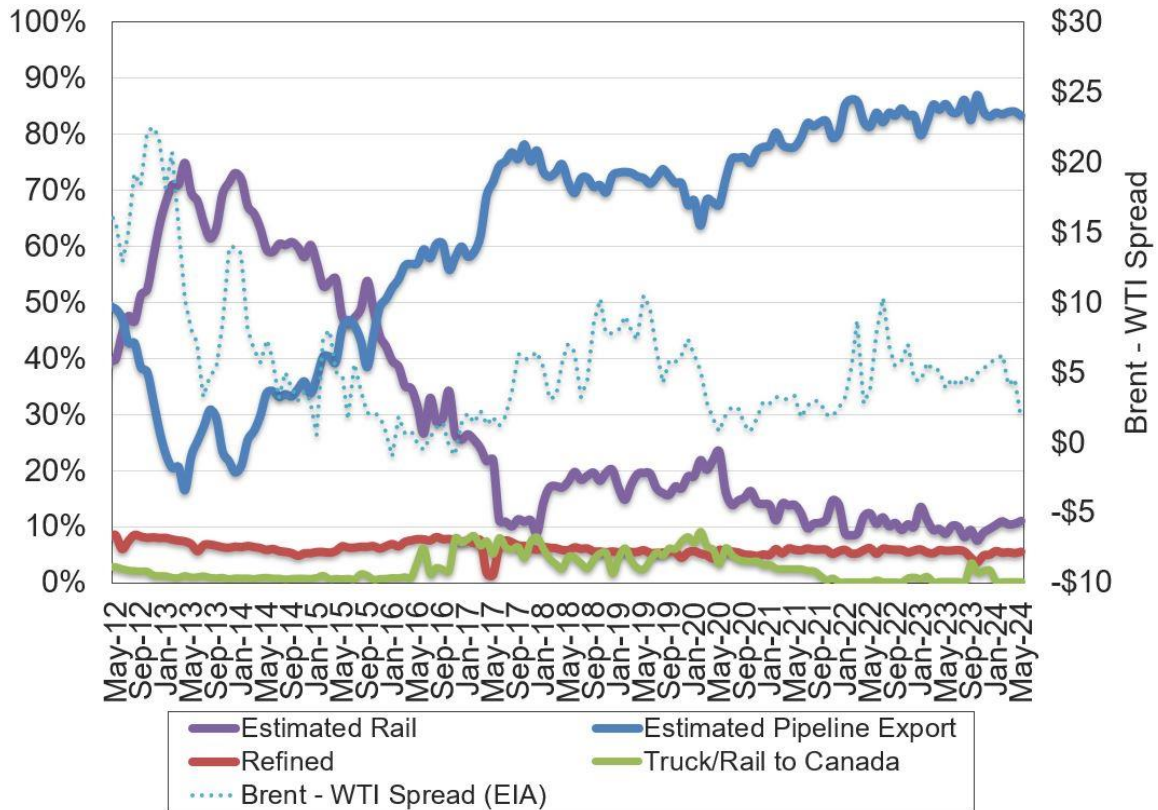
1% FLARED FROM WELL  
WITH ZERO SALES

\*MAY 2024 NON-CONF DATA

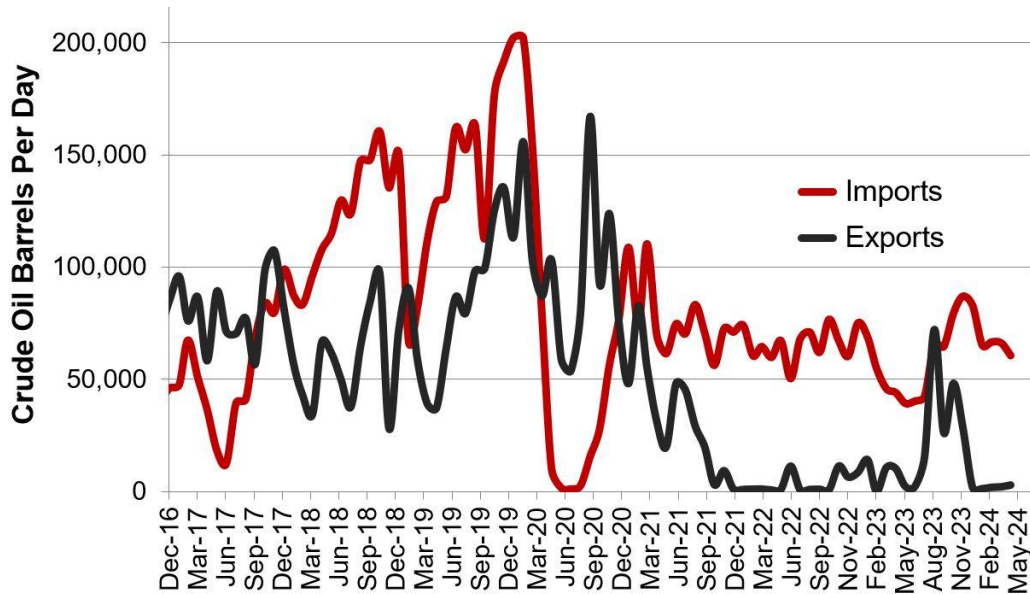
## Estimated North Dakota Rail Export Volumes



## Estimated Williston Basin Oil Transportation

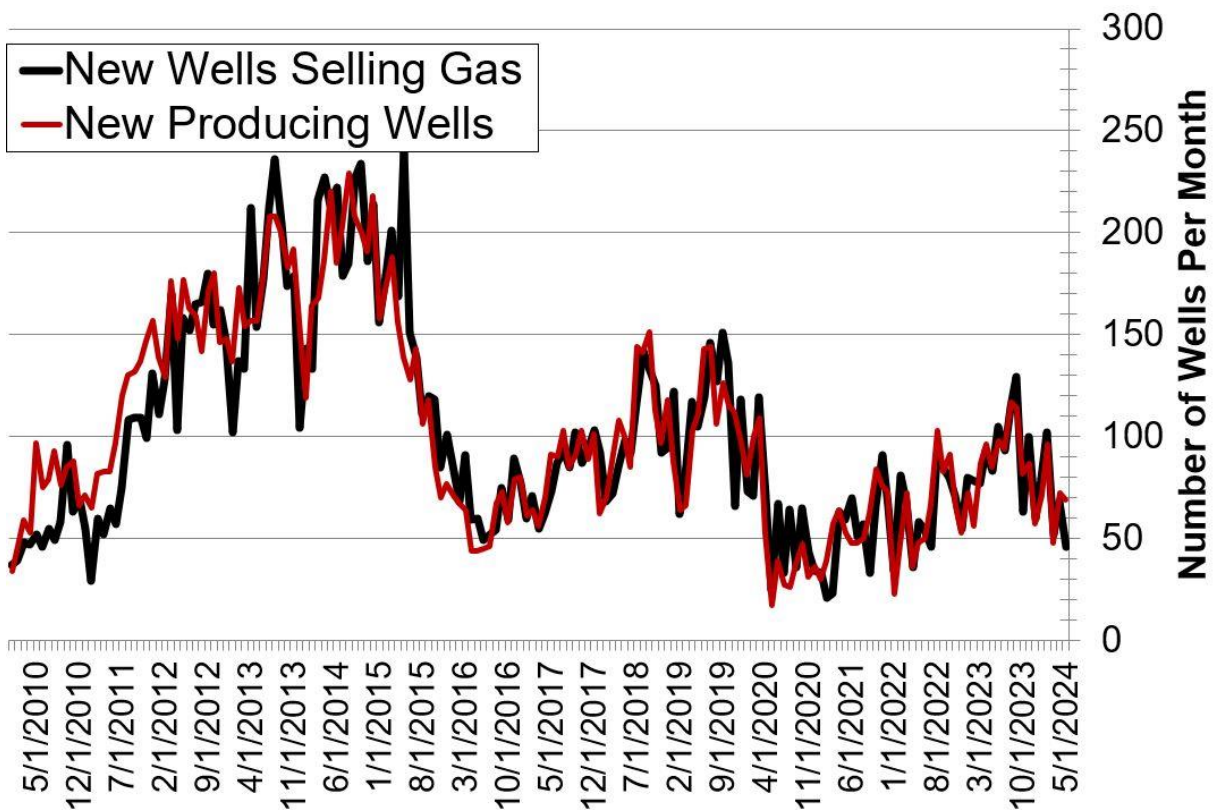


## Williston Basin Truck/Rail Imports and Exports with Canada



Data for imports/exports chart is provided by the US International Trade Commission and represents traffic across US/Canada border in the Williston Basin area.

## New Gas Sales Wells per Month



## US Williston Basin Oil Production, BOPD

### 2023

MONTH	ND	EASTERN MT*	SD	TOTAL
January	1,062,924	62,114	2,610	1,127,648
February	1,158,988	63,558	2,475	1,225,021
March	1,124,917	64,596	2,652	1,192,165
April	1,135,872	61,956	2,557	1,200,385
May	1,140,253	61,310	2,560	1,204,123
June	1,174,603	59,744	2,275	1,236,621
July	1,187,084	56,986	2,311	1,246,381
August	1,219,832	62,383	2,540	1,284,756
September	1,290,356	62,815	2,504	1,355,675
October	1,255,517	62,611	2,452	1,320,579
November	1,279,103	63,090	2,448	1,344,642
December	1,275,004	63,272	2,496	1,340,772

### 2024

MONTH	ND	EASTERN MT*	SD	TOTAL
January	1,105,424	59,194	2,312	1,166,930
February	1,252,501	66,037	2,411	1,320,949
March	1,229,540	69,796	2,589	1,301,925
April	1,243,678	70,196		
May	1,195,120			
June				
July				
August				
September				
October				
November				
December				

\* Eastern Montana production composed of the following Counties: Carter, Daniels, Dawson, Fallon, McCone, Powder River, Prairie, Richland, Roosevelt, Sheridan, Valley, Wibaux