



MONTHLY UPDATE

OCTOBER 2024 PRODUCTION & TRANSPORTATION

Published: October 17, 2024
Justin J. Kringstad, Director
North Dakota Pipeline Authority
Office: 701.220.6227
www.northdakotapipelines.com

MONTHLY UPDATE

OCTOBER 2024 PRODUCTION & TRANSPORTATION

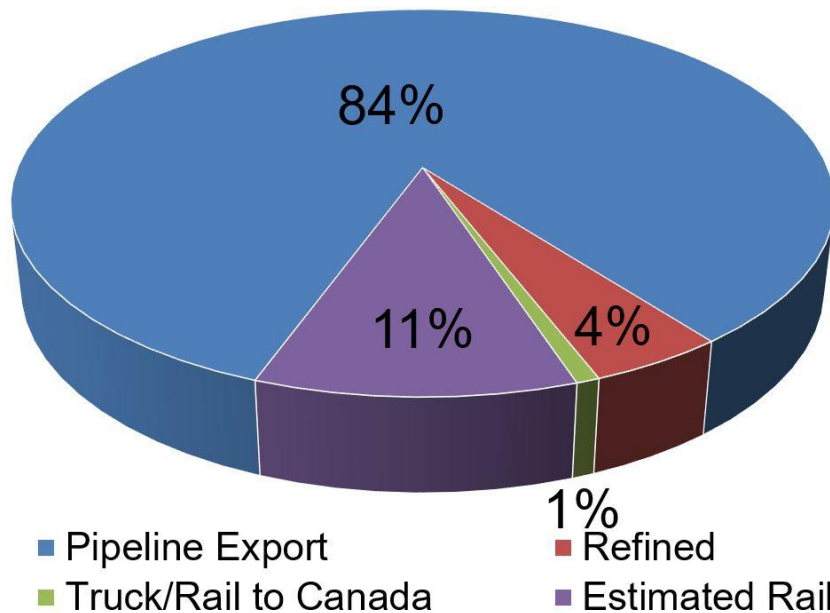
North Dakota Oil Production

Month	Monthly Total, BBL	Average, BOPD
July 2024 - Final	36,254,457	1,169,499
Aug. 2024 - Prelim.	36,553,064	1,179,131

North Dakota Natural Gas Production

Month	Monthly Total, MCF	Average, MCFD
July 2024 - Final	107,348,670	3,462,860
Aug. 2024 - Prelim.	109,341,748	3,527,153

Estimated Williston Basin Oil Transportation, Aug. 2024



CURRENT DRILLING ACTIVITY:

NORTH DAKOTA¹

38 Rigs

EASTERN MONTANA²

1 Rigs

SOUTH DAKOTA²

0 Rigs

SOURCE (OCT 17, 2024):

1. ND Oil & Gas Division
2. Baker Hughes

PRICES:

Crude (WTI): \$70.26

Crude (Brent): \$74.05

NYMEX Gas: \$2.38

SOURCE: BLOOMBERG
(OCT 17, 2024 9:30AM EST)

GAS STATS*

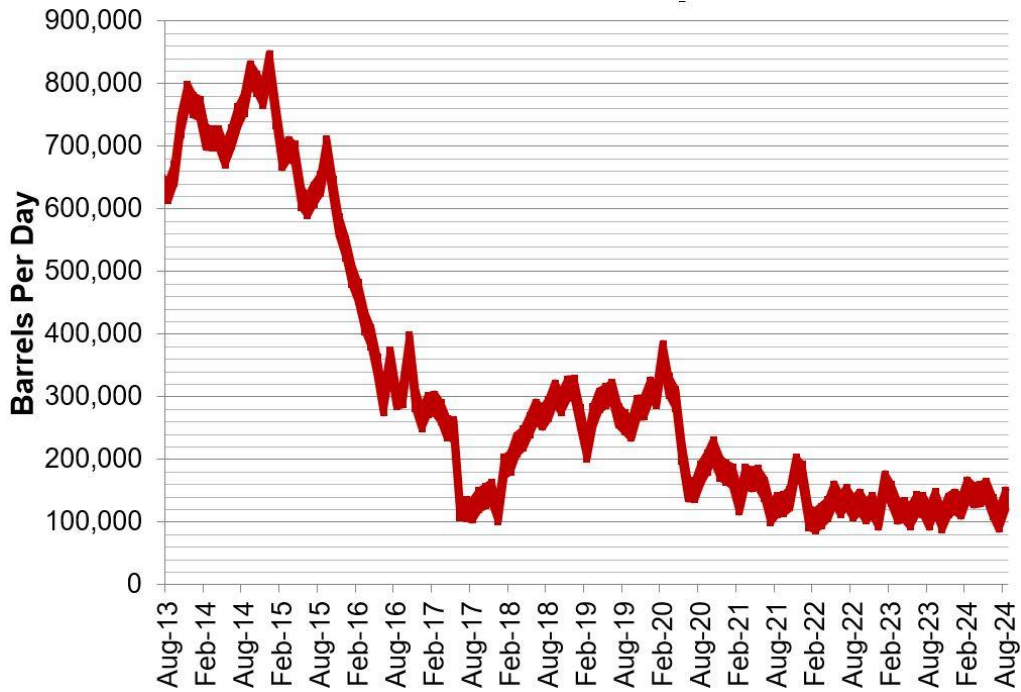
95% CAPTURED & SOLD

4% FLARED DUE TO
CHALLENGES OR
CONSTRAINTS ON EXISTING
GATHERING SYSTEMS

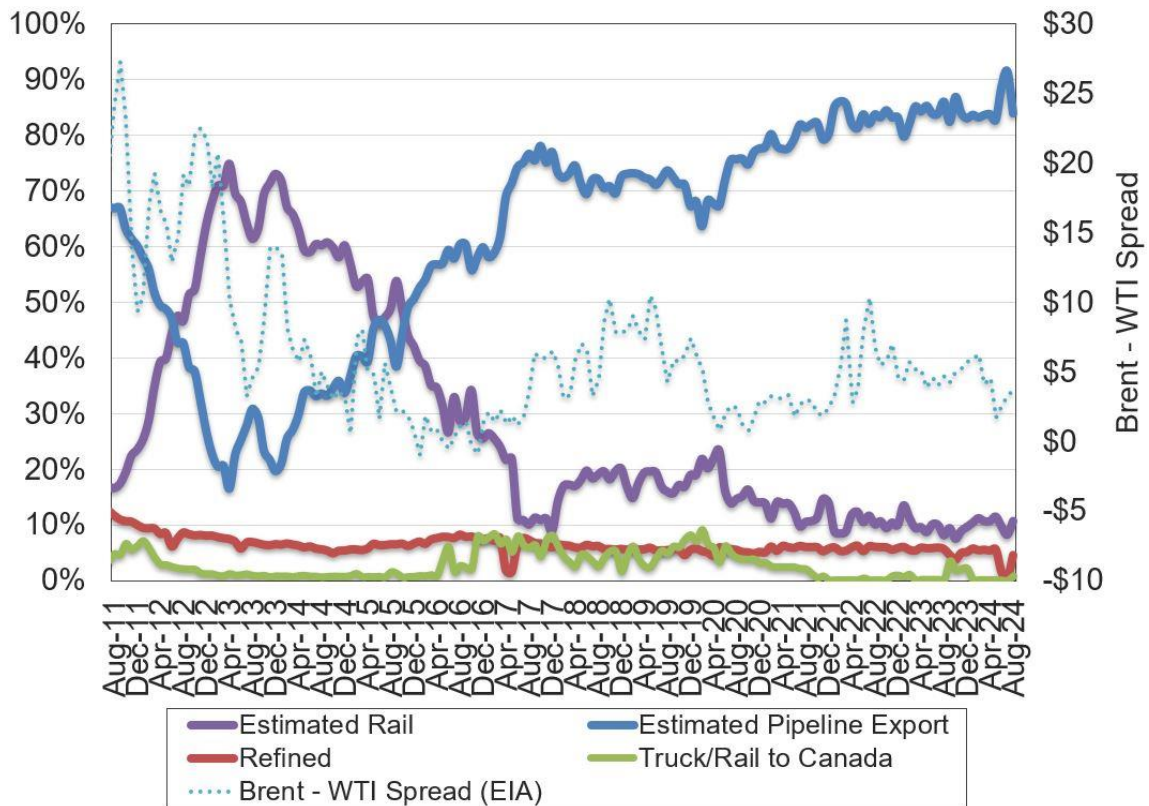
1% FLARED FROM WELL
WITH ZERO SALES

*AUG 2024 NON-CONF DATA

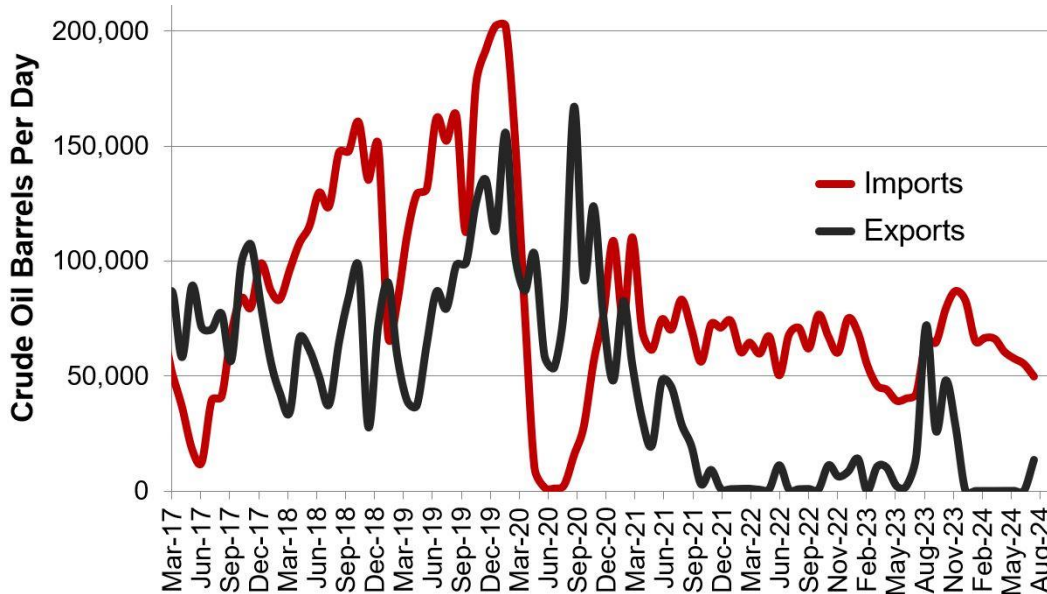
Estimated North Dakota Rail Export Volumes



Estimated Williston Basin Oil Transportation

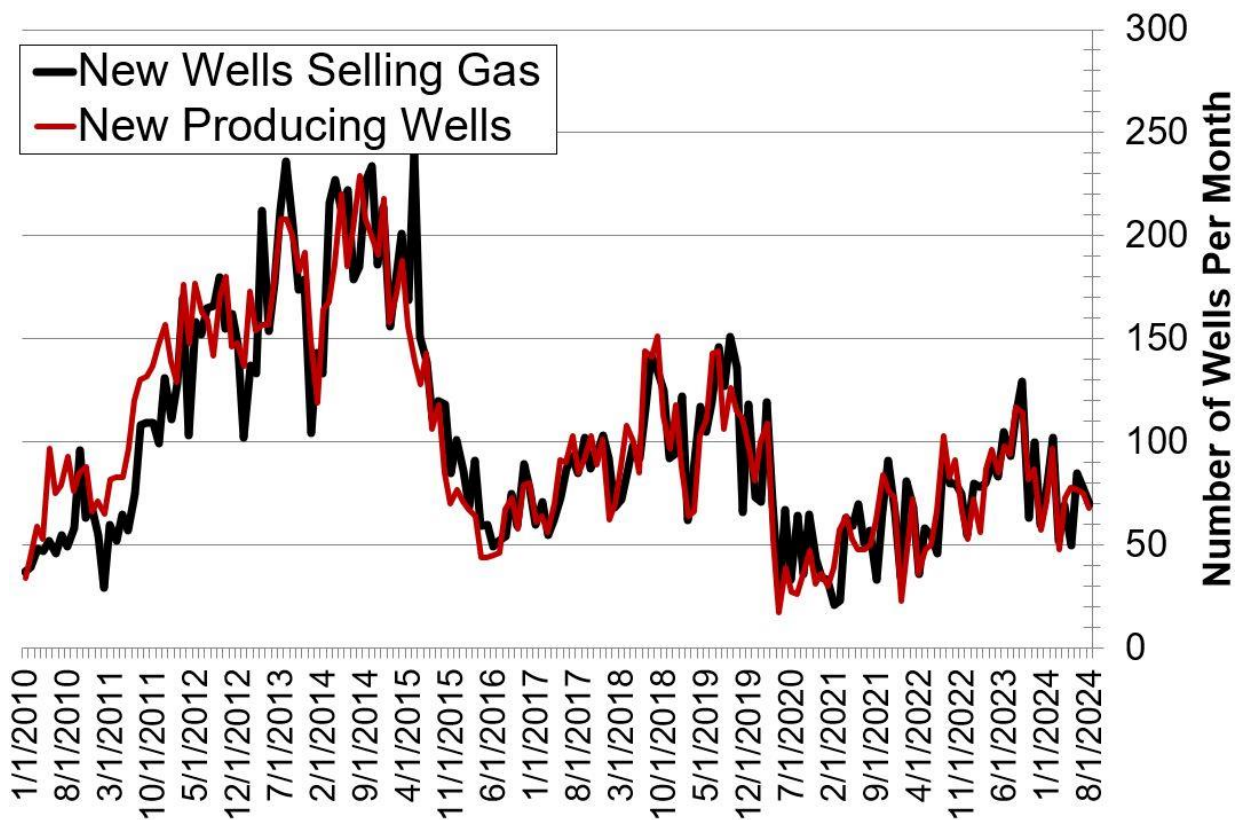


Williston Basin Truck/Rail Imports and Exports with Canada



Data for imports/exports chart is provided by the US International Trade Commission and represents traffic across US/Canada border in the Williston Basin area.

New Gas Sales Wells per Month



US Williston Basin Oil Production, BOPD

2023

MONTH	ND	EASTERN MT*	SD	TOTAL
January	1,062,924	62,114	2,610	1,127,648
February	1,158,988	63,559	2,475	1,225,021
March	1,124,917	64,596	2,652	1,192,165
April	1,135,872	61,956	2,557	1,200,385
May	1,140,253	61,310	2,560	1,204,123
June	1,174,603	59,744	2,275	1,236,621
July	1,187,084	56,994	2,311	1,246,388
August	1,219,832	62,412	2,540	1,284,784
September	1,290,356	62,829	2,504	1,355,689
October	1,255,517	62,674	2,452	1,320,642
November	1,279,103	63,120	2,448	1,344,671
December	1,275,004	63,288	2,496	1,340,788

2024

MONTH	ND	EASTERN MT*	SD	TOTAL
January	1,106,526	59,255	2,312	1,168,092
February	1,256,157	66,329	2,412	1,324,898
March	1,232,640	70,658	2,590	1,305,888
April	1,244,277	72,257	2,430	1,318,964
May	1,199,645	72,515	2,349	1,274,509
June	1,186,394	71,481	2,370	1,260,245
July	1,169,499	68,597	2,329	1,240,424
August	1,179,131			
September				
October				
November				
December				

* Eastern Montana production composed of the following Counties: Carter, Daniels, Dawson, Fallon, McCone, Powder River, Prairie, Richland, Roosevelt, Sheridan, Valley, Wibaux