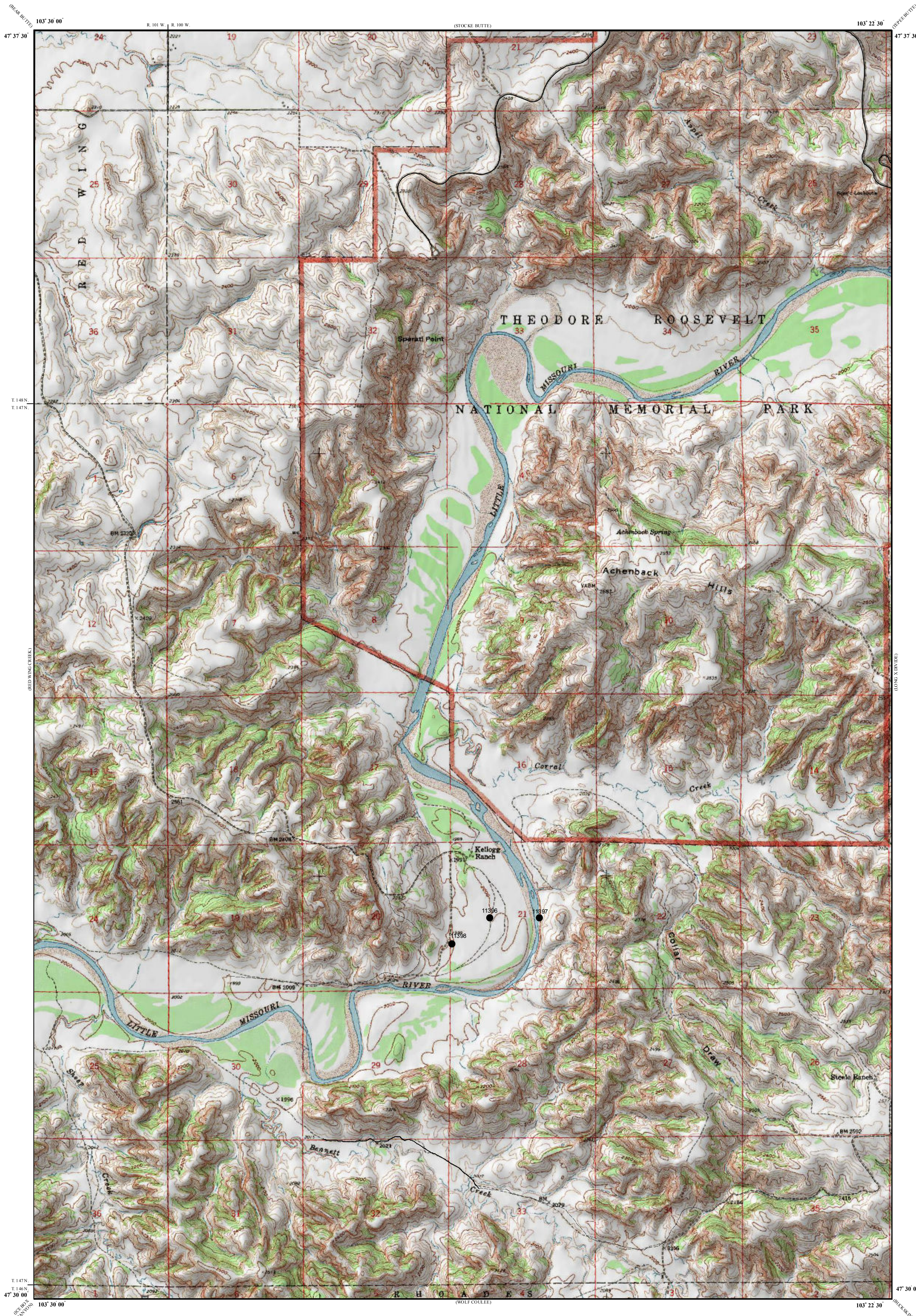


Lignite Reserves

Sperati Point Quadrangle, North Dakota

Edward C. Murphy
2008



UNIT DESCRIPTIONS

GU Geology Undifferentiated

I Economic Coal Deposits

Economic coal deposits are those that meet the minimum criteria established by coal companies operating surface mines in North Dakota. These economic criteria include a minimum cumulative coal thickness of ten feet—typically occurring in less than two beds, a minimum individual bed thickness of at least 2.5 feet, a ratio of overburden to coal thickness of not more than 10:1, a minimum of 25 feet of overburden, and a maximum depth to coal of approximately 150 feet.

Geologic Symbols

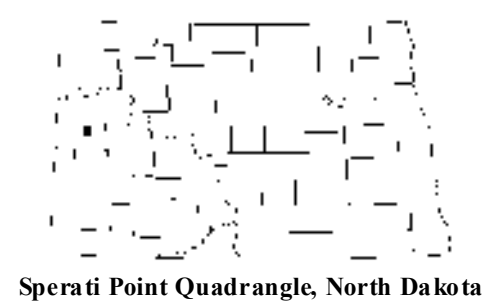
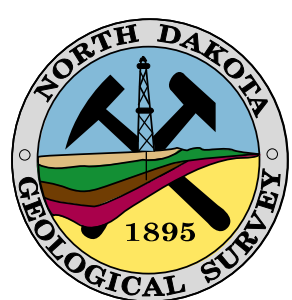
— Extent of Local Lignite Reserves

● Data Points
Includes coal exploration NDGS/USGS drill holes, sub-surface mineral drill holes, oil & gas wells, and NDSWC drill holes.

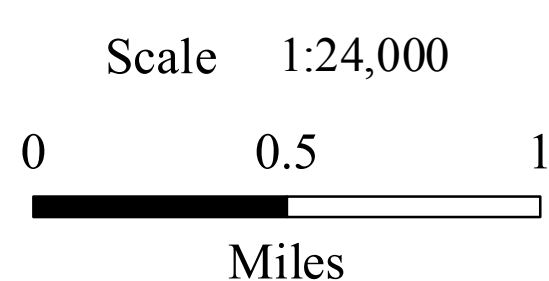
● 11396
● 11397
● 11398
● 11399
● 11400
● 11401
● 11402
● 11403
● 11404
● 11405
● 11406
● 11407
● 11408
● 11409
● 11410
● 11411
● 11412
● 11413
● 11414
● 11415
● 11416
● 11417
● 11418
● 11419
● 11420
● 11421
● 11422
● 11423
● 11424
● 11425
● 11426
● 11427
● 11428
● 11429
● 11430
● 11431
● 11432
● 11433
● 11434
● 11435
● 11436
● 11437
● 11438
● 11439
● 11440
● 11441
● 11442
● 11443
● 11444
● 11445
● 11446
● 11447
● 11448
● 11449
● 11450
● 11451
● 11452
● 11453
● 11454
● 11455
● 11456
● 11457
● 11458
● 11459
● 11460
● 11461
● 11462
● 11463
● 11464
● 11465
● 11466
● 11467
● 11468
● 11469
● 11470
● 11471
● 11472
● 11473
● 11474
● 11475
● 11476
● 11477
● 11478
● 11479
● 11480
● 11481
● 11482
● 11483
● 11484
● 11485
● 11486
● 11487
● 11488
● 11489
● 11490
● 11491
● 11492
● 11493
● 11494
● 11495
● 11496
● 11497
● 11498
● 11499
● 11500

Other Features

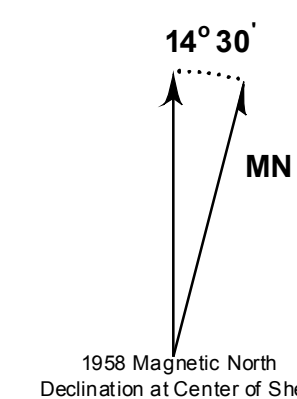
— Paved Road
- - - Unpaved Road



Sperati Point Quadrangle, North Dakota



Lambert Conformal Conic Projection Standard Parallels 47° 30' 00" and 47° 37' 30"
1927 North American Datum NGVD 1929
USGS 7.5 Minute Topographic Map - Contour Interval 20 Feet



1958 Magnetic North Declination at Center of Sheet