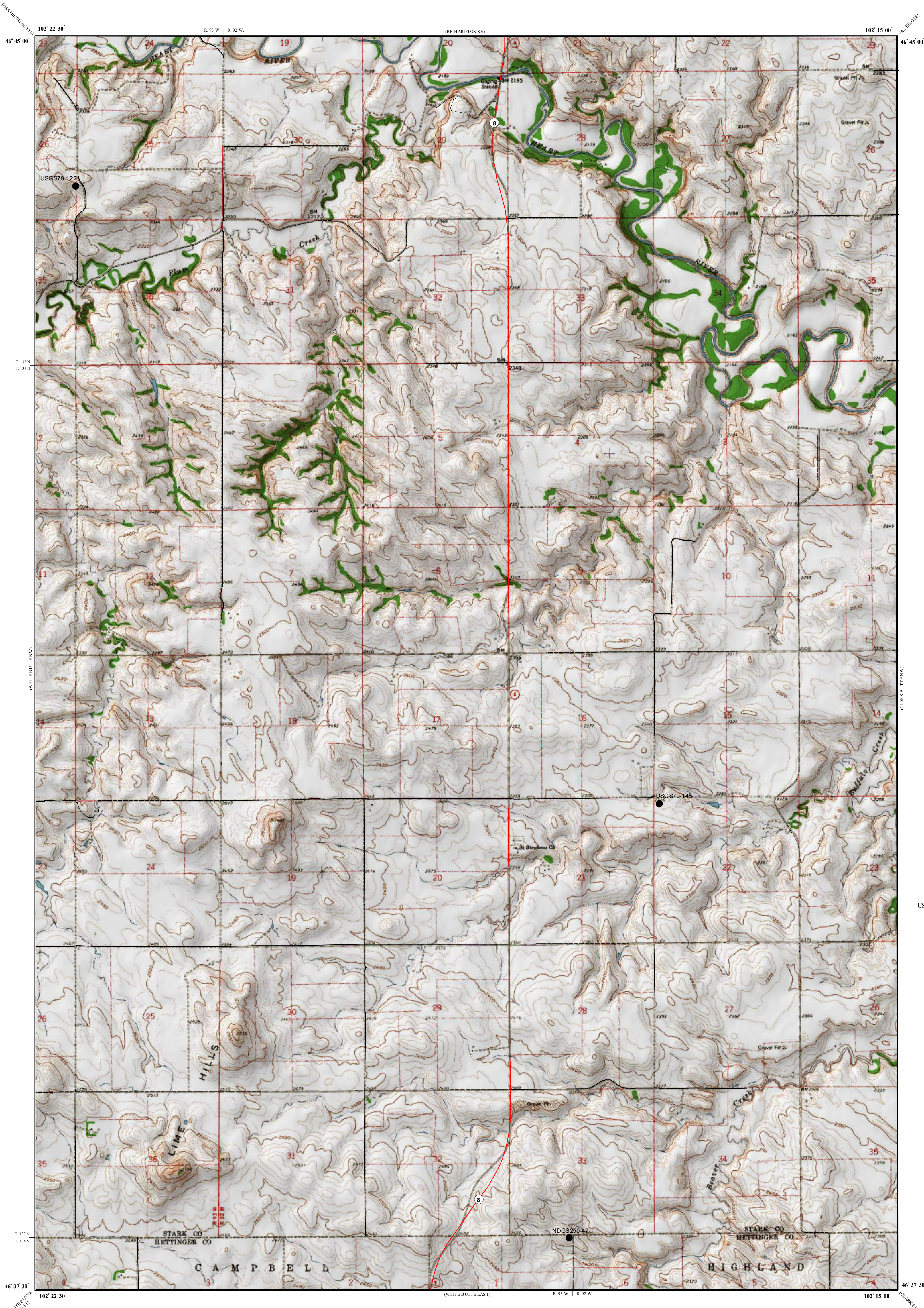


# Lignite Reserves

## White Butte NE Quadrangle, North Dakota

Edward C. Murphy  
2008



### UNIT DESCRIPTIONS

**GU** Geology Undifferentiated

**I** Economic Coal Deposits

Economic coal deposits are those that meet the minimum criteria established by coal companies operating surface mines in North Dakota. These economic criteria include a minimum cumulative coal thickness of ten feet-typically occurring in less than two beds, a minimum individual bed thickness of at least 2.5 feet, a ratio of overburden to coal thickness of not more than 10:1, a minimum of 25 feet of overburden, and a maximum depth to coal of approximately 150 feet.

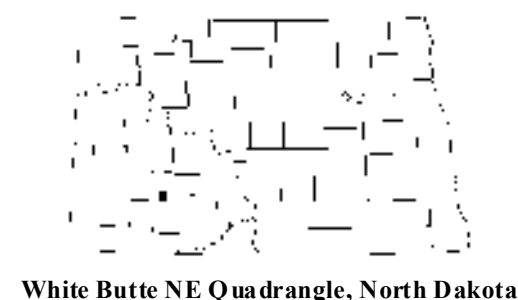
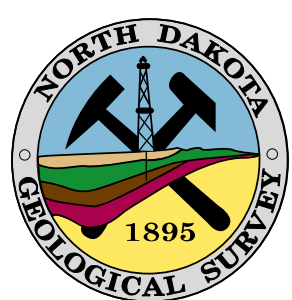
### Geologic Symbols

- Extent of Local Lignite Reserves
- Data Points  
Includes coal exploration NDGS/USGS drill holes, sub-surface mineral drill holes, oil & gas wells, and NDSWC drill holes.

USGS 79-145  
● Drill Hole Numbers

### Other Features

- State Highway
- Paved Road
- Unpaved Road



White Butte NE Quadrangle, North Dakota

