

Lignite Reserves

Cussicks Spring Quadrangle, North Dakota

Edward C. Murphy
2008

UNIT DESCRIPTIONS

 **Geology Undifferentiated**

 **Economic Coal Deposits**

Economic coal deposits are those that meet the minimum criteria established by coal companies operating surface mines in North Dakota. These economic criteria include a minimum cumulative coal thickness of ten feet-typically occurring in less than two beds, a minimum individual bed thickness of at least 2.5 feet, a ratio of overburden to coal thickness of not more than 10:1, a minimum of 25 feet of overburden, and a maximum depth to coal of approximately 150 feet.


Geologic Symbols

 Extent of Local Lignite Reserves

 Data Points

Includes Coal Exploration NDGS/USGS drill holes, Sub-surface Mineral drill holes, Oil & Gas drill holes, and NDSWC drill holes.

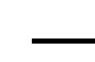
 Drill Hole Numbers

 Thickness (in feet) of Mineable Lignite

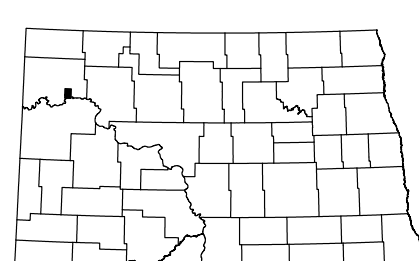
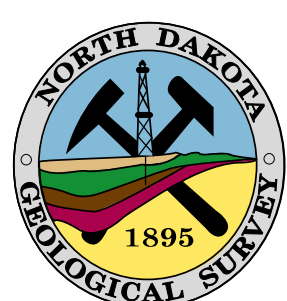
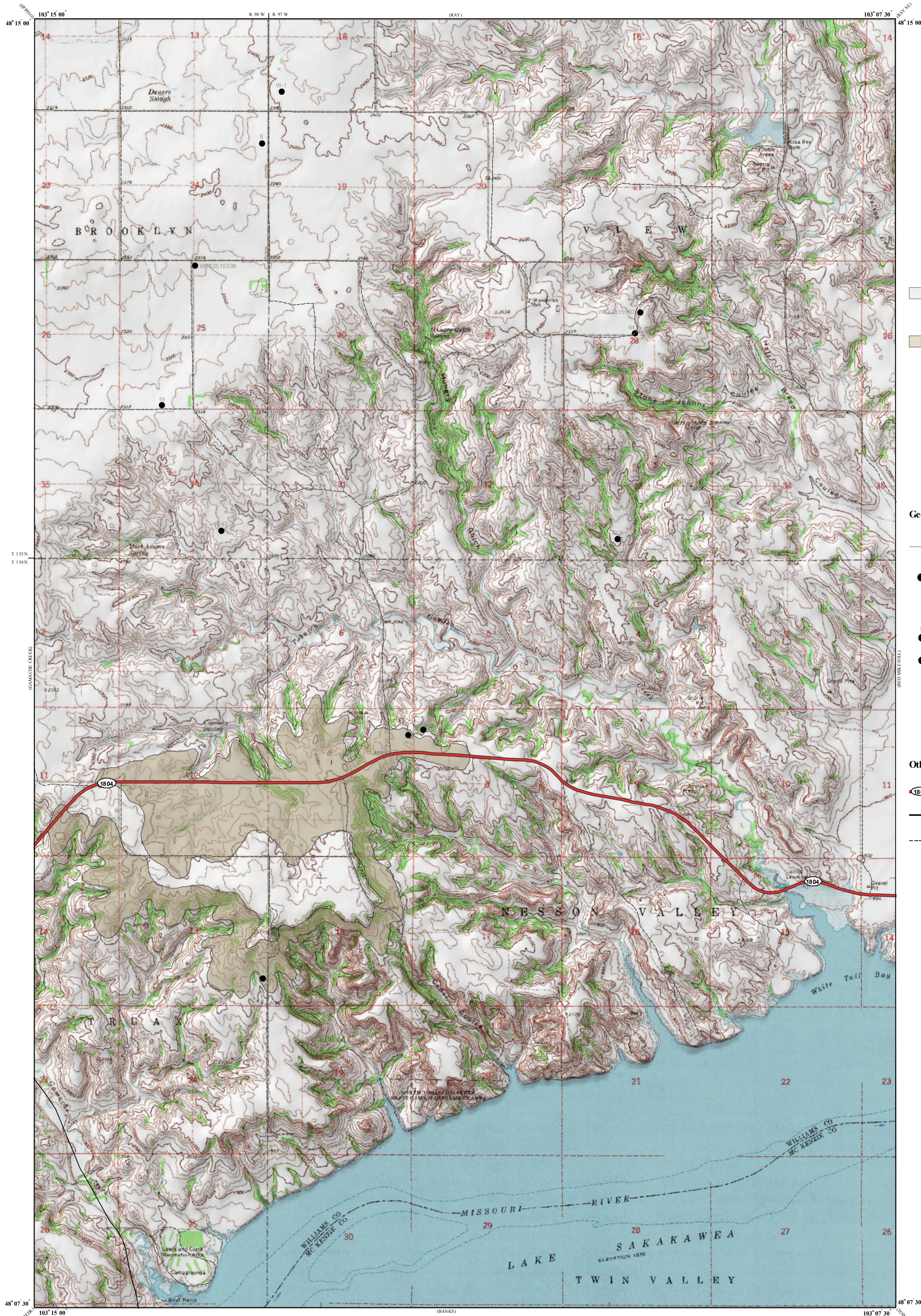
Coal thicknesses were determined by interpretation of electric logs from individual drill holes. Gamma and density logs were typically available for coal exploration holes but, oil wells were often limited to a gamma log run through surface casing.

Other Features

 State Highway

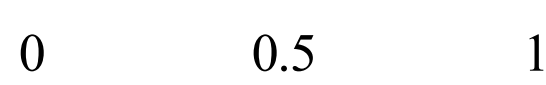
 Paved Road

 Unpaved Road



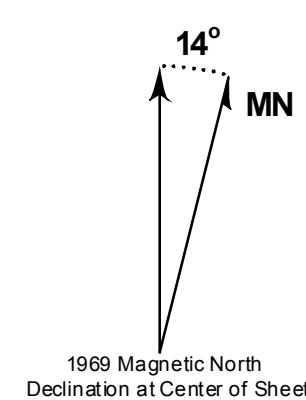
Cussicks Spring Quadrangle, North Dakota

Scale 1:24,000



Miles

Lambert Conformal Conic Projection Standard Parallels 48° 07' 30" and 48° 15' 00"
1927 North American Datum NGVD 1929
USGS 7.5 Minute Topographic Map Contour Interval 20 Feet
Road Layer Rectified to 2003 NAIP Digital Orthophoto



This project supported, in part by the U.S Geological Survey, Department of Interior, under assistance awards 02ERAG0016 and 05ERAG0053.