

# Lignite Reserves

## Fort Clark NE Quadrangle, North Dakota

Edward C. Murphy

2007

### UNIT DESCRIPTIONS

 Geology Undifferentiated

 Economic Coal Deposits

Economic coal deposits are those that meet the minimum criteria established by coal companies operating surface mines in North Dakota. These economic criteria include a minimum cumulative coal thickness of ten feet—typically occurring in less than two beds, a minimum individual bed thickness of at least 2.5 feet, a ratio of overburden to coal thickness of not more than 10:1, a minimum of 25 feet of overburden, and a maximum depth to coal of approximately 150 feet.

### Geologic Symbols

 Extent of Local Lignite Reserves

 Data Points

Includes Coal Exploration, NDGS/USGS drill holes, Surface Mine drill holes, Oil & Gas drill holes, and NDSW C drill holes.

 16 G

 Drill Hole Numbers

 Thickness (in feet) of Mineable Lignite

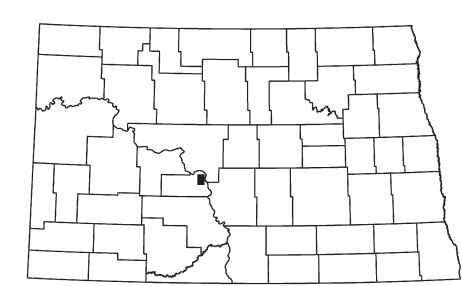
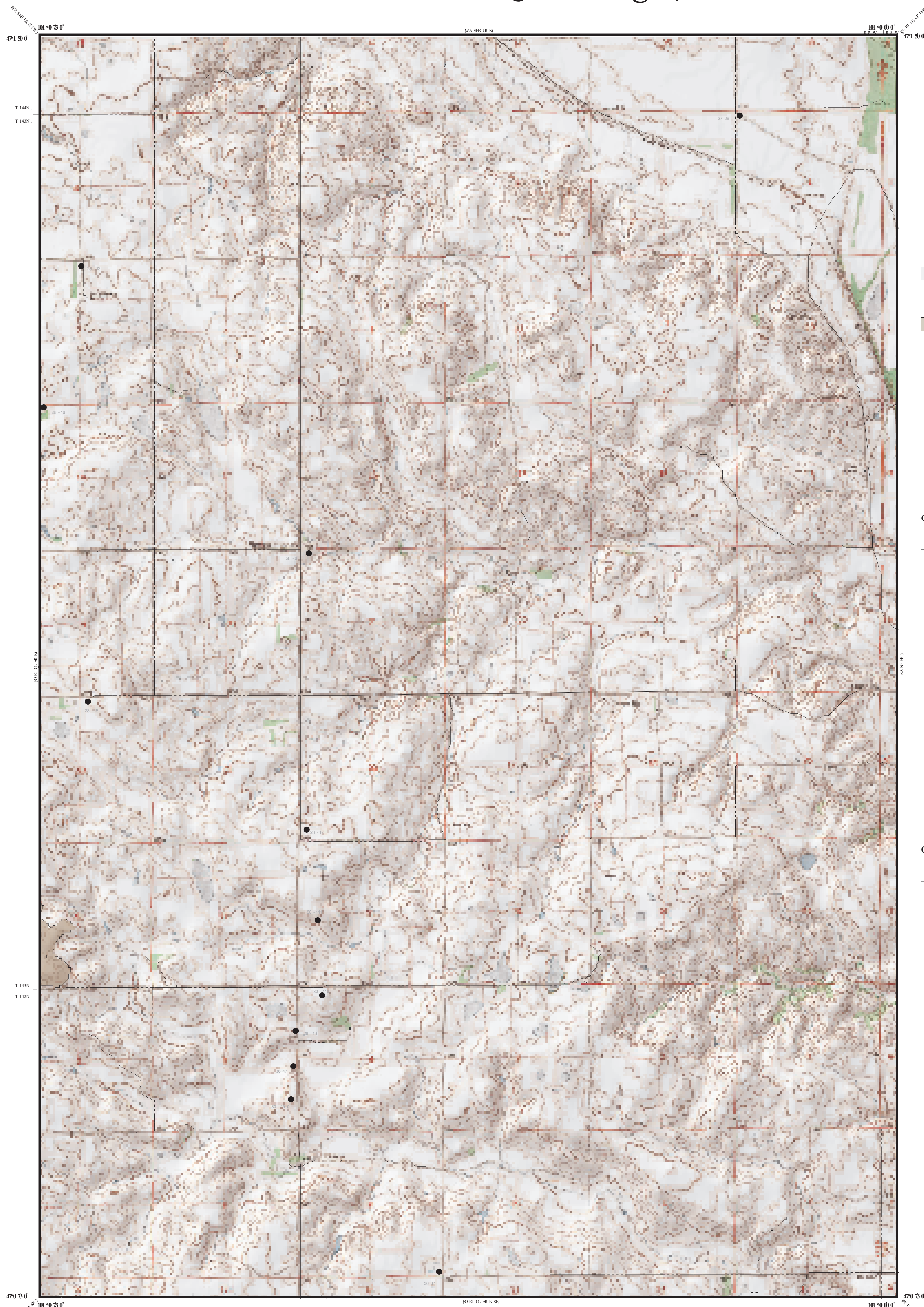
Thickness in ( ) signifies two beds of coal.

Coal thicknesses were determined by interpretation of electric logs from individual drill holes. Gamma and density logs were typically available for coal exploration holes but, oil wells were often limited to a gamma log run through surface casing.

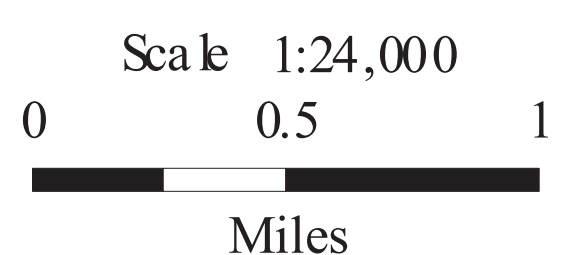
### Other Features

 Paved Road

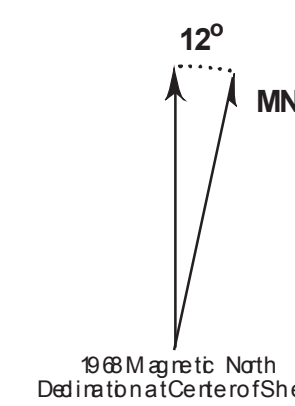
 Unpaved Road



Fort Clark NE Quadrangle, North Dakota



Lambert Conformal Conic Projection Standard Parallels 47° 03' 00" and 47° 13' 00"  
82.7 North American Datum NGVD1983  
USGS 7.5 Minute Topographic Map Contour Interval 20 Feet  
Road Layer Referenced to 2008 NAIP Digital Orthophoto



12° Magnetic North  
Declination at Center of Sheet

This project was supported by, in part by the U.S. Geological Survey, Department of Interior, under assistance awards 02ER-TAC016 and 05ER-AC053.