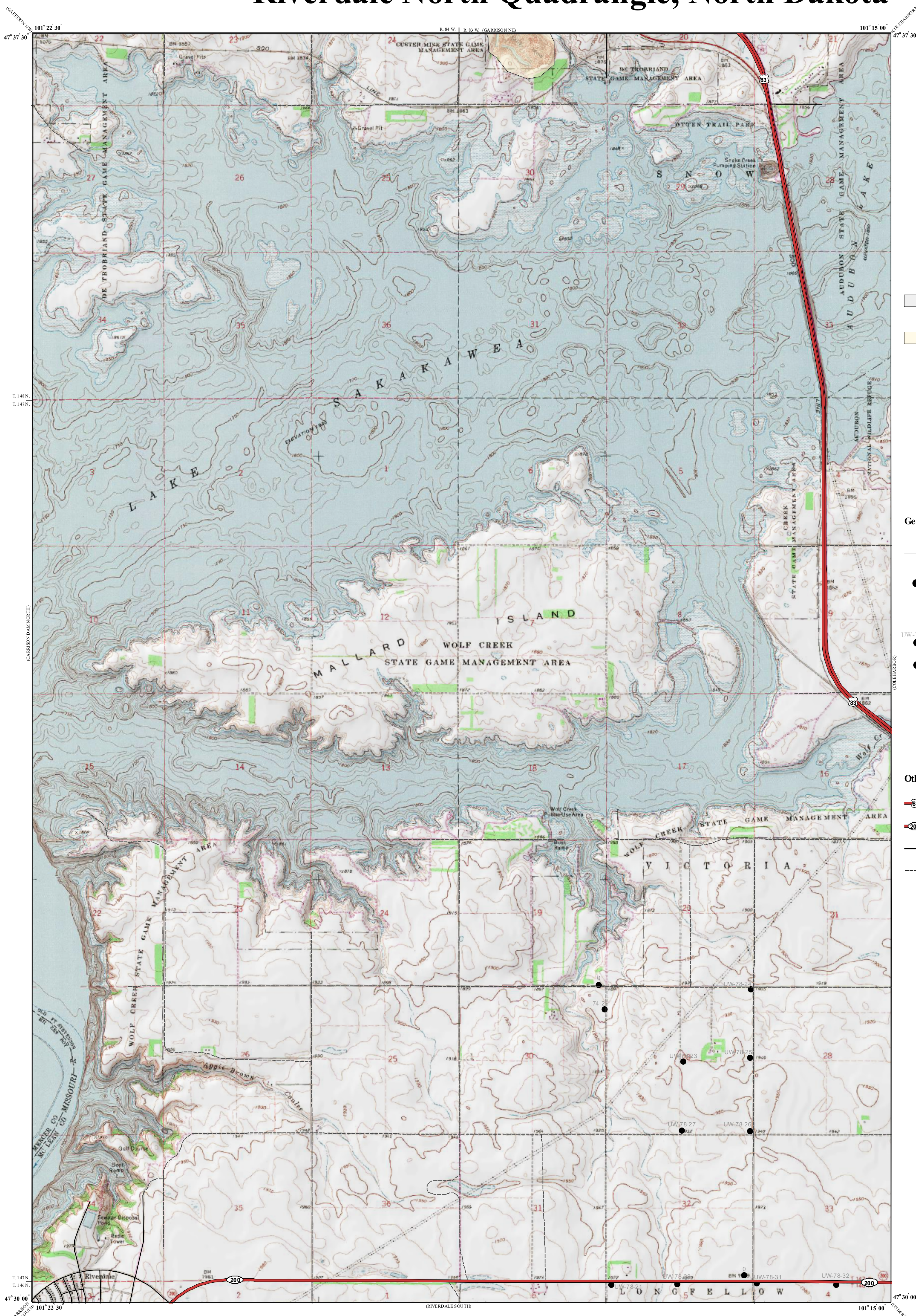


Lignite Reserves

Riverdale North Quadrangle, North Dakota

Edward C. Murphy
2008



UNIT DESCRIPTIONS

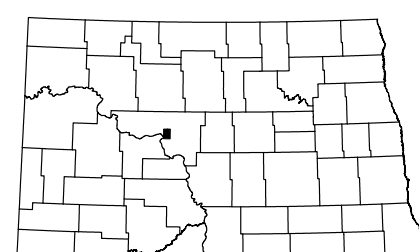
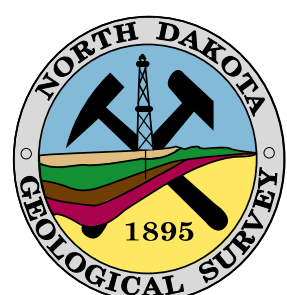
- Geology Undifferentiated
- Mined Area

Geologic Symbols

- Extent of Local Lignite Reserves
 - Data Points
Includes Coal Exploration NDGS/USGS drill holes, Sub-surface Mineral drill holes, Oil & Gas drill holes, and NDSWC drill holes.
 - UW-78-24
● Drill Hole Numbers
 - 10
● Thickness (in feet) of Mineable Lignite
- Coal thicknesses were determined by interpretation of electric logs from individual drill holes. Gamma and density logs were typically available for coal exploration holes but, oil wells were often limited to a gamma log run through surface casing.

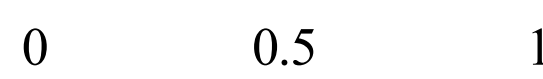
Other Features

- US Highway
- State Highway
- Paved Road
- Unpaved Road



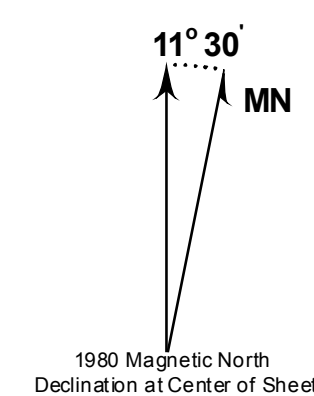
Riverdale North Quadrangle, North Dakota

Scale 1:24,000



Miles

Lambert Conformal Conic Projection Standard Parallels 47° 30' 00" and 47° 37' 30"
1927 North American Datum NGVD 1929
USGS 7.5 Minute Topographic Map Contour Interval 10 Feet
Road Layer Rectified to 2003 NAIP Digital Orthophoto



This project supported, in part by the U.S Geological Survey, Department of Interior, under assistance awards 02ERAG0016 and 05ERAG0053.