

Areas of Landslides Absaraka Quadrangle, North Dakota

**Christopher A. Maike
&
Levi D. Moxness**

2022

UNIT DESCRIPTIONS

QUATERNARY SYSTEM

RECENT/PLEISTOCENE

Q_{15a} Areas of Recently Active Landslides

Landslide areas showing movement between 2008 and 2020.

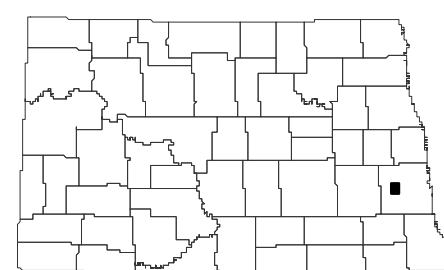
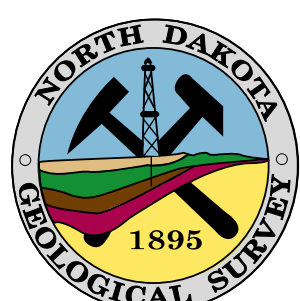
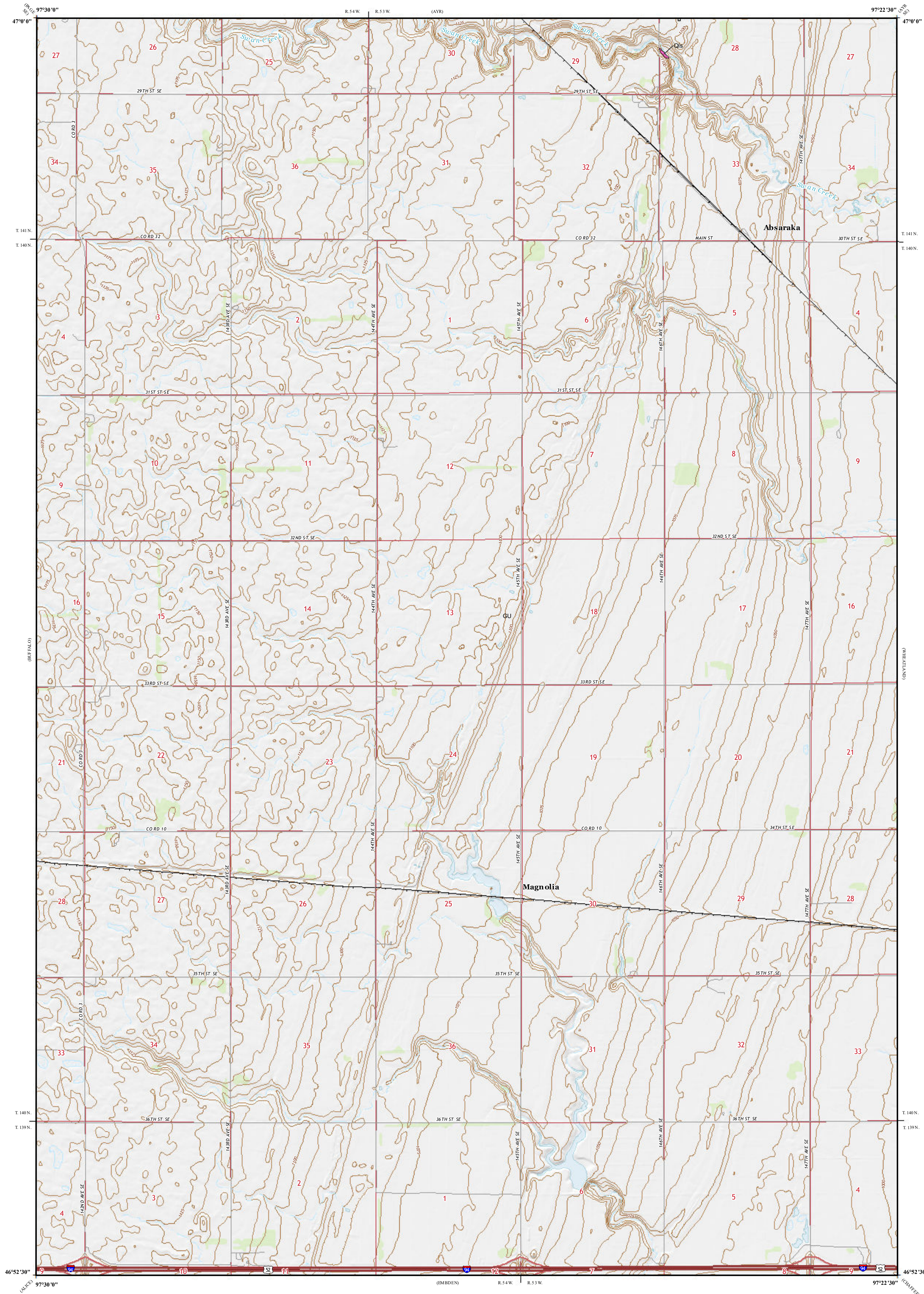
Q₁₅ Landslide Deposits

A mass of material that has moved downslope. Includes earth flows, slumps, and areas of soil creep.

Landslides identified on this quadrangle were mapped from stereo pairs, black and white 1:20,000 scale aerial photographs flown in 1954 by the United States Department of Agriculture (USDA). Additional data sources include digital orthophotography from the USDA National Agriculture Imagery Program (NAIP) flown in September to October 2021 and the North Dakota Geological Survey LiDAR Map Series, which compiles raw data flown in May 2019 from the North Dakota State Water Commission. Landslide mapping originally completed by Moxness in 2021 has been updated on this map after reviewing recently published LiDAR elevation data and contemporary imagery.

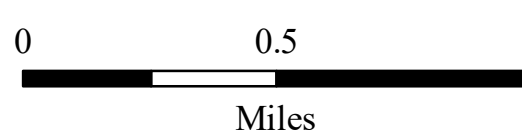
ROAD CLASSIFICATION

- | | | | |
|------------------|---|-----------------|---|
| Expressway | — | Local Connector | — |
| Secondary Hwy | — | Local Road | — |
| Ramp | — | 4WD | — |
| Interstate Route | — | US Route | — |
| | — | State Route | — |



Absaraka Quadrangle, North Dakota

Scale 1:24,000



Miles

Lambert Conformal Conic Projection
North American 1983 Datum
USGS 7.5 Minute Topo Map

Standard Parallel: 46°52'30"N, 47°00'0"N
NGVD 1988
Contour Interval: 5 Feet

