

Areas of Landslides

Indian Butte Quadrangle, North Dakota

**Christopher A. Maike
&
Fred J. Anderson**

2023

UNIT DESCRIPTIONS

Geology Undifferentiated

QUATERNARY SYSTEM

RECENT/PLEISTOCENE

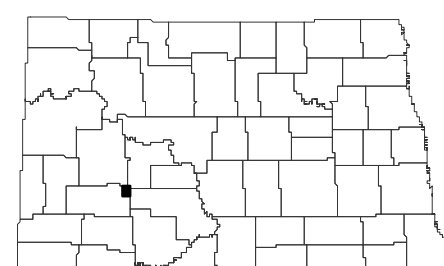
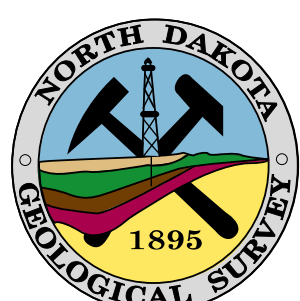
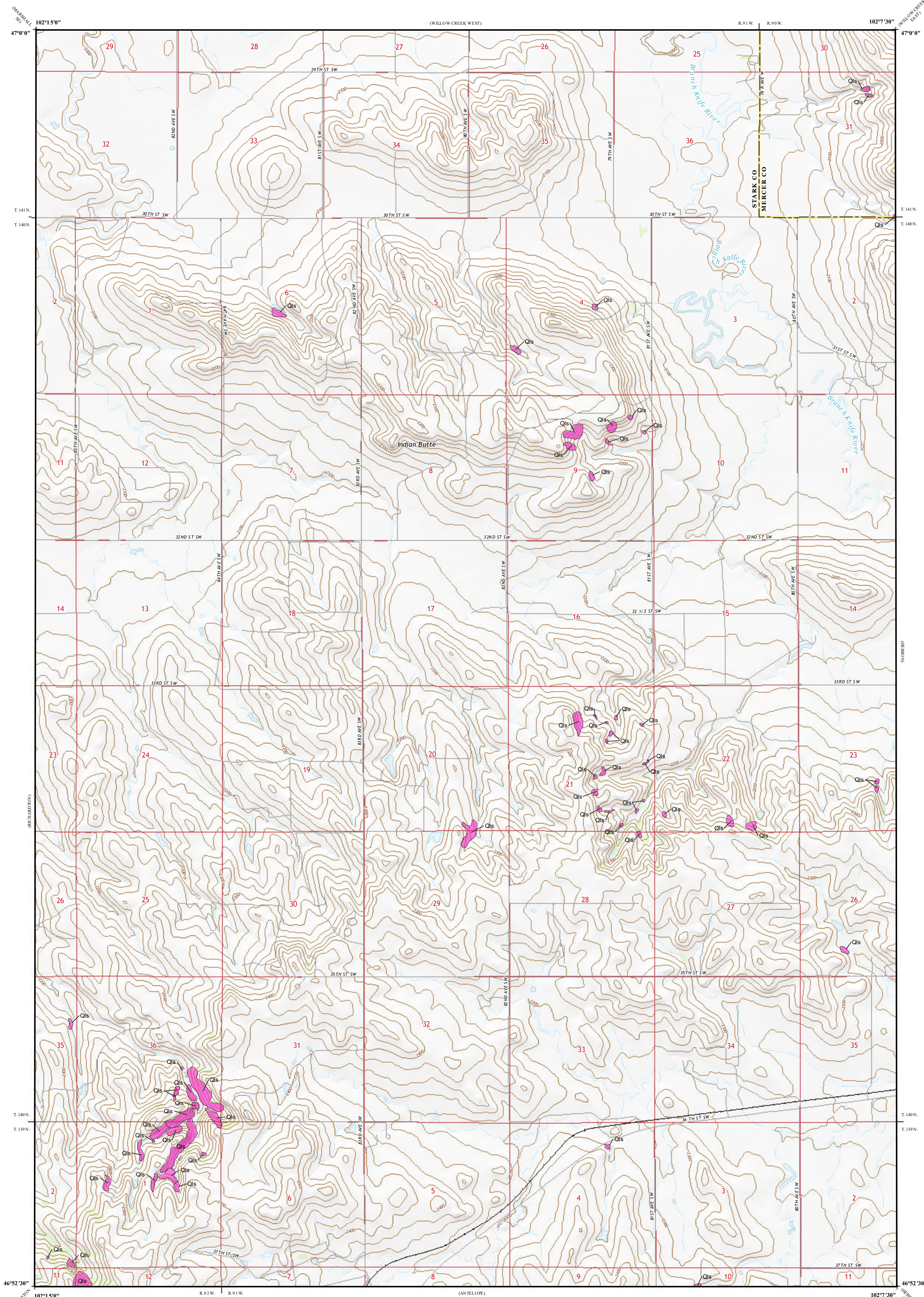
Landslide Deposits

A mass of material that has moved downslope. Includes earth flows, slumps, and areas of soil creep.

Landslides identified on this quadrangle were mapped from stereo pairs, black and white 1:20,000 scale aerial photographs flown in June to September 1958 by the United States Department of Agriculture (USDA). Additional data sources include digital orthophotography from the USDA National Agriculture Imagery Program (NAIP) flown in September to October 2021 and the North Dakota Geological Survey LiDAR Map Series, which compiles raw data flown in November 2021 from the North Dakota State Water Commission.

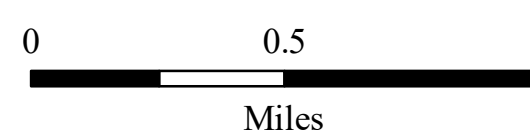
ROAD CLASSIFICATION

Expressway		Local Connector	
Secondary Hwy		Local Road	
Ramp		4WD	
	Interstate Route		US Route
	State Route		



Indian Butte Quadrangle, North Dakota

Scale 1:24,000



Lambert Conformal Conic Projection
North American 1983 Datum
USGS 7.5 Minute Topo Map

Standard Parallel: 46°52'30"N, 47°00'0"N
NGVD 1988
Contour Interval 20 Feet

