

Areas of Landslides

White Butte West Quadrangle, North Dakota

**Christopher A. Maike
&
Fred J. Anderson**

2023

UNIT DESCRIPTIONS

Geology Undifferentiated

QUATERNARY SYSTEM

RECENT/PLEISTOCENE

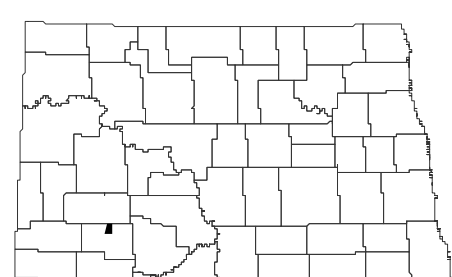
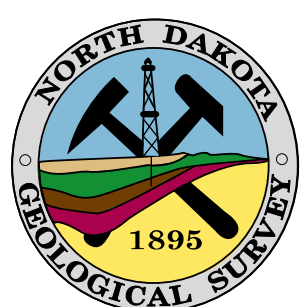
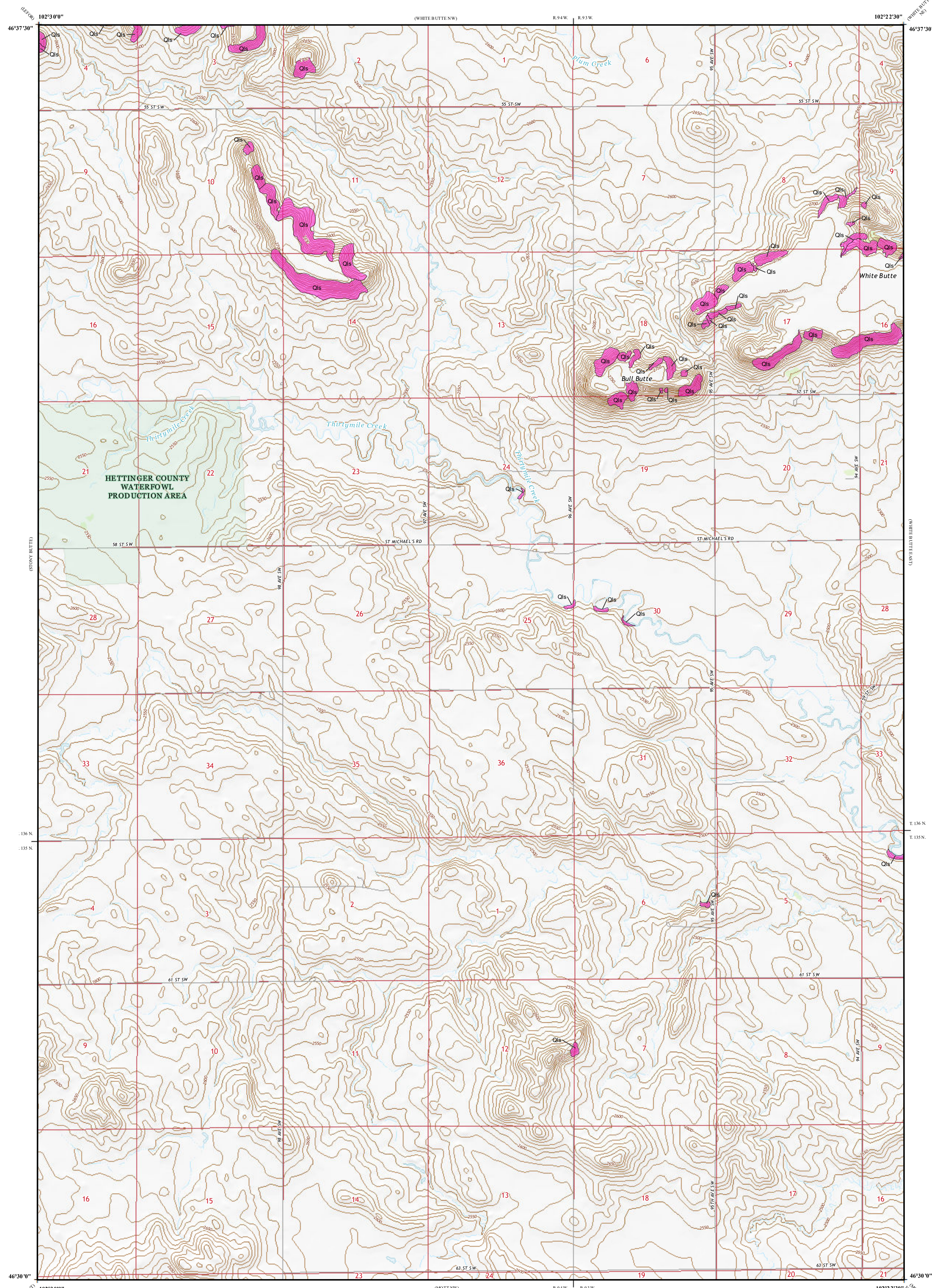
Qls Landslide Deposits

A mass of material that has moved downslope. Includes earth flows, slumps, and areas of soil creep.

Landslides identified on this quadrangle were mapped from stereo pairs, black and white 1:20,000 scale aerial photographs flown in July 1957 by the United States Department of Agriculture (USDA). Additional data sources include digital orthophotography from the USDA National Agriculture Imagery Program (NAIP) flown in October 2021 and the North Dakota Geological Survey LiDAR Map Series, which compiles raw data flown in November 2021 from the North Dakota State Water Commission.

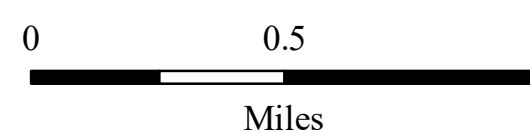
ROAD CLASSIFICATION

	Expressway		Local Connector		Local Road
	Secondary Hwy		4WD		State Route
	Interstate Route		US Route		State Route



White Butte West Quadrangle, North Dakota

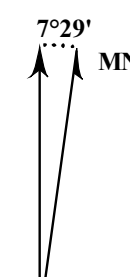
Scale 1:24,000



Miles

Lambert Conformal Conic Projection
North American 1983 Datum
USGS 7.5 Minute Topo Map

Standard Parallels 46°30'N, 46°37'30"N
NGVD 1988
Contour Interval 10 Feet



2014 Magnetic North
Declination at Center of Sheet