

Areas of Landslides Manvel Quadrangle, North Dakota

**Benjamin C. York
&
Christopher A. Maike**

2023

UNIT DESCRIPTIONS

Area Not Mapped

QUATERNARY SYSTEM

RECENT/PLEISTOCENE

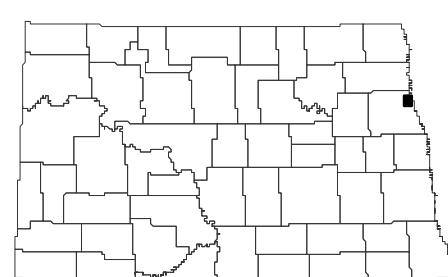
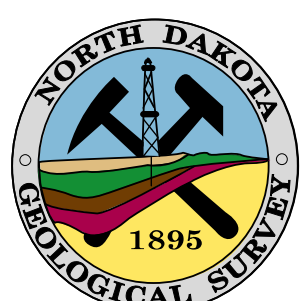
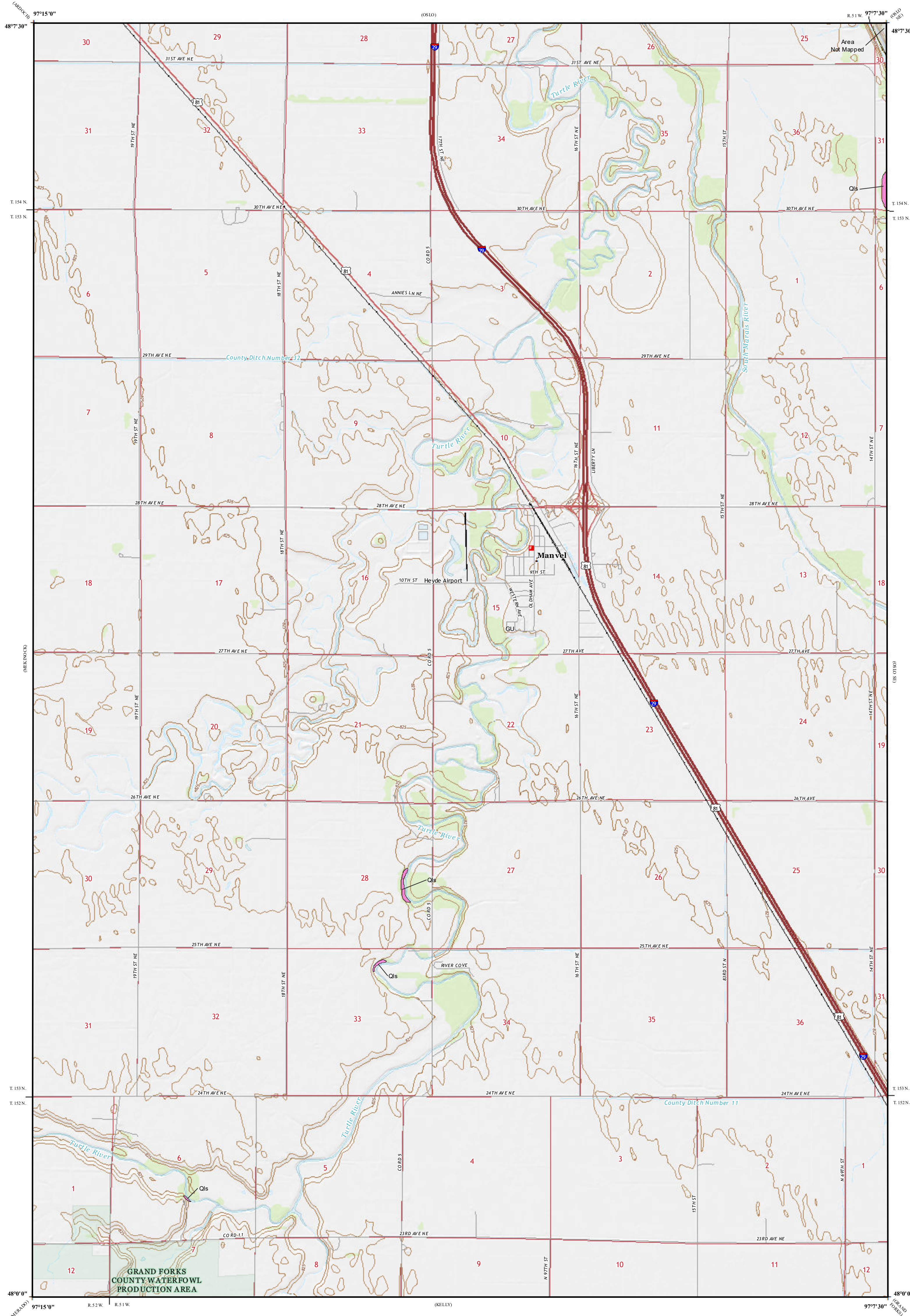
Qls Landslide Deposits

A mass of material that has moved downslope. Includes earth flows, slumps, and areas of soil creep.

Landslides identified on this quadrangle were mapped from stereo pairs, black and white 1:20,000 scale aerial photographs flown in 1954 by the United States Department of Agriculture (USDA). Additional data sources include digital orthophotography from the USDA National Agriculture Imagery Program (NAIP) flown in August 2021 and the North Dakota Geological Survey LiDAR Map Series, which compiles raw data flown in October to November 2020 from the North Dakota State Water Commission.

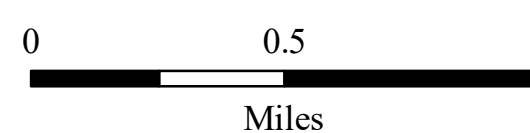
ROAD CLASSIFICATION

Expressway	Local Connector	
Secondary Hwy	Local Road	
Ramp	4WD	
Interstate Route	US Route	State Route



Manvel Quadrangle, North Dakota

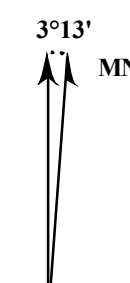
Scale 1:24,000



Miles

Lambert Conformal Conic Projection
North American 1983 Datum
USGS 7.5 Minute Topo Map

Standard Parallels 48°00'N, 48°7'30"N
NGVD 1988
Contour Interval 5 Feet



2017 Magnetic North
Declination at Center of Sheet