

Areas of Landslides Orr Quadrangle, North Dakota

**Benjamin C. York
&
Christopher A. Maike**

2023

UNIT DESCRIPTIONS

QUATERNARY SYSTEM

RECENT/PLEISTOCENE

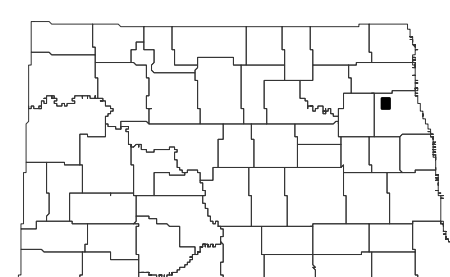
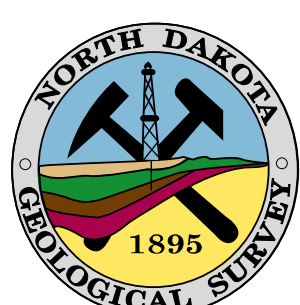
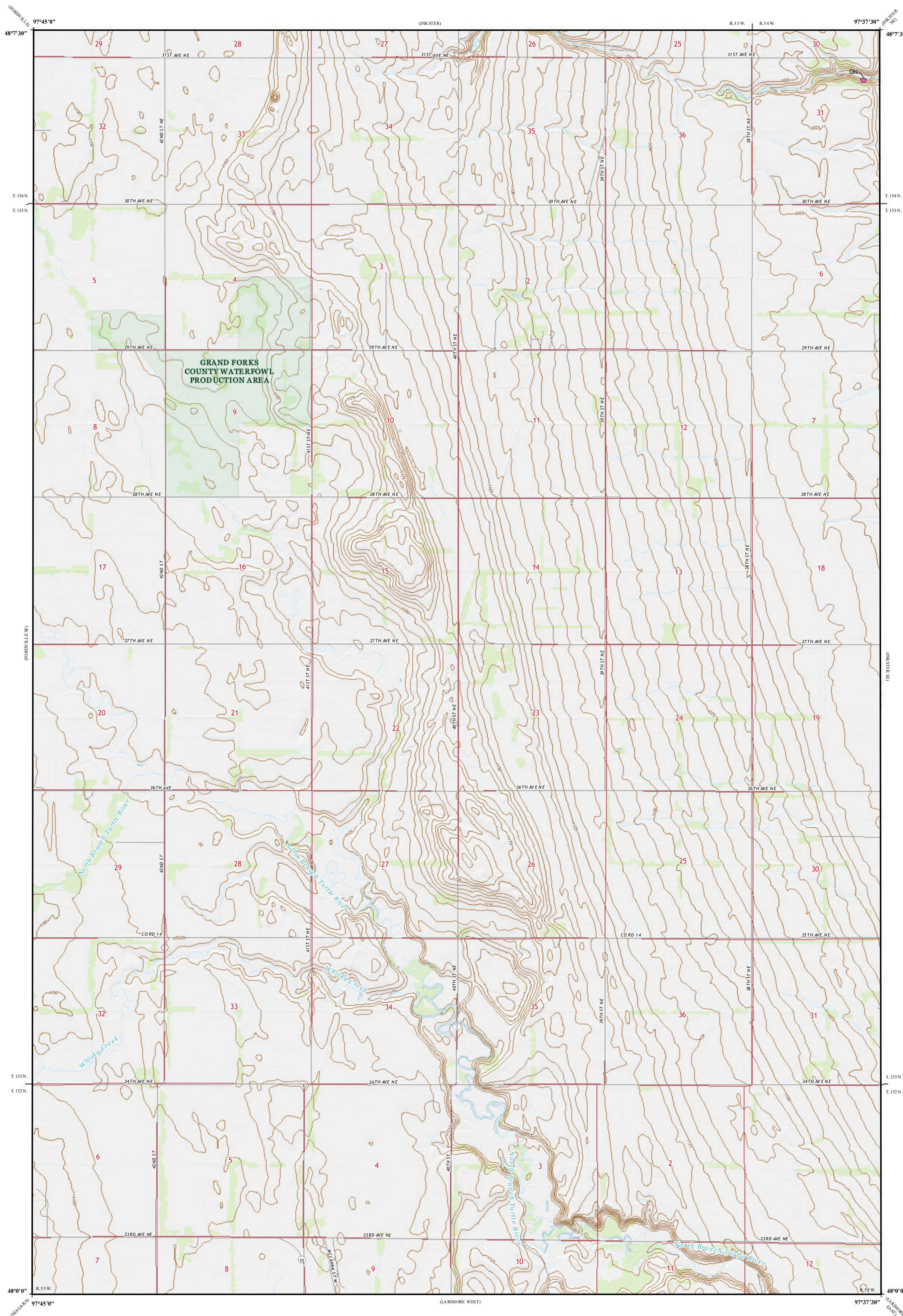
Qs Landslide Deposits

A mass of material that has moved downslope. Includes earth flows, slumps, and areas of soil creep.

Landslides identified on this quadrangle were mapped from stereo pairs, black and white 1:20,000 scale aerial photographs flown in 1962 by the United States Department of Agriculture (USDA). Additional data sources include digital orthophotography from the USDA National Agriculture Imagery Program (NAIP) flown in September 2021 and the North Dakota Geological Survey LiDAR Map Series, which compiles raw data flown in October to November 2020 from the North Dakota State Water Commission.

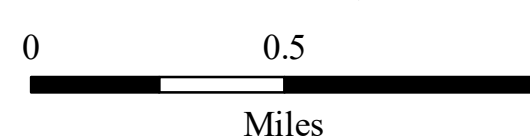
ROAD CLASSIFICATION

- | | | | |
|---------------|------------------|-----------------|-------------|
| Expressway | | Local Connector | |
| Secondary Hwy | | Local Road | |
| Ramp | | 4WD | |
| | Interstate Route | | US Route |
| | | | State Route |



Orr Quadrangle, North Dakota

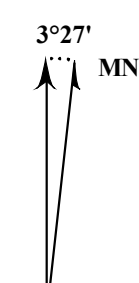
Scale 1:24,000



Miles

Lambert Conformal Conic Projection
North American 1983 Datum
USGS 7.5 Minute Topo Map

Standard Parallel 48°00'N, 48°30'N
NGVD 1988
Contour Interval 5 Feet



2019 Magnetic North
Declination at Center of Sheet