

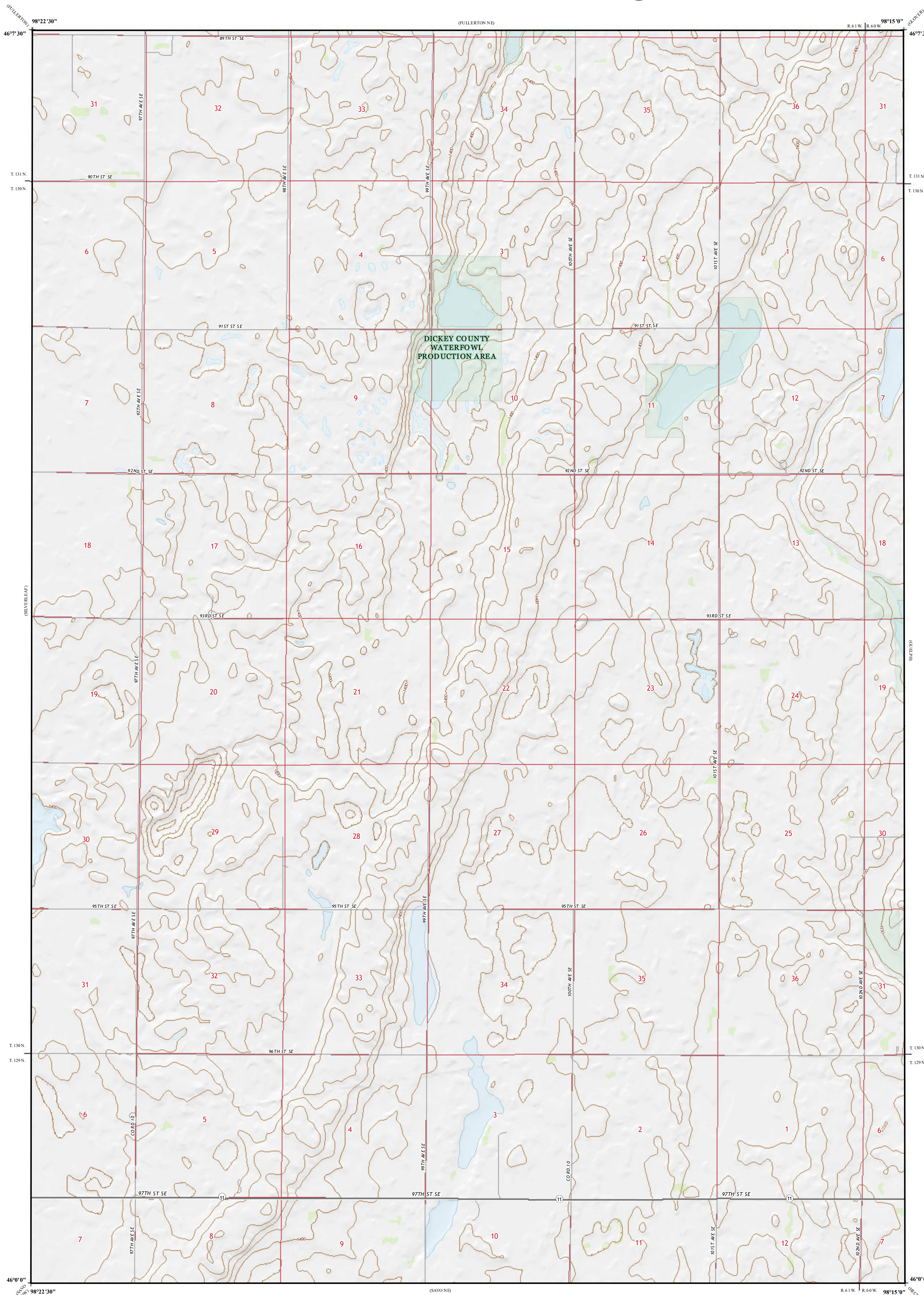
# Areas of Landslides

## Fullerton SE Quadrangle, North Dakota

**Benjamin C. York  
&  
Levi D. Moxness**

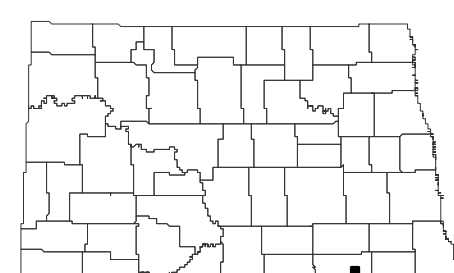
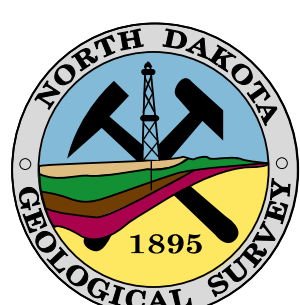
**2023**

Areas of landslides were investigated within this quadrangle based on a review of county historical aerial photography flown in July 1957 by the United States Department of Agriculture (USDA). Additional data sources include digital orthophotography from the USDA National Agriculture Imagery Program (NAIP) flown in September to October 2021 and the North Dakota Geological Survey LiDAR Map Series, which compiles raw data flown in November 2020 from the North Dakota State Water Commission. From this investigation, no landslides were mapped within the quadrangle.



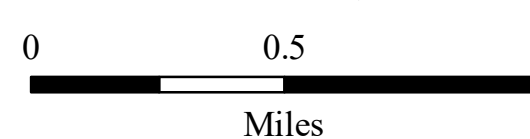
### ROAD CLASSIFICATION

- |               |                  |                 |          |  |             |
|---------------|------------------|-----------------|----------|--|-------------|
| Expressway    |                  | Local Connector |          |  |             |
| Secondary Hwy |                  | Local Road      |          |  |             |
| Ramp          |                  | 4WD             |          |  |             |
|               | Interstate Route |                 | US Route |  | State Route |



Fullerton SE Quadrangle, North Dakota

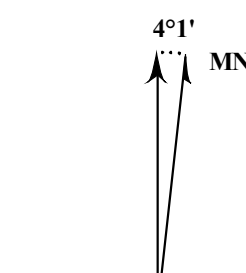
Scale 1:24,000



Miles

Lambert Conformal Conic Projection  
North American 1983 Datum  
USGS 7.5 Minute Topo Map

Standard Parallels 46°00'N, 46°30'N  
NGVD 1988  
Contour Interval 10 Feet



2019 Magnetic North  
Declination at Center of Sheet