

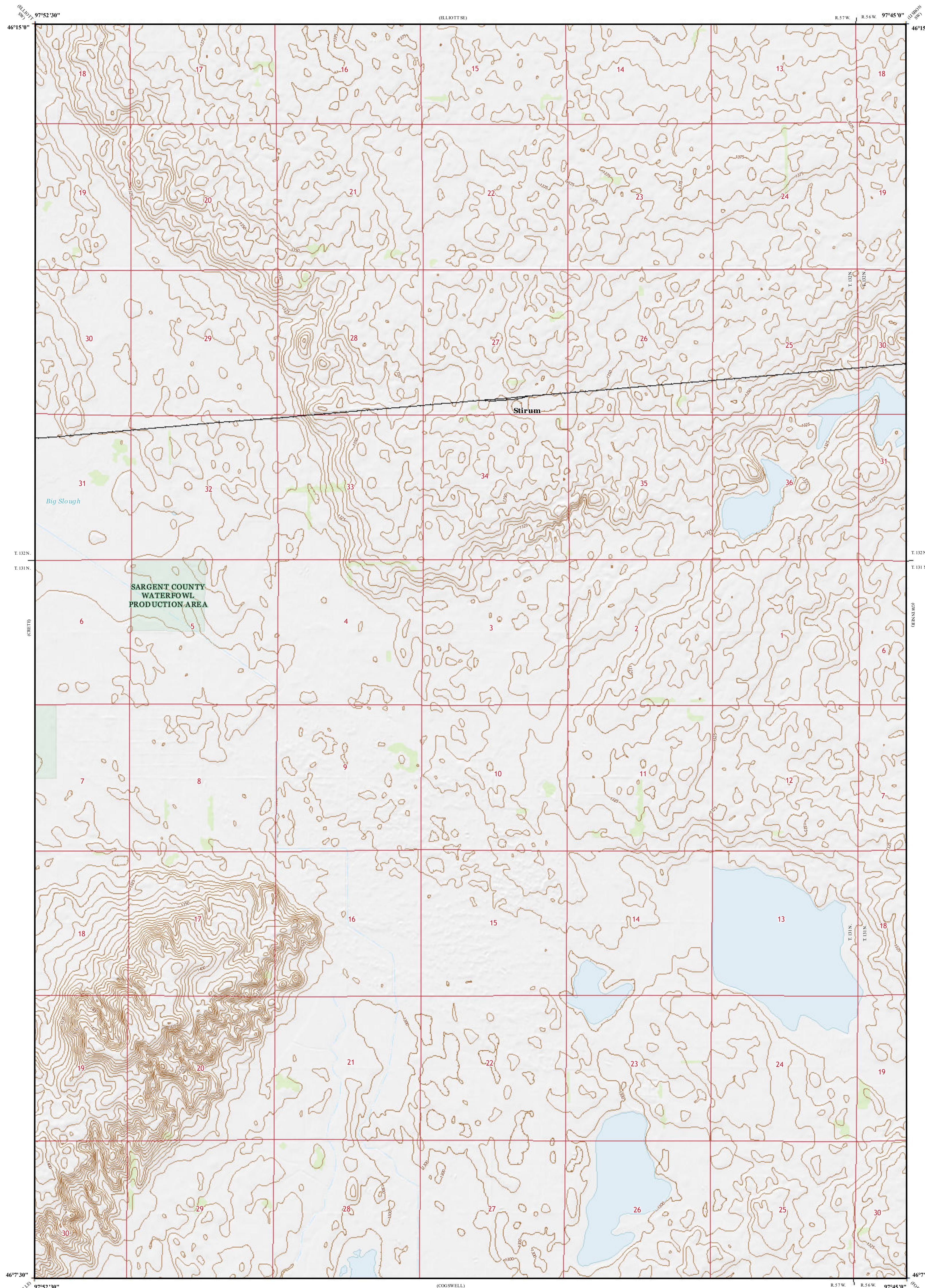
# Areas of Landslides

## Stirum Quadrangle, North Dakota

**Benjamin C. York  
&  
Levi D. Moxness**

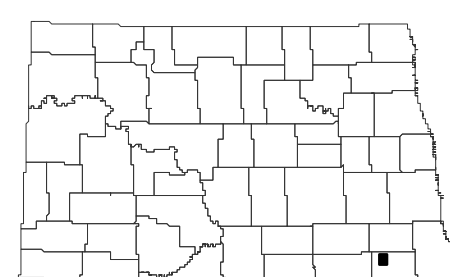
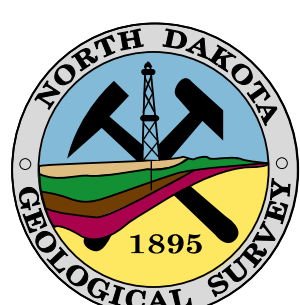
**2023**

Areas of landslides were investigated within this quadrangle based on a review of county historical aerial photography flown in September 1960 by the United States Department of Agriculture (USDA). Additional data sources include digital orthophotography from the USDA National Agriculture Imagery Program (NAIP) flown in September 2021 and the North Dakota Geological Survey LiDAR Map Series, which compiles raw data flown in November to December 2020 from the North Dakota State Water Commission. From this investigation, no landslides were mapped within the quadrangle.

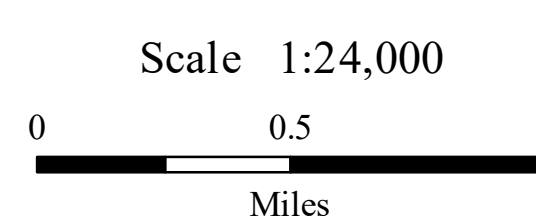


### ROAD CLASSIFICATION

- |               |                  |                 |          |  |             |
|---------------|------------------|-----------------|----------|--|-------------|
| Expressway    |                  | Local Connector |          |  |             |
| Secondary Hwy |                  | Local Road      |          |  |             |
| Ramp          |                  | 4WD             |          |  |             |
|               | Interstate Route |                 | US Route |  | State Route |



Stirum Quadrangle, North Dakota



Lambert Conformal Conic Projection  
North American 1983 Datum  
USGS 7.5 Minute Topo Map

Standard Parallel: 46°22'0"N, 46°15'0"N  
NGVD 1988  
Contour Interval 10 Feet

