

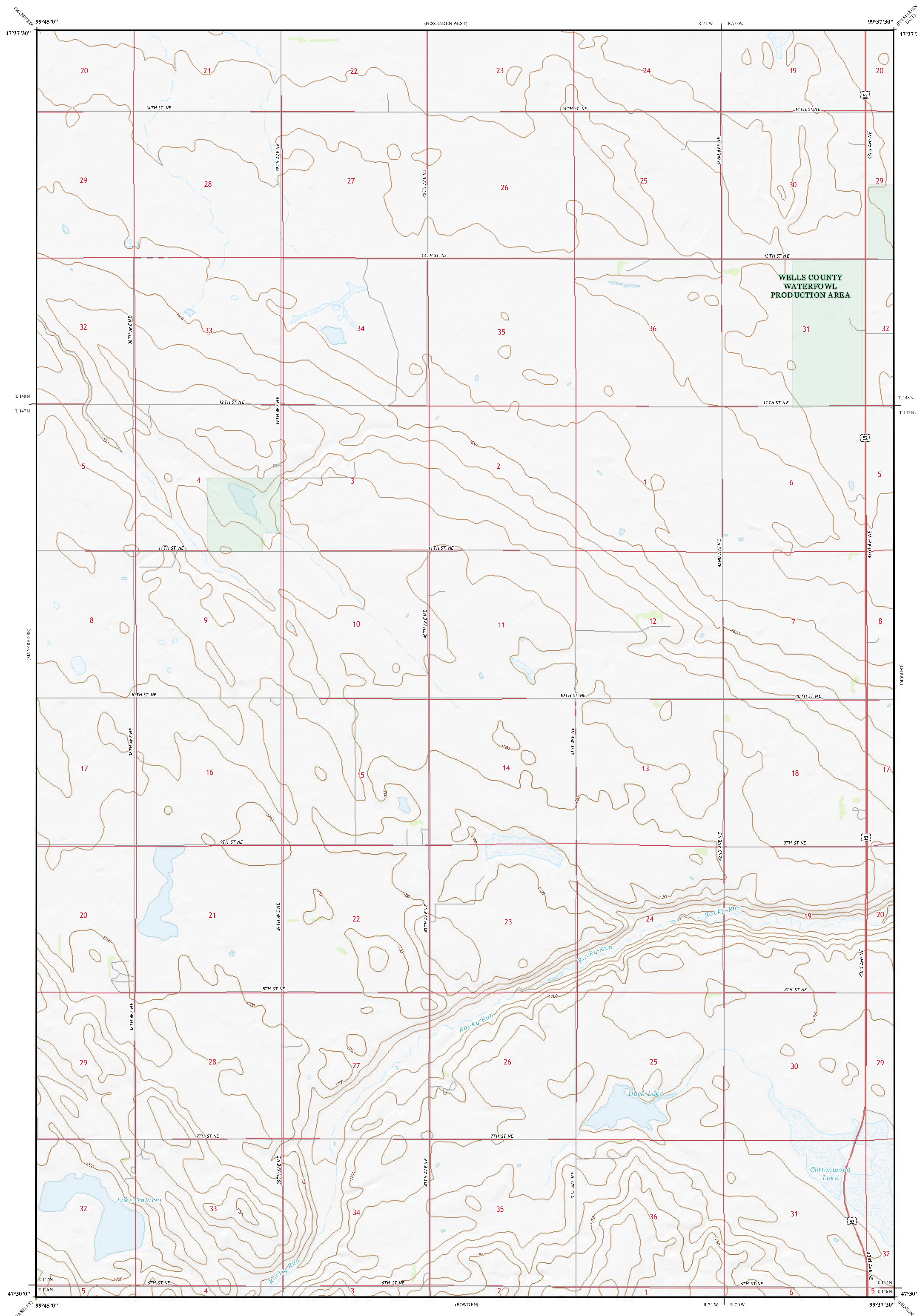
Areas of Landslides

Fessenden SW Quadrangle, North Dakota

Christopher A. Maike

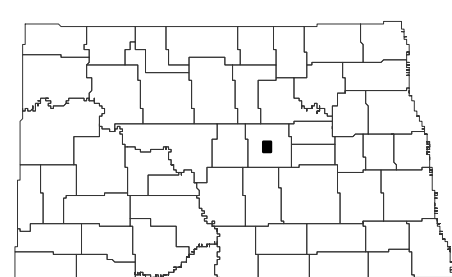
2023

Areas of landslides were investigated within this quadrangle based on a review of county historical aerial photography flown in 1959 by the United States Department of Agriculture (USDA). Additional data sources include digital orthophotography from the USDA National Agriculture Imagery Program (NAIP) flown in September 2021 and the North Dakota Geological Survey LiDAR Map Series, which compiles raw data flown in April 2021 from the North Dakota State Water Commission. From this investigation, no landslides were mapped within the quadrangle.

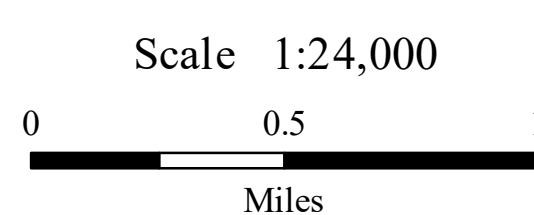


ROAD CLASSIFICATION

- | | | | |
|---------------|------------------|-----------------|----------|
| Expressway | | Local Connector | |
| Secondary Hwy | | Local Road | |
| Ramp | | 4WD | |
| | Interstate Route | | US Route |
| | State Route | | |



Fessenden SW Quadrangle, North Dakota



Lambert Conformal Conic Projection
North American 1983 Datum
USGS 7.5 Minute Topo Map

Standard Parallels: 47°30'00"N, 47°37'30"N
NGVD 1988
Contour Interval 10 Feet

