

Areas of Landslides

Maddock Quadrangle, North Dakota

Christopher A. Maike

2023

UNIT DESCRIPTIONS

QUATERNARY SYSTEM

RECENT/PLEISTOCENE

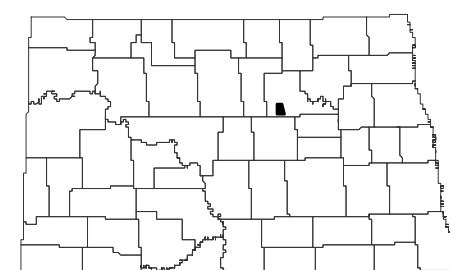
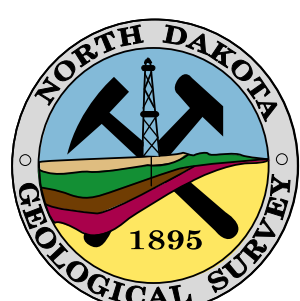
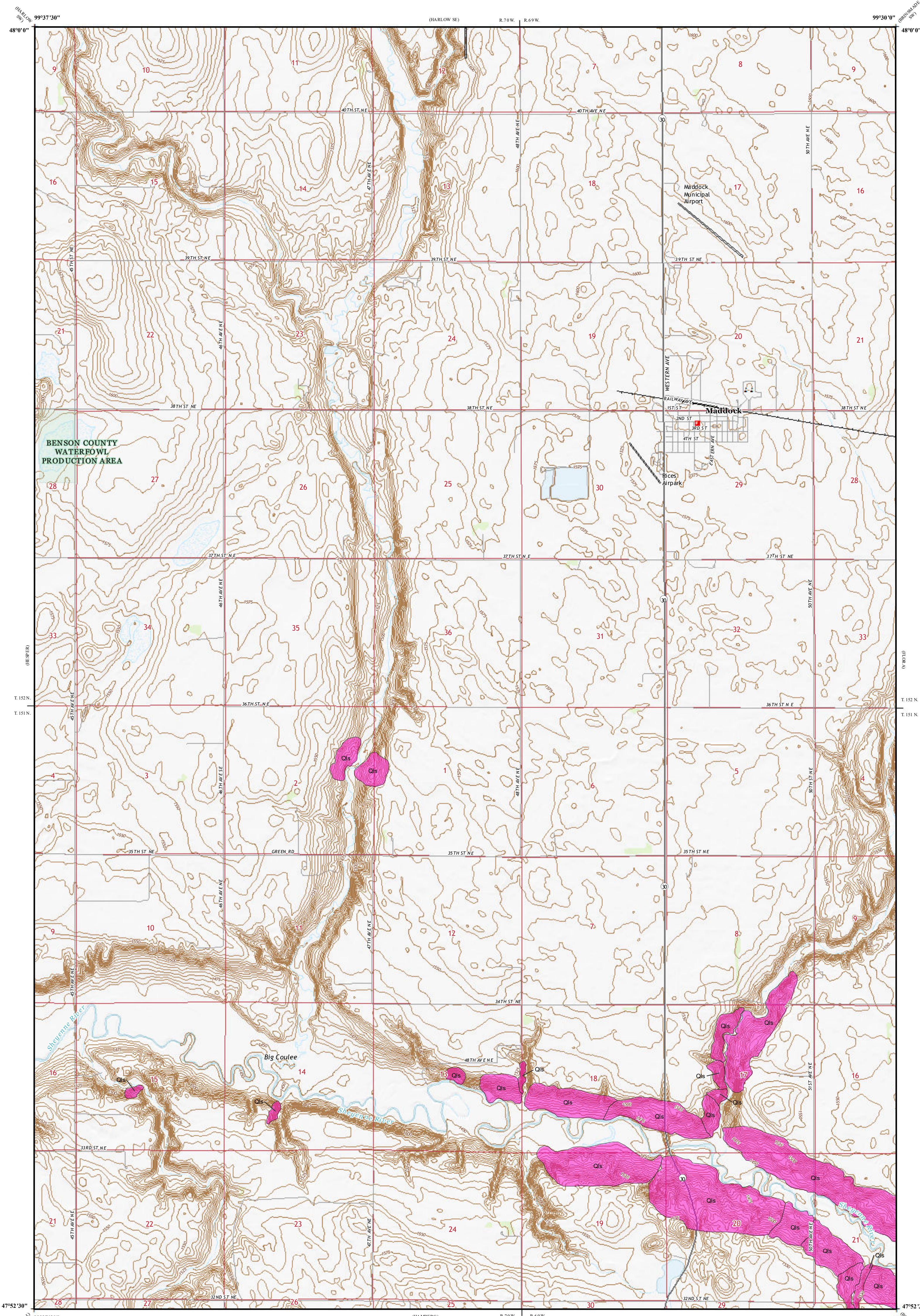
Qls Landslide Deposits

A mass of material that has moved downslope. Includes earth flows, slumps, and areas of soil creep.

Landslides identified on this quadrangle were mapped from stereo pairs, black and white 1:20,000 scale aerial photographs flown in 1959 by the United States Department of Agriculture (USDA). Additional data sources include digital orthophotography from the USDA National Agriculture Imagery Program (NAIP) flown in September 2021 and the North Dakota Geological Survey LiDAR Map Series, which compiles raw data flown in November 2020 from the North Dakota State Water Commission.

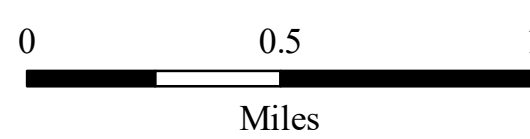
ROAD CLASSIFICATION

- | | | | |
|------------------|---|-----------------|---|
| Expressway | — | Local Connector | — |
| Secondary Hwy | — | Local Road | — |
| Ramp | — | 4WD | — |
| Interstate Route | — | US Route | — |
| | — | State Route | — |



Maddock Quadrangle, North Dakota

Scale 1:24,000



Miles

Lambert Conformal Conic Projection
North American 1983 Datum
USGS 7.5 Minute Topo Map

Standard Parallel: 47° 52' 30" N, 48° 00' 0" N
NGVD 1988
Contour Interval: 5 Feet

