

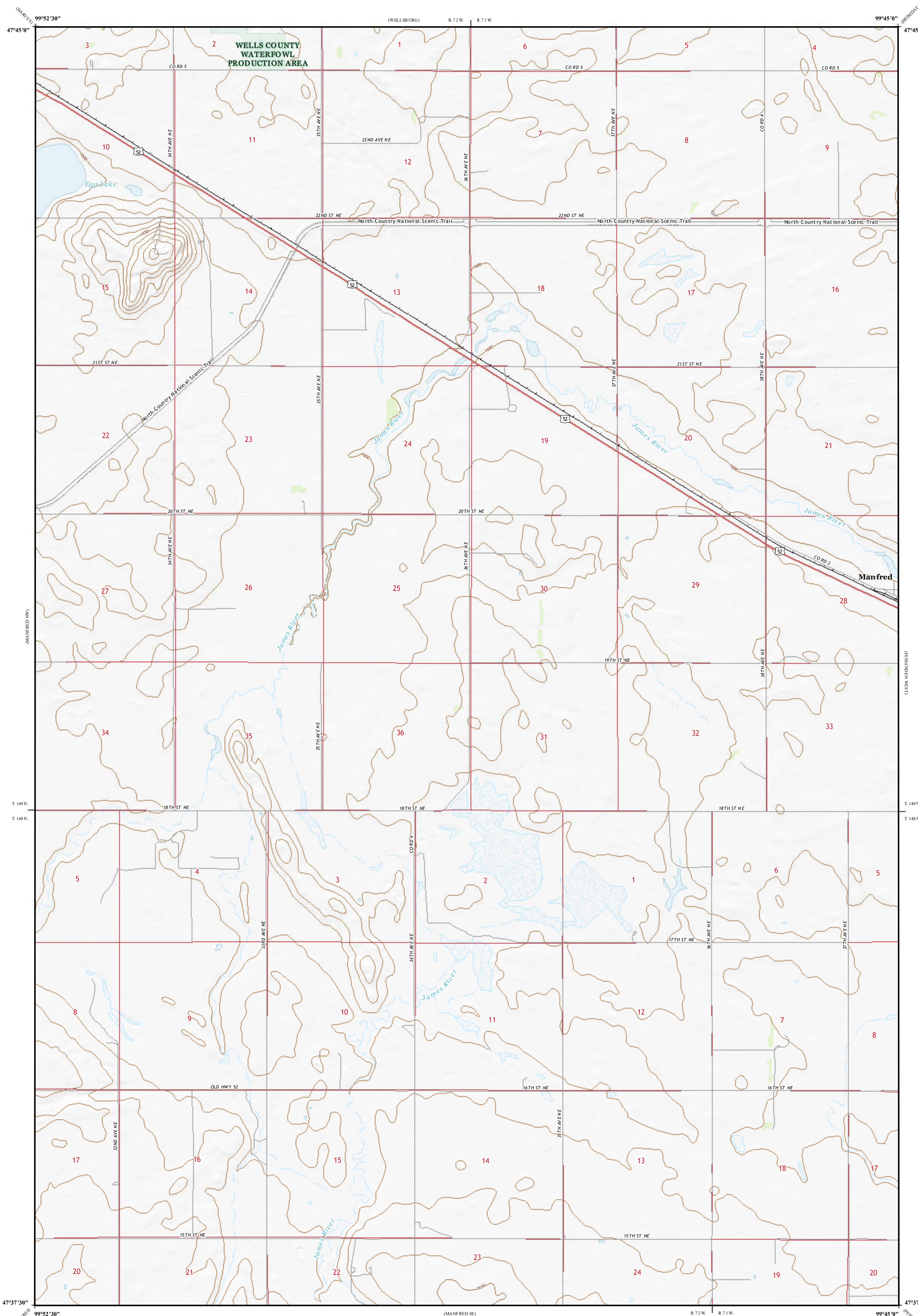
# Areas of Landslides

## Manfred Quadrangle, North Dakota

Christopher A. Maike

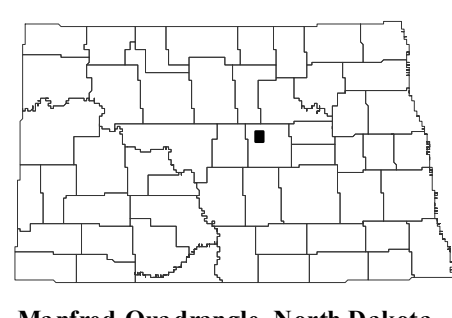
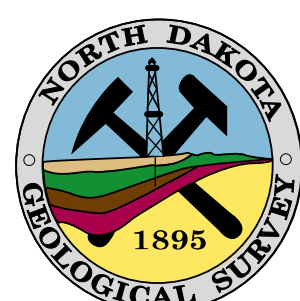
2023

Areas of landslides were investigated within this quadrangle based on a review of county historical aerial photography flown in 1959 and 1964 by the United States Department of Agriculture (USDA). Additional data sources include digital orthophotography from the USDA National Agriculture Imagery Program (NAIP) flown in September 2021 and the North Dakota Geological Survey LiDAR Map Series, which compiles raw data flown in October 2020 to April 2021 from the North Dakota State Water Commission. From this investigation, no landslides were mapped within the quadrangle.

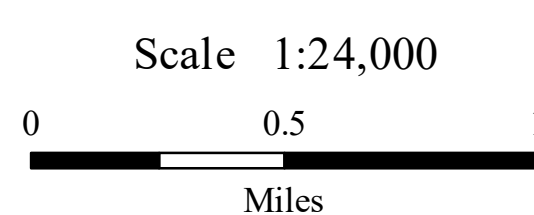


### ROAD CLASSIFICATION

- Expressway
- Secondary Hwy
- Ramp
- Interstate Route
- Local Connector
- Local Road
- 4WD
- US Route
- State Route



Manfred Quadrangle, North Dakota



Lambert Conformal Conic Projection  
North American 1983 Datum  
USGS 7.5 Minute Topo Map

Standard Parallels: 47°37'30"N, 47°45'0"N  
NGVD 1988  
Contour Interval 10 Feet

