

Areas of Landslides

Claire City NW Quadrangle, North Dakota

Levi D. Moxness

2023

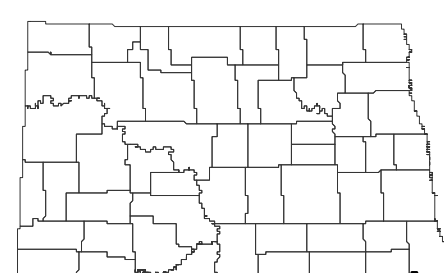
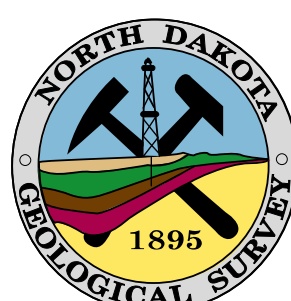
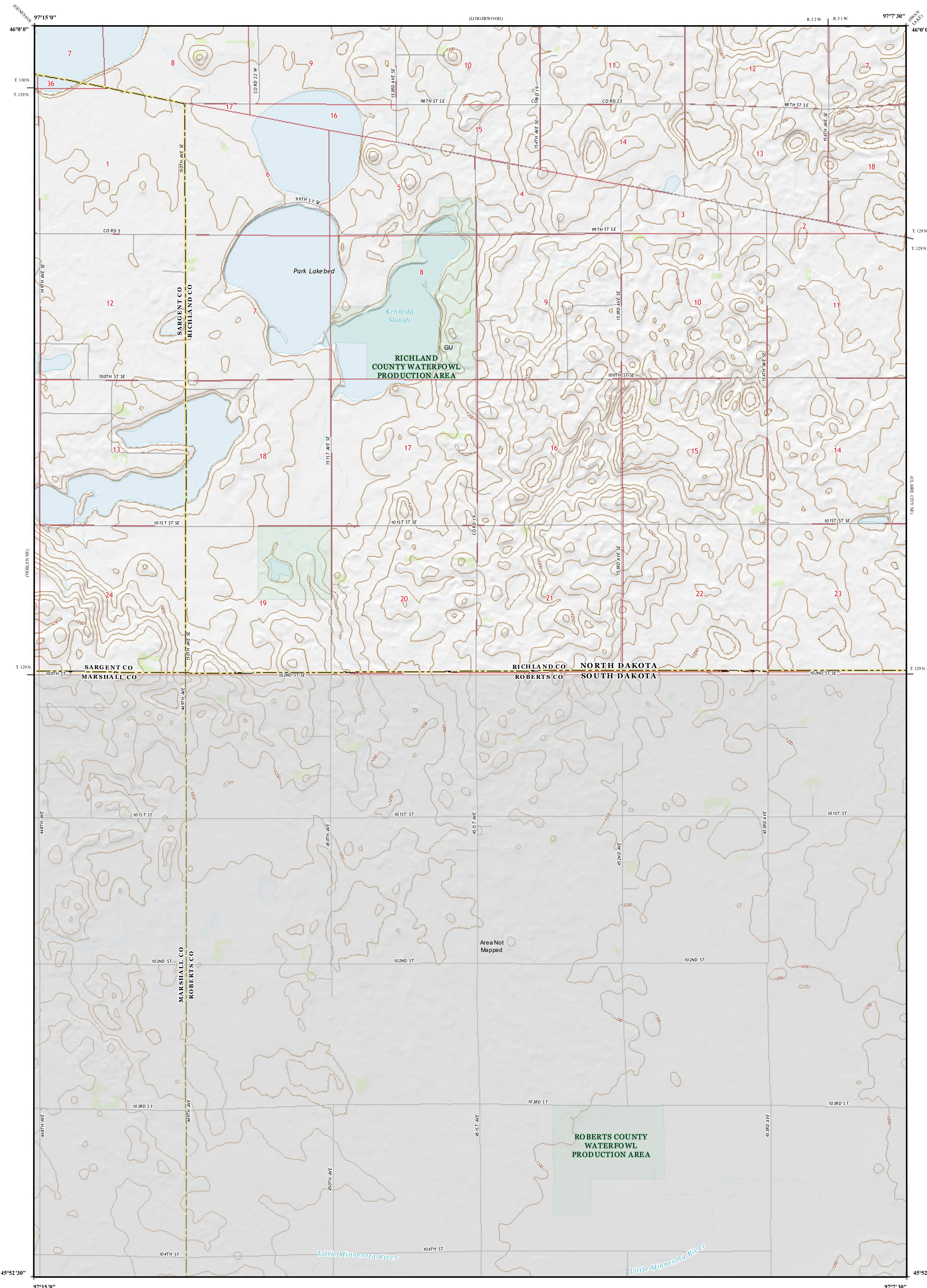
UNIT DESCRIPTIONS

- Geology Undifferentiated
- Area Not Mapped

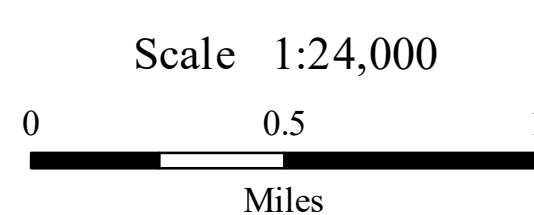
Areas of landslides were investigated within this quadrangle based on a review of county historical aerial photography flown in August 1952 by the United States Department of Agriculture (USDA). Additional data sources include digital orthophotography from the USDA National Agriculture Imagery Program (NAIP) flown in September 2021 and the North Dakota Geological Survey LiDAR Map Series, which compiles raw data flown in June 2019 from the North Dakota State Water Commission. From this investigation, no landslides were mapped within the quadrangle.

ROAD CLASSIFICATION

- | | | | |
|---------------|------------------|-----------------|----------|
| Expressway | | Local Connector | |
| Secondary Hwy | | Local Road | |
| Ramp | | 4WD | |
| | Interstate Route | | US Route |
| | State Route | | |



Claire City NW Quadrangle, North Dakota



Lambert Conformal Conic Projection
North American 1983 Datum
USGS 7.5 Minute Topo Map

Standard Parallel: 45°52'30"N, 46°00'0"N
NGVD 1988
Contour Interval 10 Feet

