

Areas of Landslides

Newark NW Quadrangle, North Dakota

Levi D. Moxness

2023

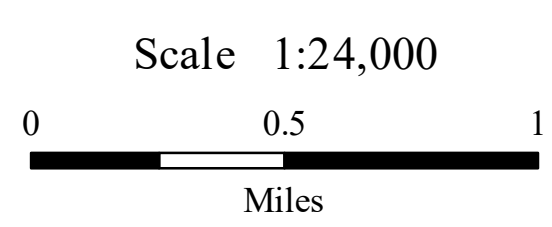
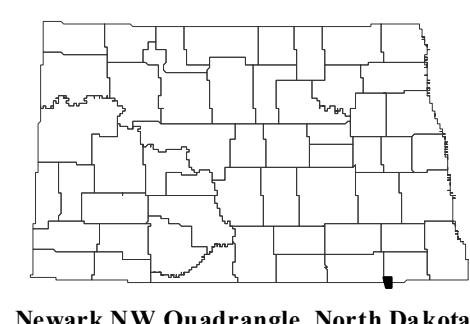
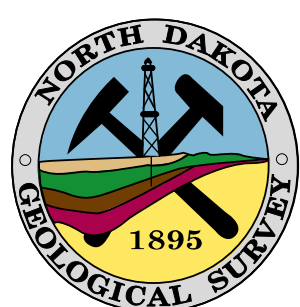
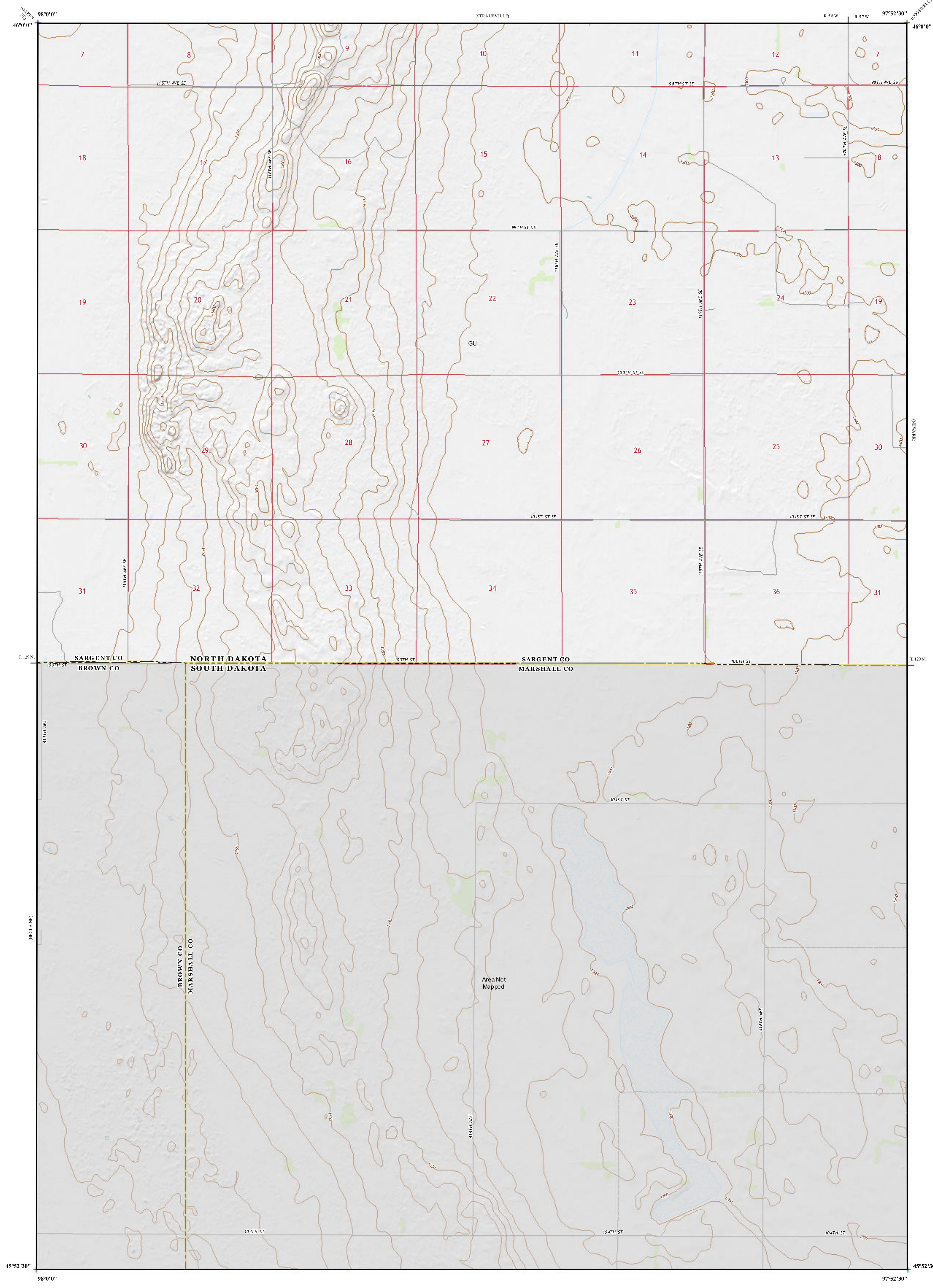
UNIT DESCRIPTIONS

- Geology Undifferentiated
- Area Not Mapped

Areas of landslides were investigated within this quadrangle based on a review of county historical aerial photography flown in September 1960 by the United States Department of Agriculture (USDA). Additional data sources include digital orthophotography from the USDA National Agriculture Imagery Program (NAIP) flown in September 2021 and the North Dakota Geological Survey LiDAR Map Series, which compiles raw data flown in December 2020 from the North Dakota State Water Commission. From this investigation, no landslides were mapped within the quadrangle.

ROAD CLASSIFICATION

- Expressway
- Secondary Hwy
- Ramp
- Interstate Route
- Local Connector
- Local Road
- 4WD
- US Route
- State Route



Lambert Conformal Conic Projection
North American 1983 Datum
USGS 7.5 Minute Topo Map

Standard Parallels 45°52'30"N, 46°00'0"N
NGVD 1988
Contour Interval 10 Feet

