

# Areas of Landslides

## Horseshoe Lake Quadrangle, North Dakota

**Christopher A. Maike**

**2023**

### UNIT DESCRIPTIONS

#### QUATERNARY SYSTEM

#### RECENT/PLEISTOCENE

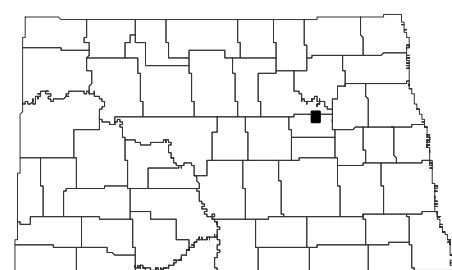
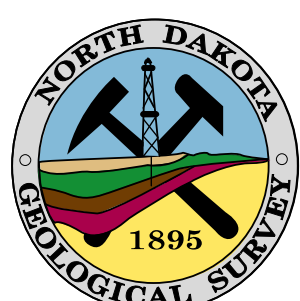
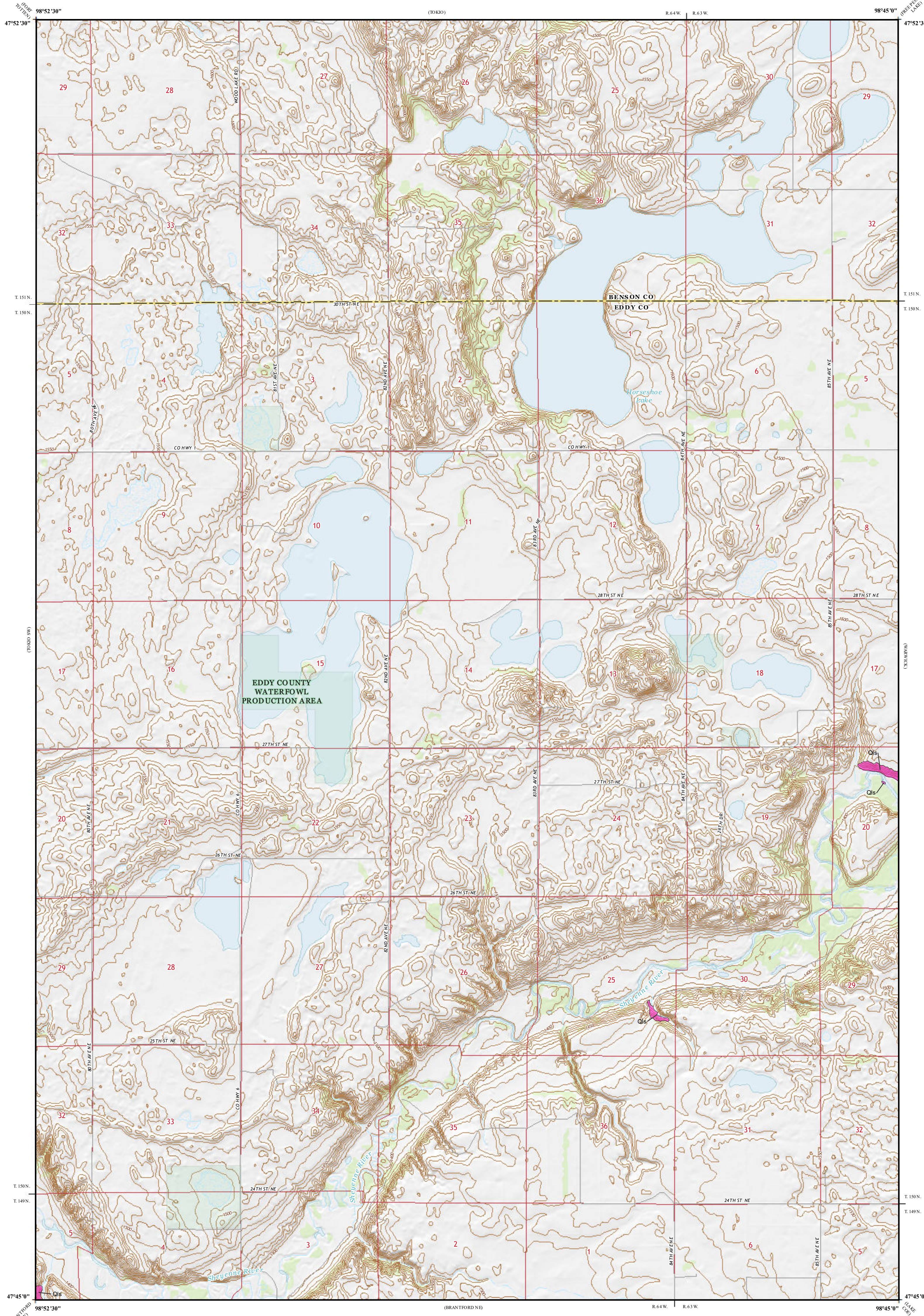
**Qls** Landslide Deposits

A mass of material that has moved downslope. Includes earth flows, slumps, and areas of soil creep.

Landslides identified on this quadrangle were mapped from stereo pairs, black and white 1:20,000 scale aerial photographs flown in 1959 and 1964 by the United States Department of Agriculture (USDA). Additional data sources include digital orthophotography from the USDA National Agriculture Imagery Program (NAIP) flown in September 2021 and the North Dakota Geological Survey LiDAR Map Series, which compiles raw data flown in April 2021 from the North Dakota State Water Commission.

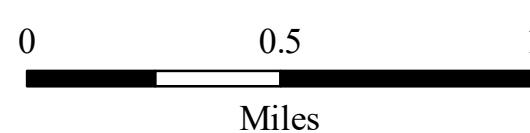
#### ROAD CLASSIFICATION

- |               |                  |                 |          |
|---------------|------------------|-----------------|----------|
| Expressway    |                  | Local Connector |          |
| Secondary Hwy |                  | Local Road      |          |
| Ramp          |                  | 4WD             |          |
|               | Interstate Route |                 | US Route |
|               | State Route      |                 |          |



Horseshoe Lake Quadrangle, North Dakota

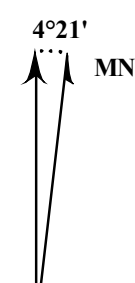
Scale 1:24,000



Miles

Lambert Conformal Conic Projection  
North American 1983 Datum  
USGS 7.5 Minute Topo Map

Standard Parallels: 47°45'0"N, 47°52'30"N  
NGVD 1988  
Contour Interval 10 Feet



2019 Magnetic North  
Declination at Center of Sheet