

# Areas of Landslides

## Kloten NW Quadrangle, North Dakota

**Christopher A. Maike**

**2023**

### UNIT DESCRIPTIONS

#### QUATERNARY SYSTEM

#### RECENT/PLEISTOCENE

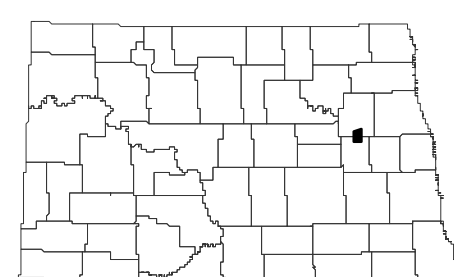
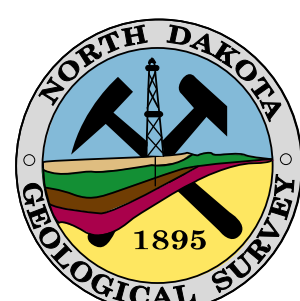
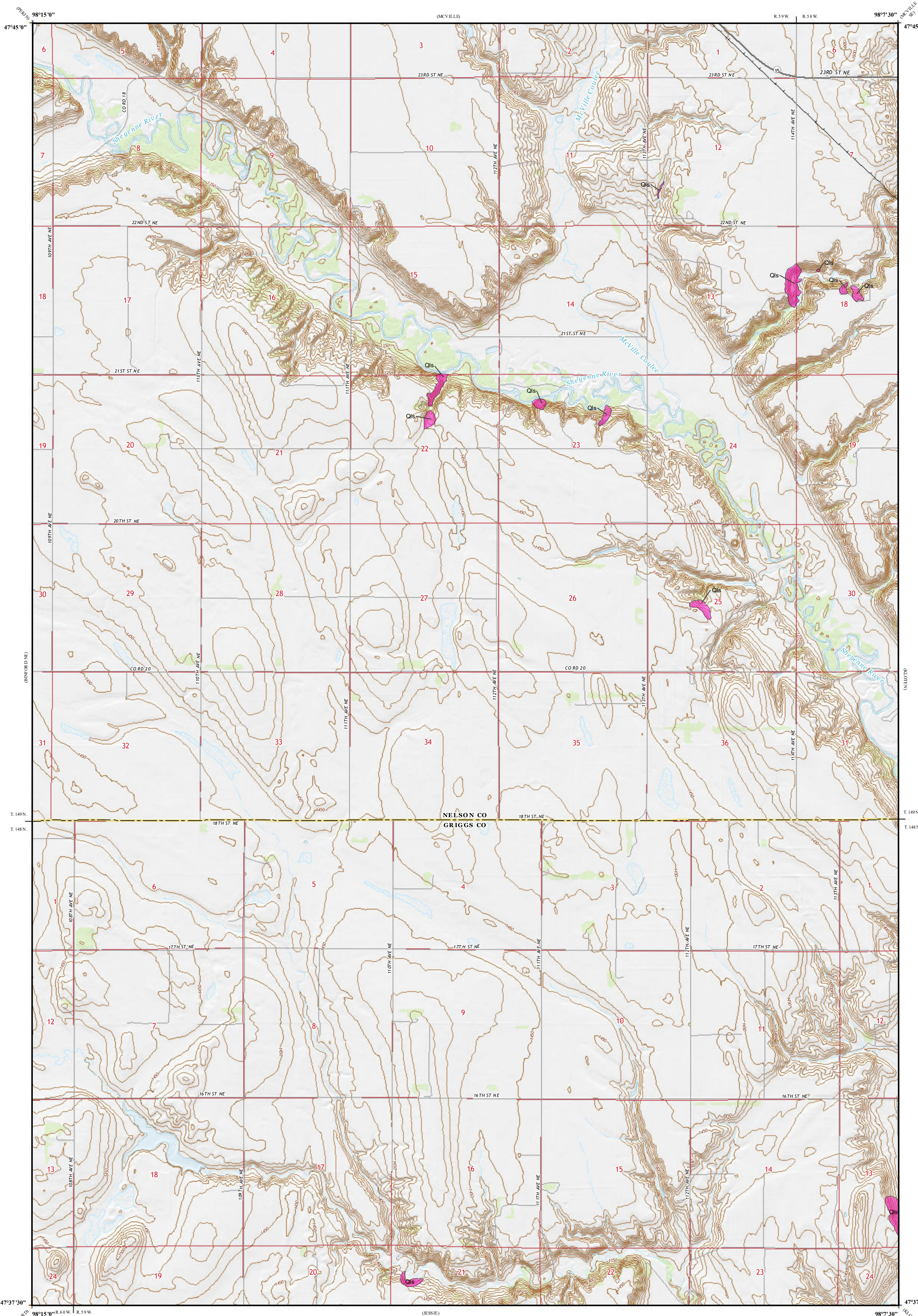
#### Qls Landslide Deposits

A mass of material that has moved downslope. Includes earth flows, slumps, and areas of soil creep.

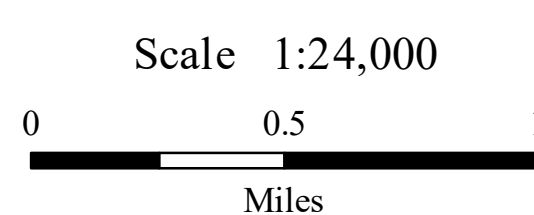
Landslides identified on this quadrangle were mapped from stereo pairs, black and white 1:20,000 scale aerial photographs flown in 1952 and 1959 by the United States Department of Agriculture (USDA). Additional data sources include digital orthophotography from the USDA National Agriculture Imagery Program (NAIP) flown in October 2021 and the North Dakota Geological Survey LiDAR Map Series, which compiles raw data flown in October 2020 from the North Dakota State Water Commission.

#### ROAD CLASSIFICATION

- |                  |   |                 |   |
|------------------|---|-----------------|---|
| Expressway       | — | Local Connector | — |
| Secondary Hwy    | — | Local Road      | — |
| Ramp             | — | 4WD             | — |
| Interstate Route | — | US Route        | — |
|                  |   | State Route     | — |



Kloten NW Quadrangle, North Dakota



Lambert Conformal Conic Projection  
North American 1983 Datum  
USGS 7.5 Minute Topo Map

Standard Parallels: 47°37'30"N, 47°45'0"N  
NGVD 1988  
Contour Interval 10 Feet

