

Areas of Landslides

McVile Quadrangle, North Dakota

Christopher A. Maike

2023

UNIT DESCRIPTIONS

Geology Undifferentiated

QUATERNARY SYSTEM

RECENT/PLEISTOCENE

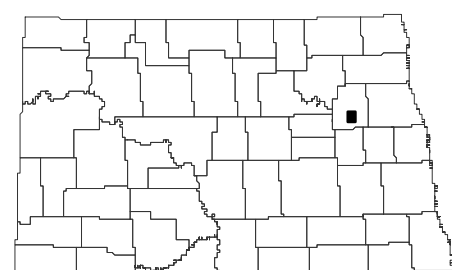
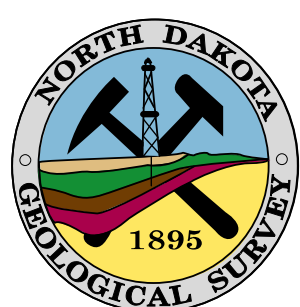
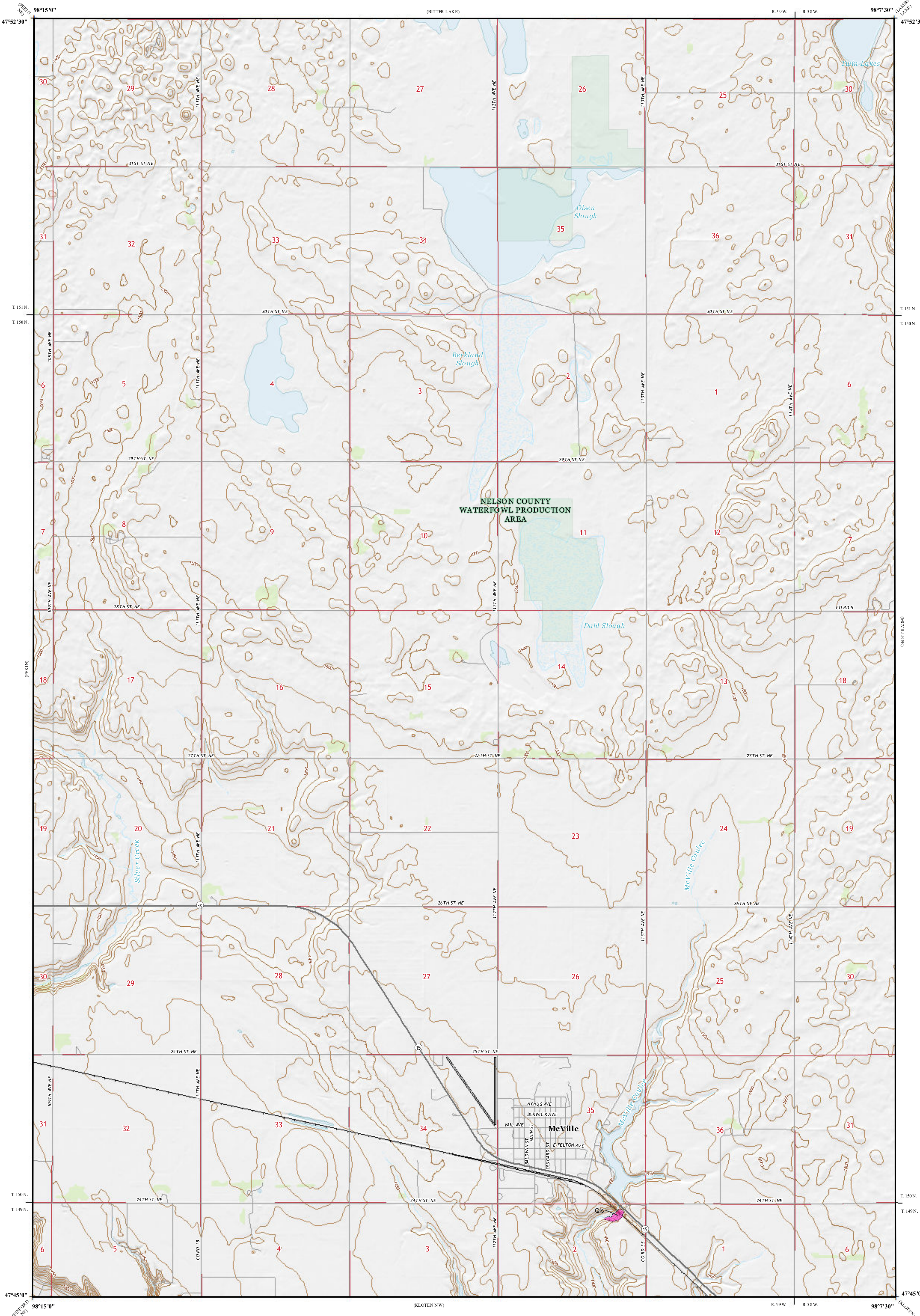
Qs Landslide Deposits

A mass of material that has moved downslope. Includes earth flows, slumps, and areas of soil creep.

Landslides identified on this quadrangle were mapped from stereo pairs, black and white 1:20,000 scale aerial photographs flown in 1952 by the United States Department of Agriculture (USDA). Additional data sources include digital orthophotography from the USDA National Agriculture Imagery Program (NAIP) flown in October 2021 and the North Dakota Geological Survey LiDAR Map Series, which compiles raw data flown in October 2020 from the North Dakota State Water Commission.

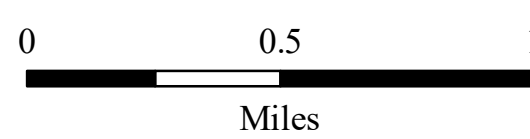
ROAD CLASSIFICATION

Expressway		Local Connector	
Secondary Hwy		Local Road	
Ramp		4WD	



McVile Quadrangle, North Dakota

Scale 1:24,000



Lambert Conformal Conic Projection
North American 1983 Datum
USGS 7.5 Minute Topo Map

Standard Parallels: 47°45'0"N, 47°52'30"N
NGVD 1988
Contour Interval 10 Feet

