

Areas of Landslides

South of Wahpeton Quadrangle, North Dakota

**Benjamin C. York
&
Levi D. Moxness**

2022

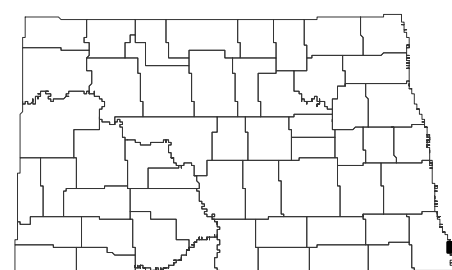
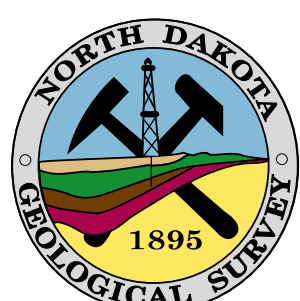
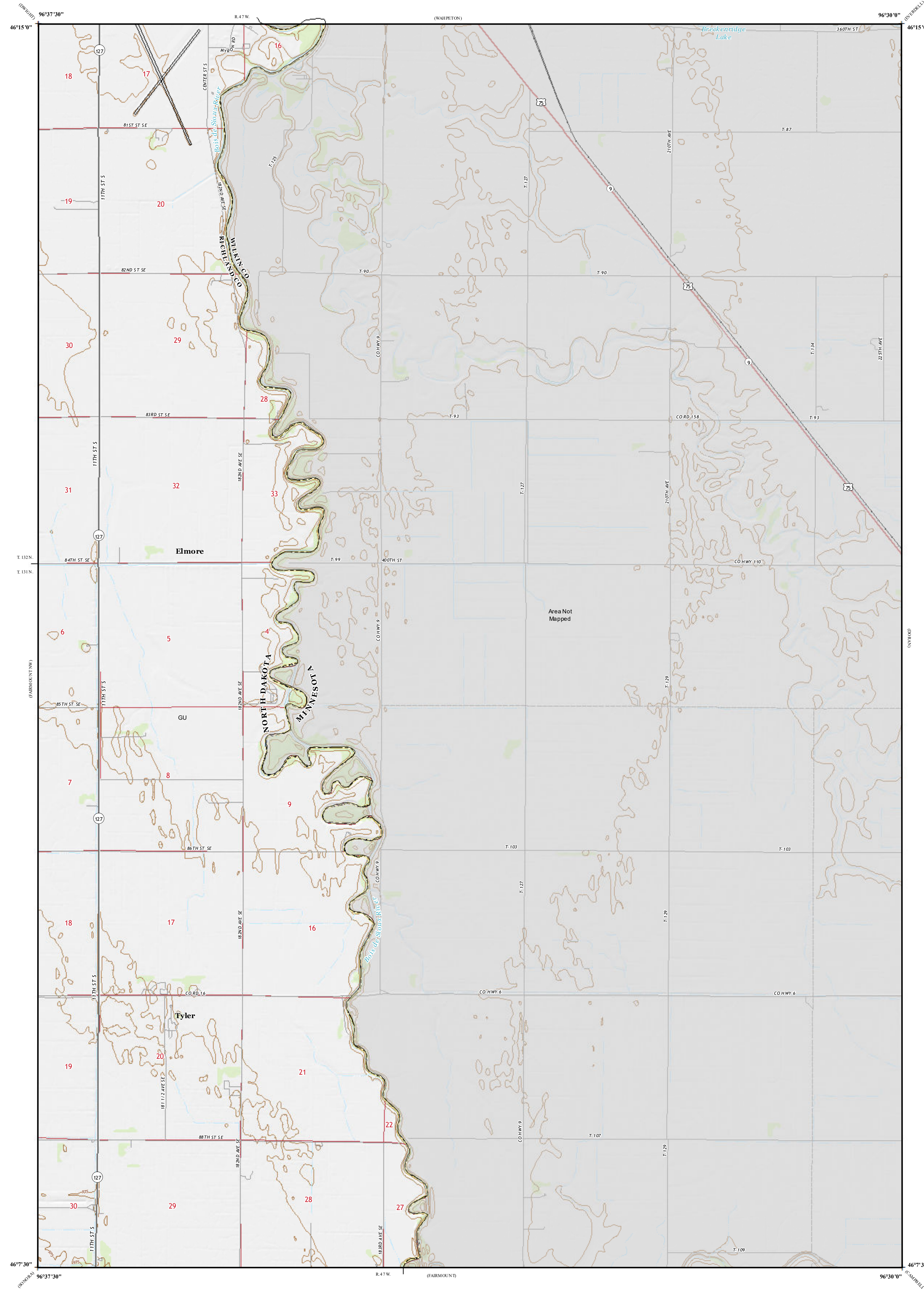
UNIT DESCRIPTIONS

- Geology Undifferentiated
- Area Not Mapped

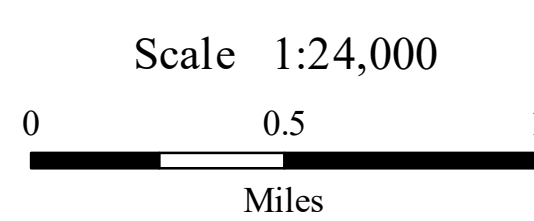
Areas of landslides were investigated within this quadrangle based on a review of county historical aerial photography flown in August 1952 by the United States Department of Agriculture (USDA). Additional data sources include digital orthophotography from the USDA National Agriculture Imagery Program (NAIP) flown in August 2021 and the North Dakota Geological Survey LiDAR Map Series, which compiles raw data flown in November 2020 to April 2021 from the North Dakota State Water Commission. From this investigation, no landslides were mapped within the quadrangle.

ROAD CLASSIFICATION

- Expressway Local Connector
- Secondary Hwy Local Road
- Ramp 4WD
- Interstate Route US Route State Route



South of Wahpeton Quadrangle, North Dakota



Lambert Conformal Conic Projection
North American 1983 Datum
USGS 7.5 Minute Topo Map

Standard Parallel: 46°7'30"N, 46°15'0"N
NGVD 1988
Contour Interval: 5 Feet

