

# Surface Geology

## Carrington West Quadrangle, North Dakota

**John P. Bluenle**  
2006

### EXPLANATION

#### QUATERNARY SYSTEM

##### RECENT

##### OAHE FORMATION

**Qor** Alluvium

River and stream sediment. Dark obscurely bedded clay and silt (mainly overbank sediment); generally overlying cross-bedded sand (channel sediment); on plains of modern streams.

**Qos** Pond and Slough Sediment

Dark, obscurely bedded clay and silt; in modern ephemeral ponds.

##### PLEISTOCENE

##### COLEHARBOR GROUP

##### Sand and Gravel Facies

River sediment. Moderately well-sorted, cross bedded sand and plane-bedded gravel, including sediment of meltwater rivers.

**Qcrf** Uncollapsed Flat Fluvial Plains

Flat-bedded sediment of nearly level plains and river terraces, commonly with braided channel scars, oxbows, and other relict markings; relief of 1 to 10 feet.

**Qcic** Ice-Contact Deposits

Mainly gravel and sand with cobbles and boulders common; inclusions of glacial sediment common; local relief up to 50 feet; eskers and kames.

##### Till Facies

Glacial sediment. Unsorted, unbedded mixture of angular, subangular, and rounded blocks of rock, gravel, and sand, generally in a stiff matrix of silt and clay; yellowish-brown to olive-gray in exposures depending on weathering intensity; contains discontinuous lenses of gravel and sand.

**Qccg** Nearly Flat To Gently Undulating Surface

poorly integrated drainage; relief generally less than 15 feet; ice desintegration features in places; washboard ridges in places; longitudinal, drumlin-like ridges in places.

**Qct** Ice-Thrust Masses

Glacial sediment that has been draped over glacial or preglacial sediment or rock that has been sheared up into thrust slabs or folds near the ice margin; hilly areas with intense internal linearity; local concentrations of gravel and boulders; local relief may exceed 150 feet.

#### Geologic Symbols

— Known contact between two geologic units

----- Scarp

— Transverse Ridge

— Longitudinal Ridge

#### Other Features

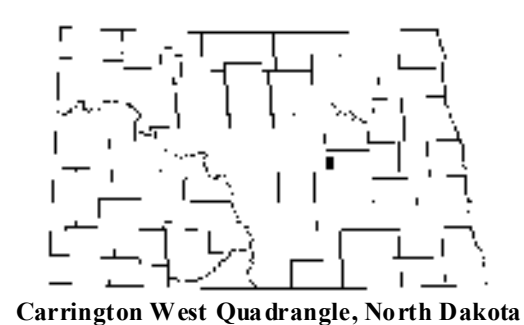
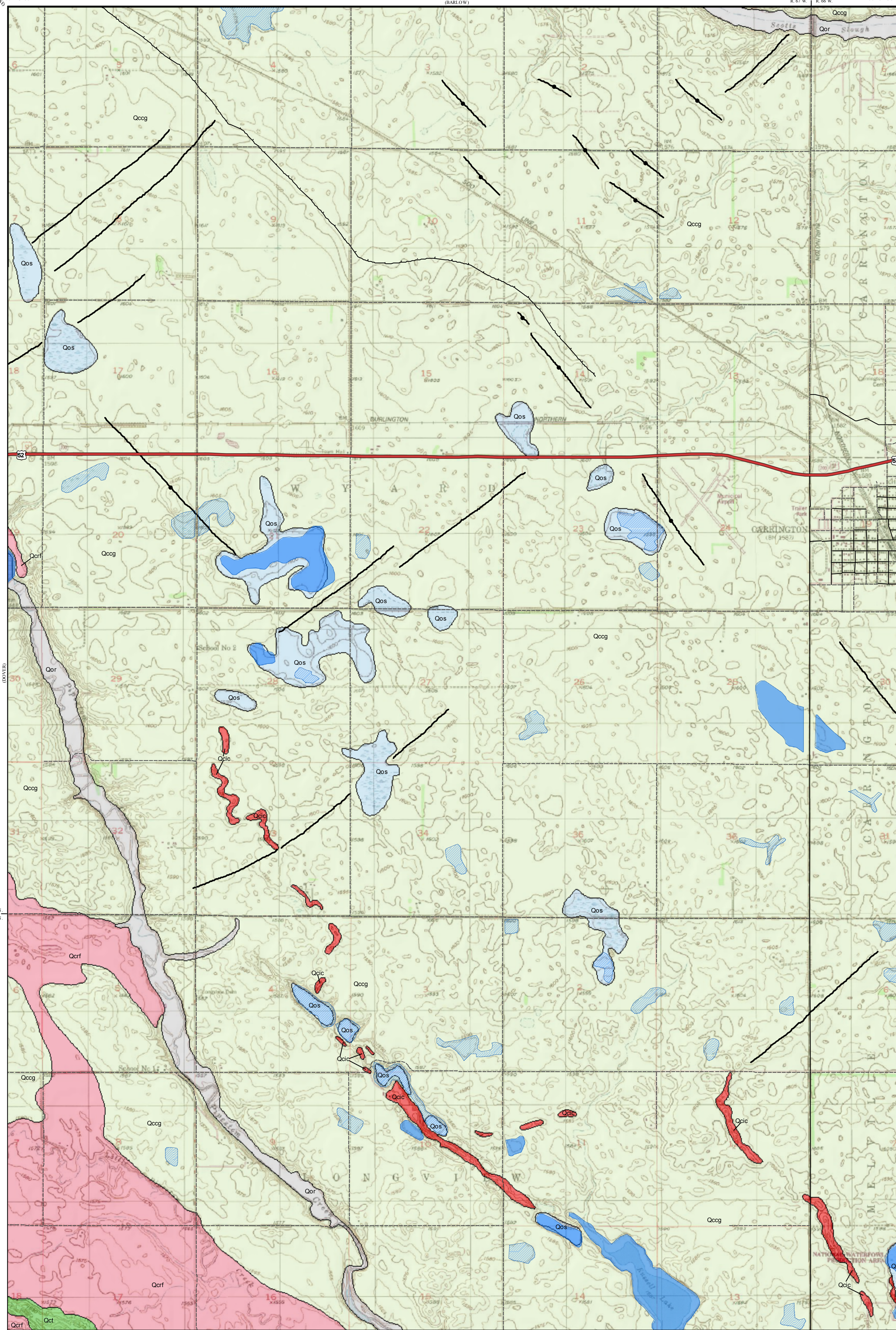
Water

Water - Intermittent

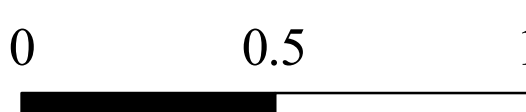
US Highway

Paved Road

Unpaved Road



Scale 1:24,000



Miles

Lambert Conformal Conic Projection Standard Parallels 47° 22' 30" and 47° 30' 00"

1927 North American Datum NGVD 1929

USGS 7.5 Minute Topographic Map - Contour Interval 5 Feet

Roads and Hydrologic Layers Rectified to 2003 NAIP Digital Orthophoto

