

Surface Geology

Camp Grafton Quadrangle, North Dakota

Lorraine A. Manz

2005

EXPLANATION

Org Fill
Raised road grade and construction fill

Qb Borrow Area

QUATERNARY SYSTEM

OAHE FORMATION

Qop Pond and Slough Sediment
Clay, silt, and organic debris; obscurely bedded; dark colored; deposited in modern ponds and sloughs.
All map areas not coded are (Qop) pond and slough sediments.

Qu Currently Unmappable
Inundated since 1993.

COLEHARBOR GROUP

LAKE SEDIMENT

Qcs Shoreline Sediment (Holocene and Wisconsinan)
Sand and gravel; moderately to well sorted; plane bedded and cross-bedded.

Qclt Nearshore Sediment (Holocene and Wisconsinan)
Flat bedded, thinly laminated silt and clay, overlying glacial sediment.

GLACIAL SEDIMENT

Qccl Collapsed Glacial Topography
Unsorted clay, silt, sand, gravel, and pebbles, with a few cobbles and boulders; flat to gently undulating (<10' local relief) topography; trace disintegration structures visible on air photos.

Qccu Collapsed Glacial Topography
Unsorted clay, silt, sand, gravel, and pebbles, with abundant cobbles and boulders; undulating topography (10' - 20' local relief); moderately well-defined disintegration structures visible on air photos.

Qcew Wave-Eroded Glacial Sediment
Thin veneer of poorly to moderately sorted clay, silt, and sand, with some pebbles and cobbles overlying undisturbed glacial sediment.

Qcre Eskers and Kames
Ridges and hills of poorly to well-sorted sand and gravel intermixed with cobbles, boulders, and till. Crossbedding, laminae, and soft-sediment deformation structures common. Glaciofluvial material.

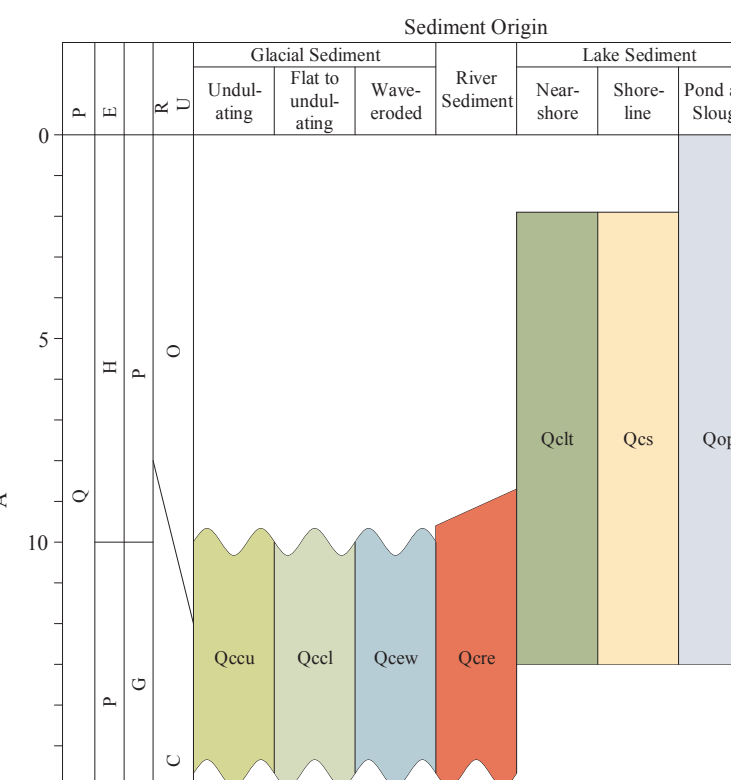
Geologic Symbols

- Geologic contact
- Partially buried meltwater channel
- ~ Transverse ridges on till: mainly washboard moraine
- ⊗ Gravel Pit

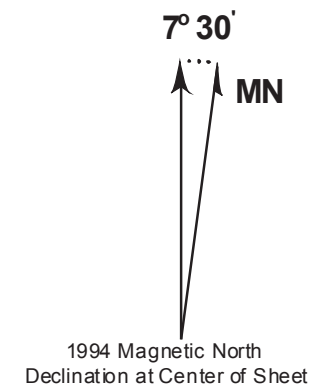
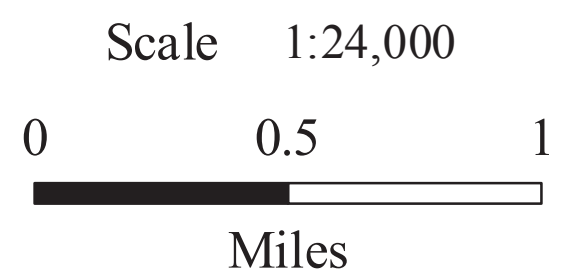
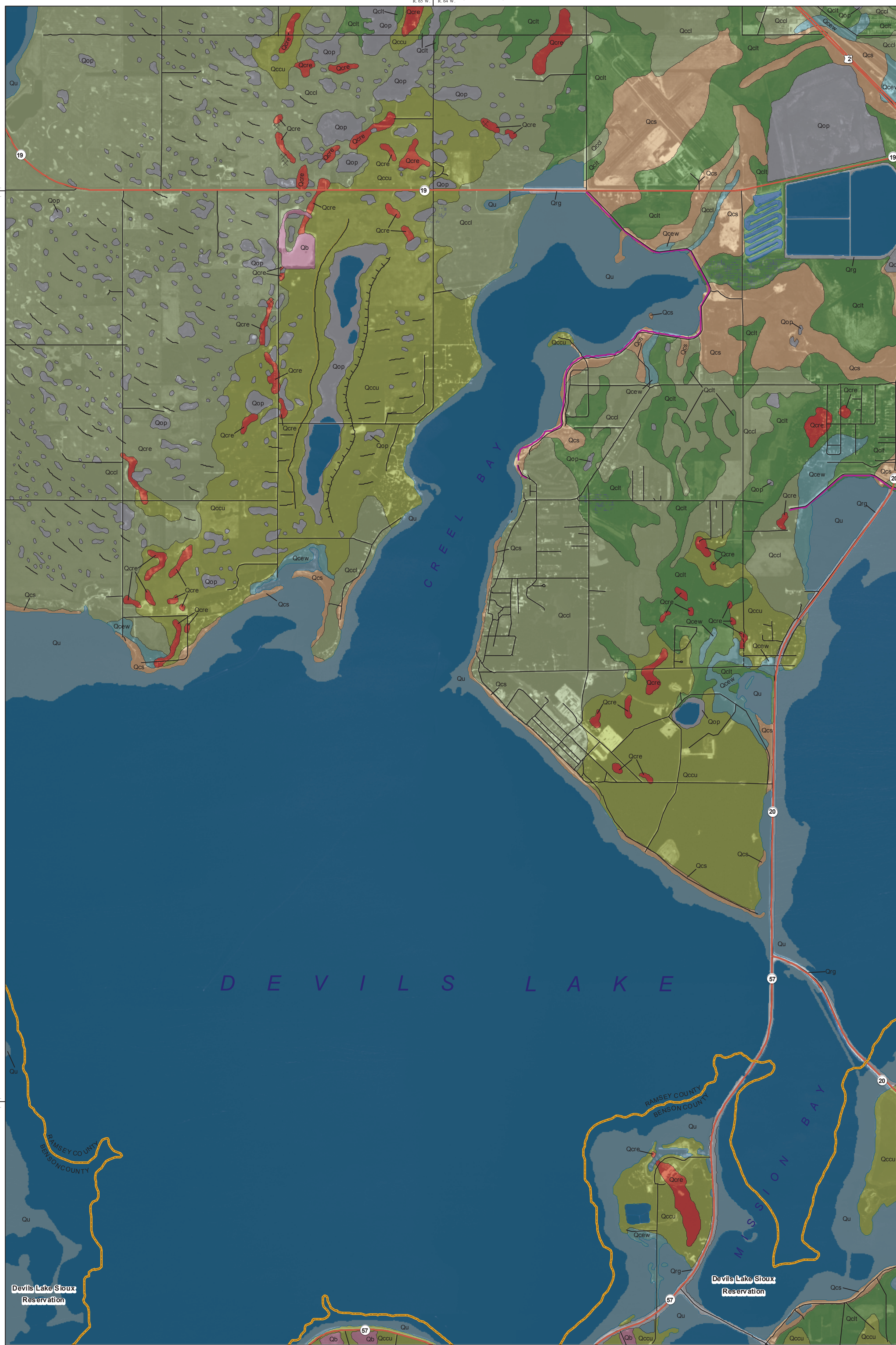
Other Features

- Water
- Marsh
- Existing Levee
- County Boundary
- Reservation Boundary
- U. S. Highway
- State Highway
- Paved Road

Correlation of Map Units



This geologic map was funded in part by the USGS National Cooperative Geologic Mapping Program.



Lambert Conformal Conic Projection 1927 North American Datum
Standard Parallels 48° 00' 00" and 48° 07' 30"
Aerial Image NAIP 2005

Camp Grafton Quadrangle, North Dakota