

Surface Geology

Dickinson South Quadrangle, North Dakota

Edward C. Murphy
2005

EXPLANATION

QUATERNARY SYSTEM

RECENT

Manmade Features or Deposits

Qlf Landfill Deposits

Engineered land fill deposits and common garbage dumps.

Qa1 Modern Alluvial Deposits

Sand, silt, and clay deposited by modern streams and rivers. Gravelly where derived from coarse, older alluvial deposits. Includes river channel and floodplain sediments. Contains numerous truncated meanders and minor terraces. Local similarity to the Sentinel Butte Formation makes thickness determinations difficult; generally less than 20 feet thick.

Qa2 Alluvial Deposits

Poorly sorted sand, silt, clay, and gravel. Forms planar terrace deposits, elevated relative to modern streams, that are dissected by modern alluvial deposits. Fluvial (channel and floodplain) sediment generally less than 30 feet thick.

TERTIARY SYSTEM OLIGOCENE

WHITE RIVER GROUP

Tc CHADRON FORMATION

Chalky Buttes Member

White to yellowish gray conglomeratic sandstone.

South Heart Member

Grayish tan to gray, swelling claystone and mudstone. Generally silicified within the map area and locally pebbly.

EOCENE/PALEOCENE

Tgv GOLDEN VALLEY FORMATION

Camels Butte Member

Yellowish brown, micaceous, illitic and montmorillonitic siltstone, claystone, and sandstone.

Bear Den Member

Light gray to bright white kaolinic strata often divisible into 3 stratigraphic units: basal gray zone, middle orange zone, and a thin upper carbonaceous zone. Often capped by a silicious bed (Taylor Bed) in this area.

PALEOCENE

FORT UNION GROUP

Tsb SENTINEL BUTTE FORMATION

Gray to brown, variably lithified siltstone, mudstone, claystone, sandstone, and lignite. Calcite-cemented sandstone and mudstone concretions are common, as are siderite nodules. In this area, the contact with the Golden Valley Formation appears conformable and gradational. Fluvial, lacustrine, and swamp sediment that form gentle, vegetated slopes. Only the upper 200 feet of the formation is exposed.

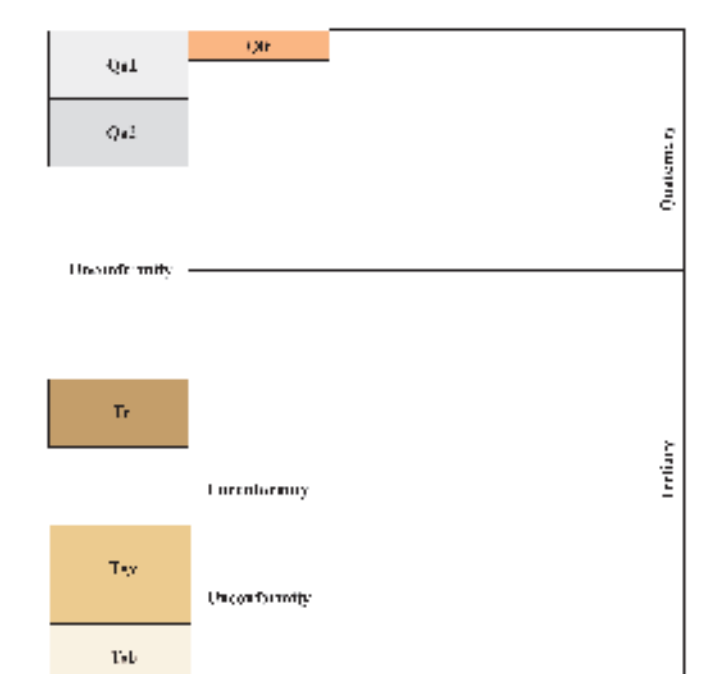
Geologic Symbols

- Known contact between two geologic units
- - - - Approximate contact between two geologic units

Other Features

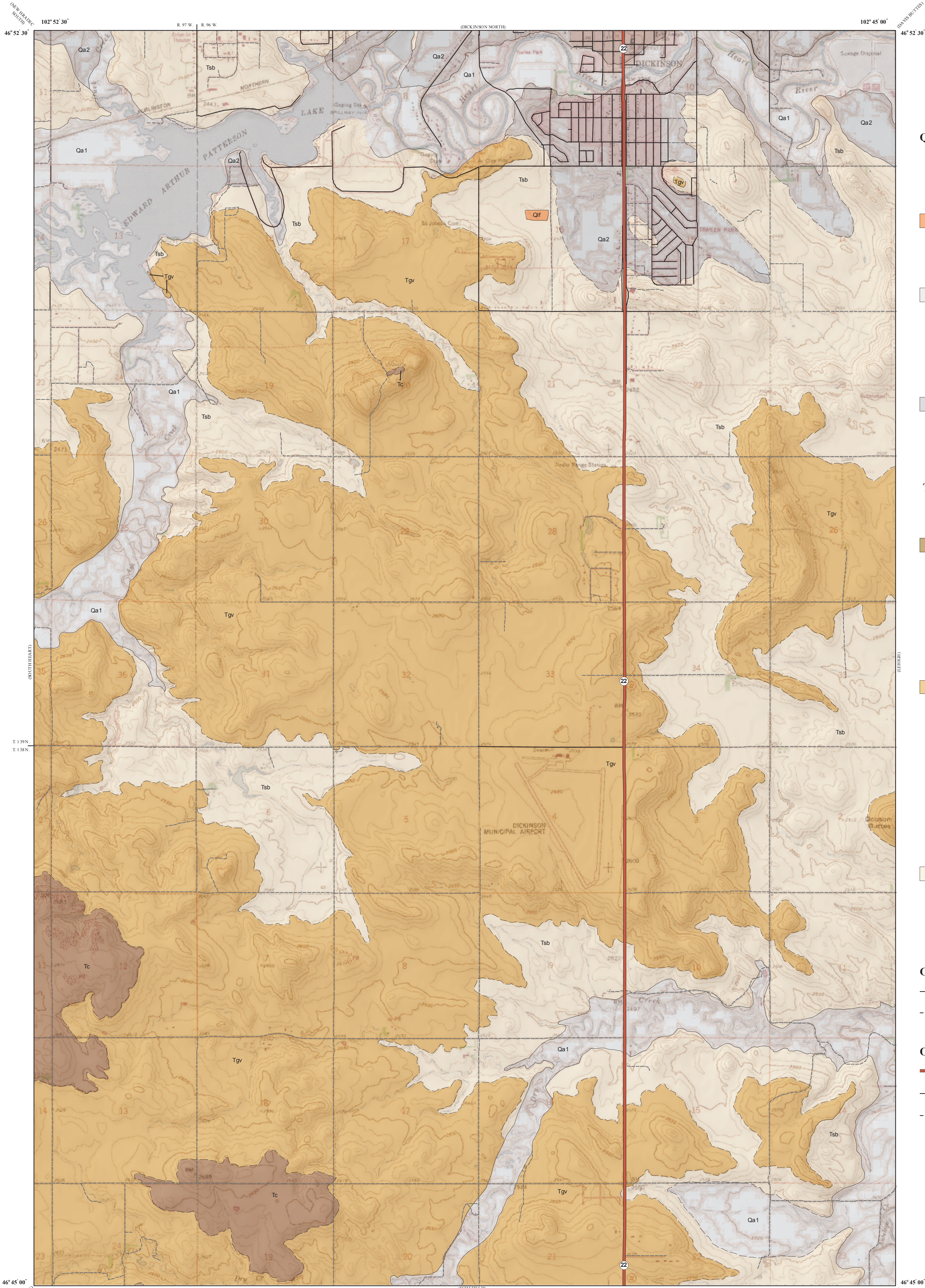
- State Highway
- Paved Road
- - - - Unpaved Road

Correlation of Map Units



This geologic map was funded, in part, by the USGS National Cooperative Geologic Mapping Program.

Cartographic Compilation: Elroy L. Kadmas

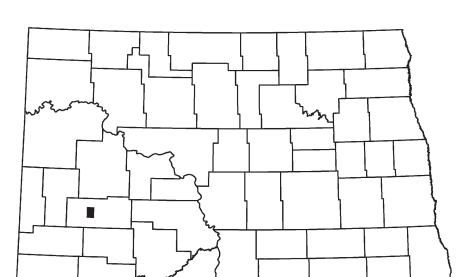
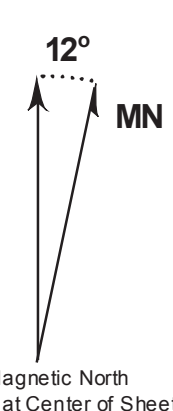


Scale 1:24,000



Miles

Lambert Conformal Conic Projection Standard Parallels 46° 45' 00" and 46° 52' 30"
1927 North American Datum NGVD 1929
USGS 7.5 Minute Topographic Map Contour Interval 10 Feet
Road Layer Recified to 2003 NAIP Digital Orthophoto



Dickinson South Quadrangle, North Dakota