

Surface Geology

Peterson Lake Quadrangle, North Dakota

John P. Bluemle
2008

EXPLANATION

QUATERNARY SYSTEM

PLEISTOCENE

COLEHARBOR GROUP

Silt Facies

Offshore lake sediment consisting of laminated silt and clay of glacier-dammed lakes.

Qcoe Elevated Lake Plain

Near-shore sand and offshore lake silt and clay; largely flat areas, but in places the margins of the lake plains are slightly raised and slope to a flatter central area.

Sand and Gravel Facies

River sediment. Moderately well-sorted, cross bedded sand and plane-bedded gravel, including sediment of meltwater rivers.

Qcrf Flat Fluvial Plains

Flat-bedded sediment of nearly level plains and river terraces, commonly with braided channel scars, oxbows, and other relict markings; relief of 1 to 10 feet.

Qcrf(u) Flat Fluvial Plains Upper

Is an upper, discrete surface of gravel surrounded by a lower level of gravel (Qcrf); it is likely that the lower level was incised by later flowing water.

Qcrh Collapsed Fluvial Plains

Faulted and contorted sediment with hilly topography; relief up to 50 feet.

Qcic Ice-contact deposits

Mainly gravel and sand with cobbles and boulders common; inclusions of glacial sediment common; local relief up to 50 feet; eskers and kames.

Till Facies

Glacial sediment. Unsorted, unbedded mixture of angular, subangular, and rounded blocks of rock, gravel, and sand, generally in a stiff matrix of silt and clay; yellowish-brown to olive-gray in exposures depending on weathering intensity; contains discontinuous lenses of gravel and sand.

Qcch Hilly Surface - Kettles

Nonintegrated drainage and abundant ice-disintegration features; linear trends rare; thick layer of till with scattered areas of gravel and sand; relief of 50 to 150 feet locally.

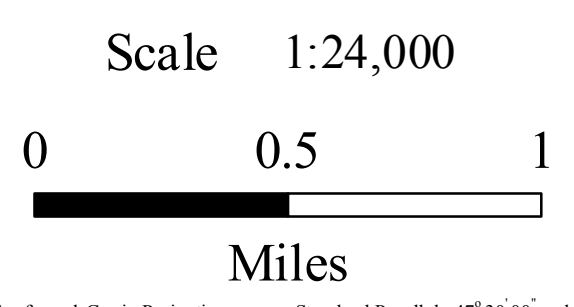
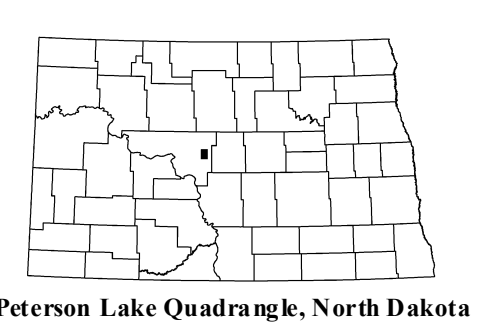
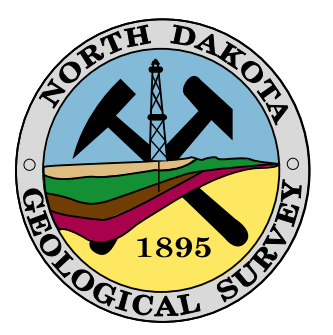
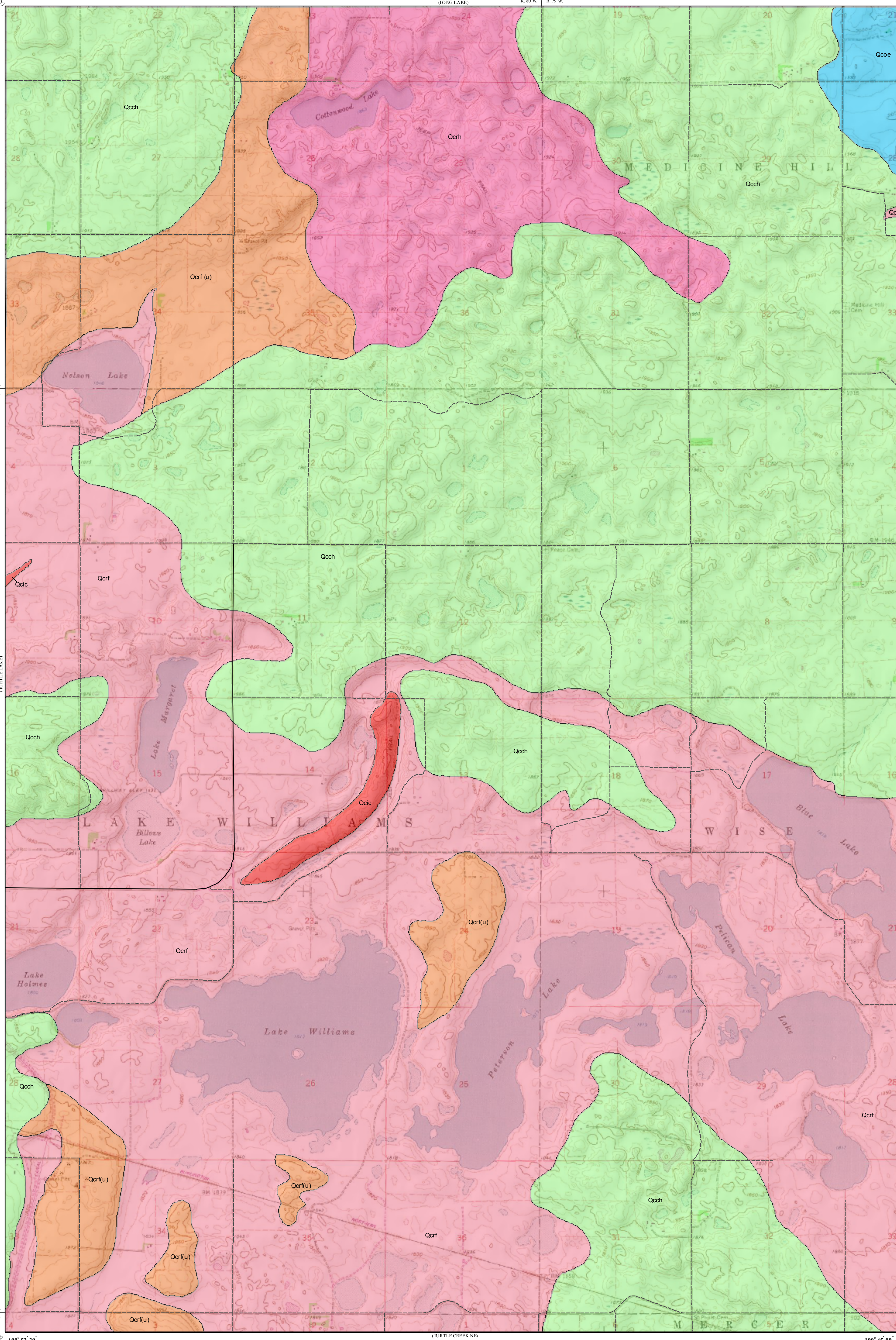
Geologic Symbols

— Known contact between two geologic units

Other Features

— Paved Road

--- Unpaved Road



Lambert Conformal Conic Projection Standard Parallels 47° 30' 00" and 47° 37' 30"
1927 North American Datum NGVD 1929
USGS 7.5 Minute Topographic Map Contour Interval 10 Feet
Road Layer Rectified to 2003 NAIP Digital Orthophoto

