

Surface Geology

Edinburg Quadrangle, North Dakota

Lorraine A. Manz

Kenneth L. Harris

2017

EXPLANATION

- Gp Gravel Pit (active)
- Sp Gravel Pit (Abandoned and/or reclaimed)

QUATERNARY SYSTEM

HOLOCENE

OAHE FORMATION

Sand, silt, clay, gravel, and organic debris; all postglacial sediment deposited on the landscape; includes river sediment, windblown sediment, lake sediment, and slopewash.

Hor Alluvium And Overbank Sediment

Sand, silt, clay and disseminated organic debris; obscurely bedded; dark colored; in many places associated with sand and gravel of older river-channel sediment; commonly more than three feet (1 meter) thick.

Hop Pond and slough sediment

Organic debris, clay, and silt; obscurely bedded; dark colored; generally more than three feet (1 meter) thick; deposited in poorly drained depressions in the landscape.

SHERACK FORMATION

Clay, silty clay, silt, and sand; thinly laminated; clayey in the central part of the lake plain and silty toward the margins; light gray where unoxidized and yellowish gray to olive-brown where oxidized; wood fragments common at the base; offshore, nearshore, shoreline and deltaic sediment deposited south of ice that occupied the Red River lowland during the Emerson Phase of Glacial Lake Agassiz.

Hso Offshore Lake Sediment

Laminated clay, clayey silt, silty clay, silt, and sand; clayey in the central part of the Red River Valley and siltier towards the margins; laminations are generally only a few millimeters thick but some of the silty beds are locally several centimeters thick; bedding deformed in places into folds a few feet high and several feet across; light gray when unoxidized and yellowish gray to olive brown when oxidized; wood fragments common in the lower few feet of the formation; as much as 100 feet (33 meters) thick.

Hsn Nearshore Sediment

Moderately well sorted; flat bedded to cross-bedded; light gray when unoxidized and yellowish gray to olive brown when oxidized; as much as 15 feet (5 meters) thick; deposited in shallow water.

Hss Shoreline Sediment

Silt, sand, and gravel; moderately to well-sorted; plane-bedded; to cross-bedded; as much as 18 feet (6 meters) thick; deposited along the shoreline of Lake Agassiz, commonly on eroded till; gravel occurs in beach ridges that are flanked by low-relief, lakeward-sloping areas of silt, sand, and wave-eroded silt; beach ridges, spits, and offshore sand bars are shown as line symbols.

Hsd Deltaic sediment - sand and gravel

Moderately well-sorted, low-angle flat-bedded to high-angle cross-bedded grayish brown and yellowish red silt, sand, and gravel deposited in fluvial channels by meltwater streams flowing onto the Elk Valley delta; flat to gently undulating surface commonly with braided channel scars, oxbows, and other relict markings; up to 70 feet (21 meters) thick.

Hsa Deltaic sediment - silt and clay

Well-sorted, light to dark grayish brown, flat bedded shaly silt and silty clay derived from tills exposed on the uplands above the Pembina escarpment and deposited on fans proximal to the mouths of rivers flowing onto the Elk River delta; very shaly; flat to gently sloping surface; up to 18 feet (6 meters) thick.

HOLOCENE AND OLDER

Qs Sediment eroded by slope processes

Sand, silt and clay; unsorted; unbedded; often pebbly; steeply sloping and eroded by mass movement and slope wash; lithology reflects the upslope material; colluvium commonly present at the base of steep slopes.

PLEISTOCENE

COLEHARBOR GROUP

The Coleharbor Group includes all sediments in North Dakota associated with deposition by Pleistocene glaciers.

GOOSE RIVER FORMATION (UNDIFFERENTIATED)

Sediment deposited by a glacier as a result of a readvance from the northwest (Riding Mountain province) of the generally retreating Late Wisconsinan ice sheet into the Red River lowland.

Qgrh Clay-loam, pebbly

Unsorted; unbedded; contains cobbles and boulders; shale pebbles abundant; as much as 80 feet (24 meters) thick; deposited by glacial ice on an ice-cored glaciated landscape; collapsed glacial sediment with more than 30 feet (10 meters) of relief.

Qgrw Clay-loam, pebbly

Unsorted; unbedded; as much as 80 feet (24 meters) thick; flat to gently undulating surface, very bouldery in places; a thin veneer of shoreline, nearshore, or offshore sediment is commonly present; glacial sediment eroded (washed) by lake waves.

Geologic Symbols

— Known contact between two geologic units

— Beach ridges and offshore bars

Established from aerial photographs; line indicates the crest of the ridge; interpreted as beach ridges or offshore bars deposited along the margin of Lake Agassiz; discernible on topographic maps and on the ground.

— Other lineations

Established from aerial photographs and LIDAR; line marks the long dimension of the feature; located in the glacial sediment and thinly veneered glacial sediment; interpreted as disintegration trenches, streamlined bedforms associated with the movement of glacial ice, or lineations of unknown origin; generally difficult to discern on topographic maps and on the ground.

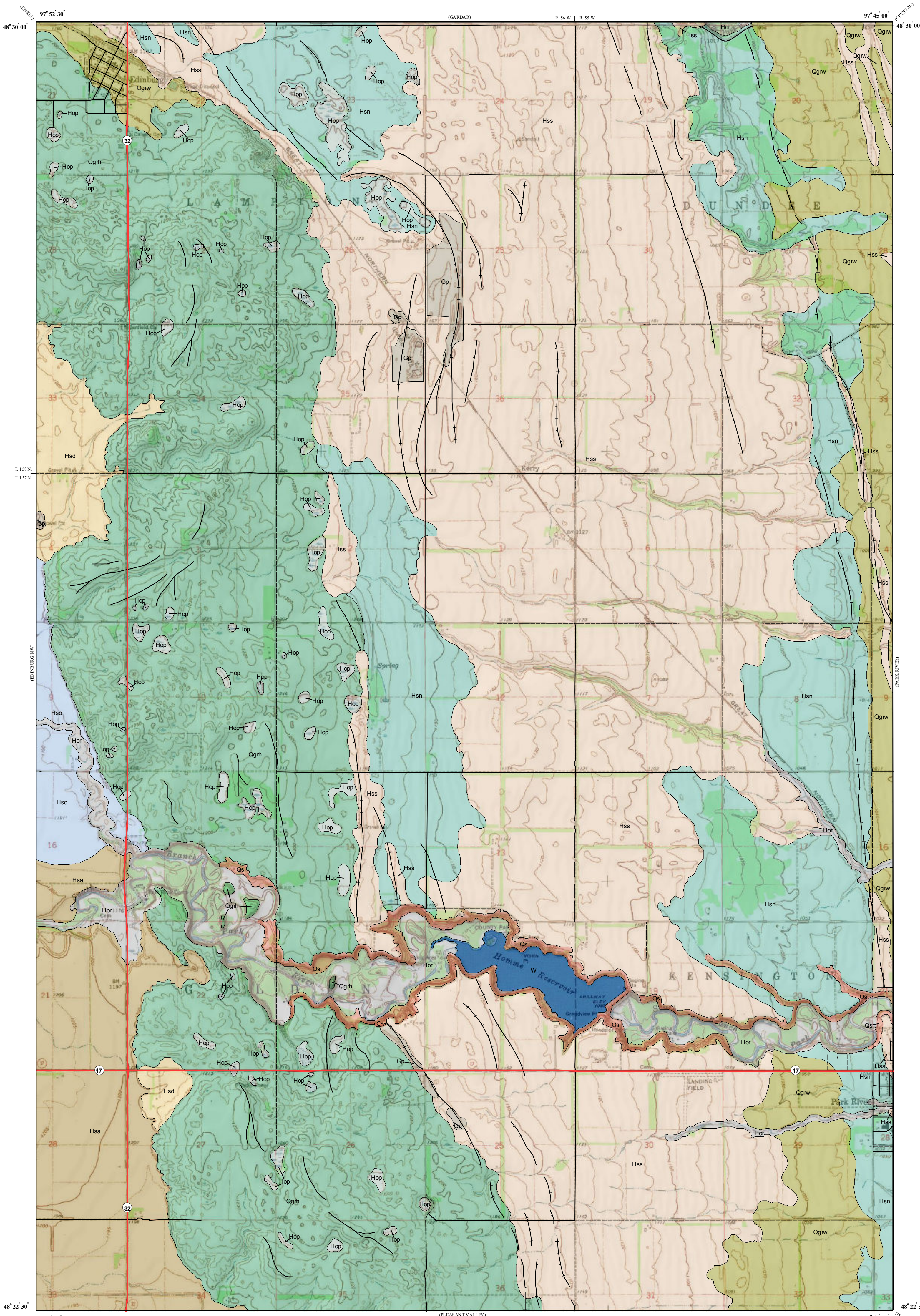
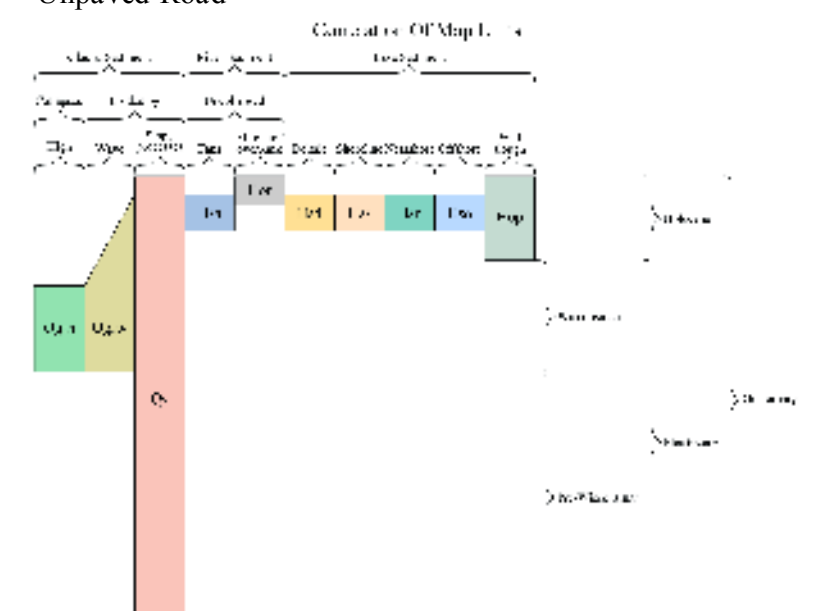
○ Spring pit

Other Features

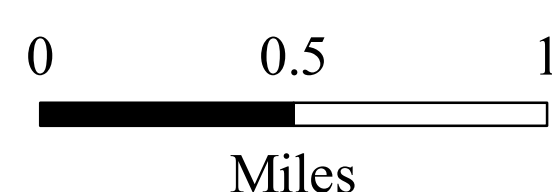
— State Highway

— Paved Road

--- Unpaved Road



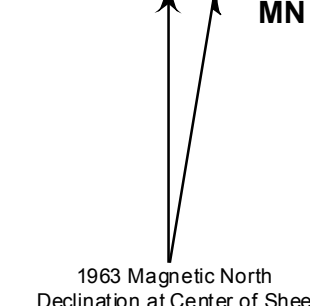
Scale 1:24,000



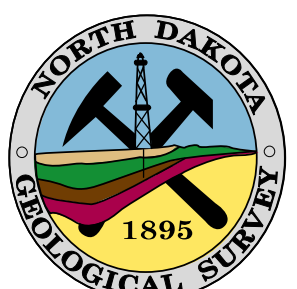
Miles

Lambert Conformal Conic Projection Standard Parallels 48° 22' 30" and 48° 30' 00"
1927 North American Datum NGVD 1929
USGS 7.5 Minute Topographic Map Contour Interval 10 Feet

9° 30'



1963 Magnetic North Declination at Center of Sheet



Edinburg Quadrangle, North Dakota