

# Surface Geology

## Petes Creek Quadrangle, North Dakota

Edward C. Murphy

2007

### EXPLANATION

#### QUATERNARY SYSTEM

##### RECENT

##### OAHE FORMATION

**Qal** Alluvium  
Brownish gray to black sand, silt, clay, and lenses of gravel; flood-plain deposits along recent drainages. Includes lower terrace deposits.

##### RECENT/PLEISTOCENE

**Qls** Landslide Deposits  
Variable mixture of strata and deposits that have slid to the base of steep slopes. Typically rotational slump blocks.

#### QUATERNARY/LATE TERTIARY SYSTEM

**Qgw** Gravel Deposits  
Gravel consists predominately of white tuffaceous sandstone and marlstone from the caprock of the Killdeer Mountains. Deposited in streams or as sediment along the flanks of the Killdeer Mountains.

#### TERTIARY SYSTEM

##### EOCENE/PALEOCENE

##### Tgv GOLDEN VALLEY FORMATION

**Camels Butte Member**  
Alternating beds of brown to grayish brown sandstone, siltstone, mudstone, claystone, and lignite.

**Bear Den Member**  
Brightly colored kaolinitic claystone, mudstone, and sandstone typically overlain by a thin siliceous bed (silerete) or lignite.

##### PALEOCENE

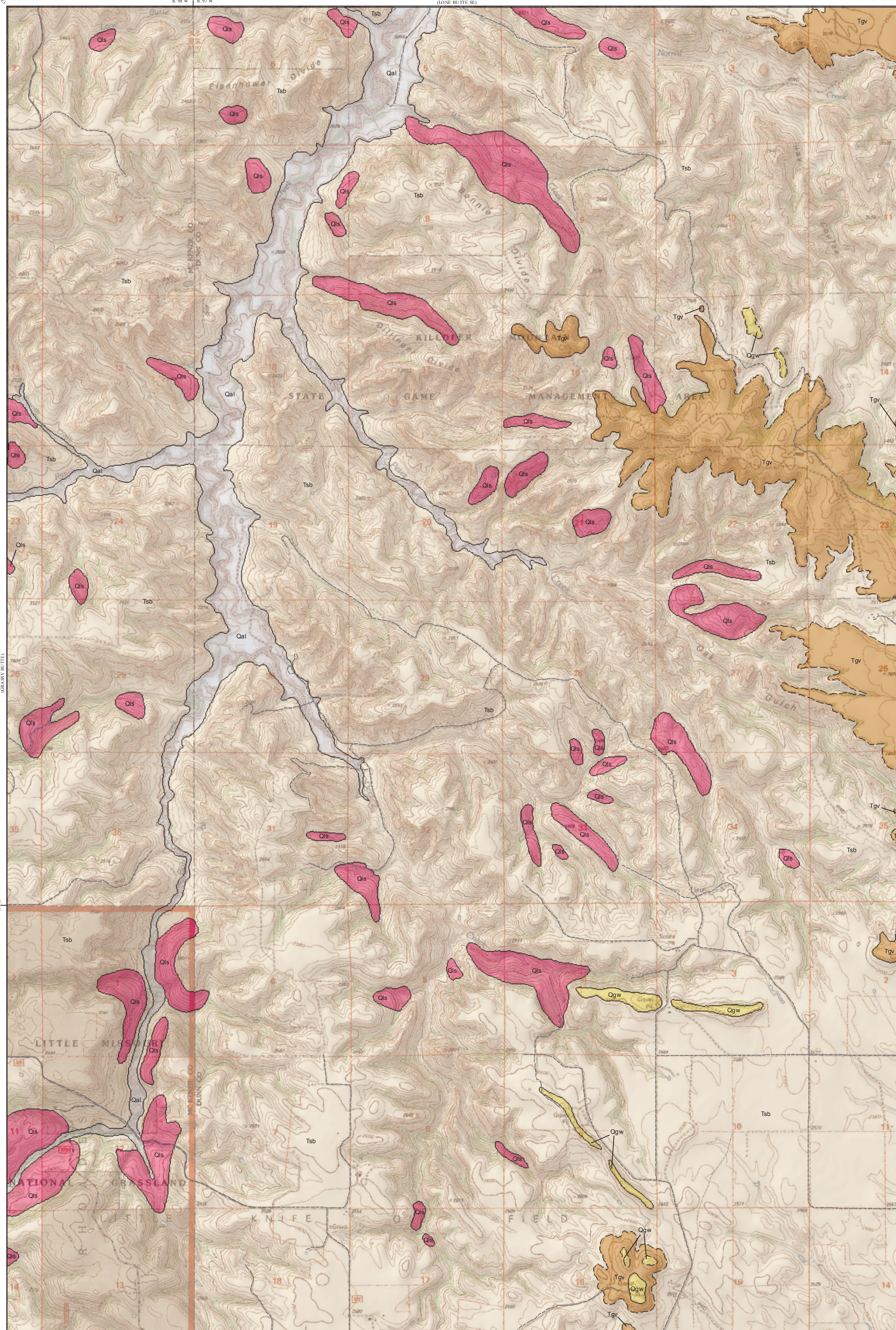
**Tsb** SENTINEL BUTTE FORMATION  
Alternating beds of grayish brown to gray sandstone, siltstone, mudstone, claystone, and lignite.

#### Geologic Symbols

- Known contact between two geologic units.
- - - - Approximate contact between two geologic units.

#### Other Features

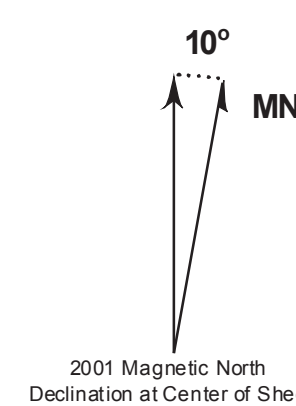
- - - - Unpaved Road



Scale 1:24,000

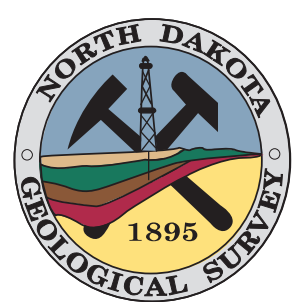


Lambert Conformal Conic Projection Standard Parallels 47° 22' 30" and 47° 30' 00"  
1927 North American Datum NGVD 1929  
USGS 7.5 Minute Topographic Map Contour Interval 20 Feet  
Road Layer Rectified to 2003 NAIP Digital Orthophoto



This geologic map was funded in part by the USGS National Cooperative Geologic Mapping Program.

Cartographic Compilation: Elroy L. Kadrmas



Petes Creek Quadrangle, North Dakota