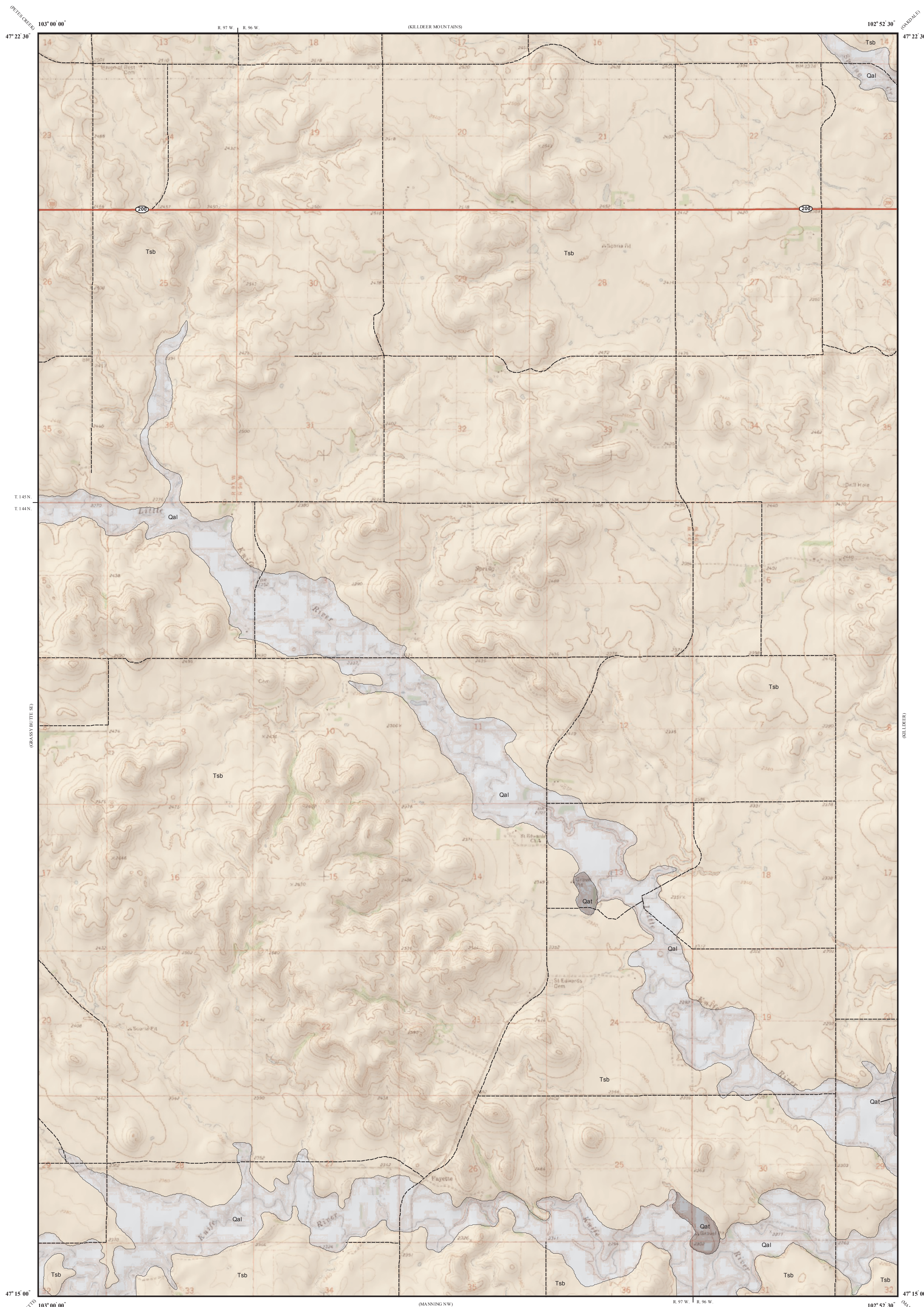


Surface Geology

Fayette Quadrangle, North Dakota

Edward C. Murphy

2004



UNIT DESCRIPTIONS

QUATERNARY SYSTEM

RECENT

QAHE FORMATION

Qal Alluvium
Brownish gray to black sand, silt, clay, and lenses of gravel; floodplain deposits (typically less than 30 feet thick) along recent drainages. Not differentiated where it overlies Qac.

PLEISTOCENE

COLEHARBOR GROUP

Qat Terrace Deposits
Five- to 20-foot-thick layers of sand and gravel (consisting primarily of silcrete, chert, flint, agate, petrified wood, siltstone) found beneath flat to gently undulating slopes adjacent to many of the major creeks and rivers.

TERTIARY SYSTEM

PALEOCENE

Tsb SENTINEL BUTTE FORMATION
Alternating beds of grayish brown to gray sandstone, siltstone, mudstone, claystone, and lignite.

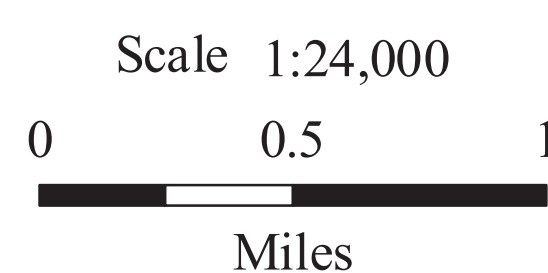
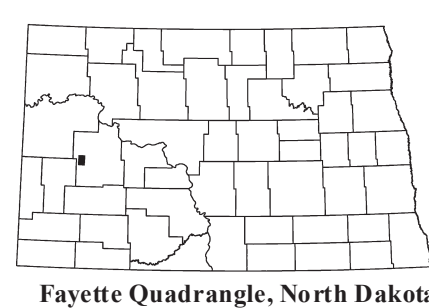
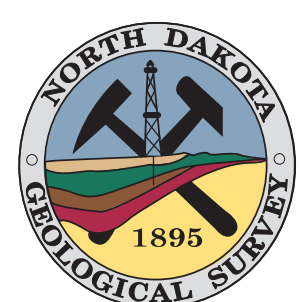
Geologic Symbols

— Known contact between two geologic units.

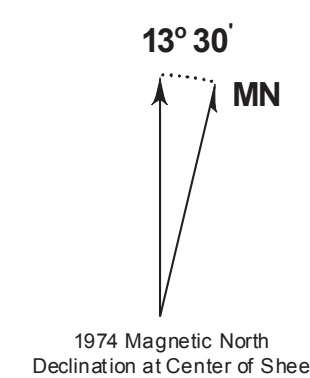
Other Features

— State Highway

--- Unpaved Road



Lambert Conformal Conic Projection
Standard Parallels 47° 15' 00" and 47° 22' 30"



This geologic map was funded in part by the USGS National Cooperative Geologic Mapping Program.