

# Surface Geology

## Killdeer Quadrangle, North Dakota

Edward C. Murphy

2004

### UNIT DESCRIPTIONS

#### QUATERNARY SYSTEM

RECENT

#### OLIGOCENE

**Qal** Alluvium

Brownish gray to black sand, silt, clay, and lenses of gravel; floodplain deposits (typically less than 30 feet thick) along recent drainages. Not differentiated where it overlies Qac.

PLEISTOCENE

#### COLEHARBOR GROUP

**Qac** Proglacial Channels

Generally contain 50 to 200 feet of sand and gravel, silt, clay, and till (meltwater-channel fill). Overlain by Recent alluvium (Qal) of variable thickness. This map unit was created to distinguish between these very thick channel deposits and the moderate to thin deposits mapped as Qal.

**Qat** Terrace Deposits

Five- to 20-foot-thick layers of sand and gravel (consisting primarily of siltstone, chert, flint, agate, petrified wood, siltstone) found beneath flat to gently undulating slopes adjacent to many of the major creeks and rivers.

#### TERTIARY SYSTEM

PALEOCENE

**Tsb** SENTINEL BUTTE FORMATION

Alternating beds of grayish brown to gray sandstone, siltstone, mudstone, claystone, and lignite.

#### Geologic Symbols

— Known contact between two geologic units.

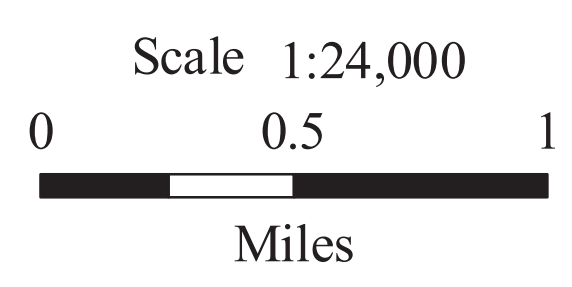
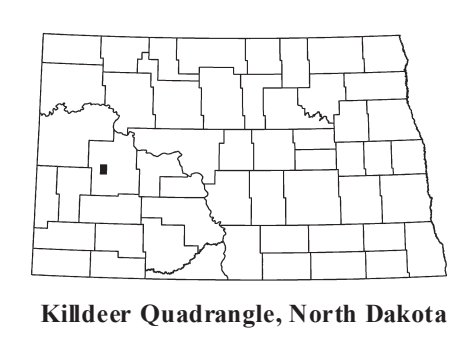
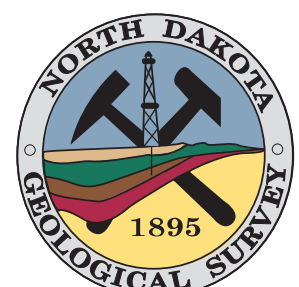
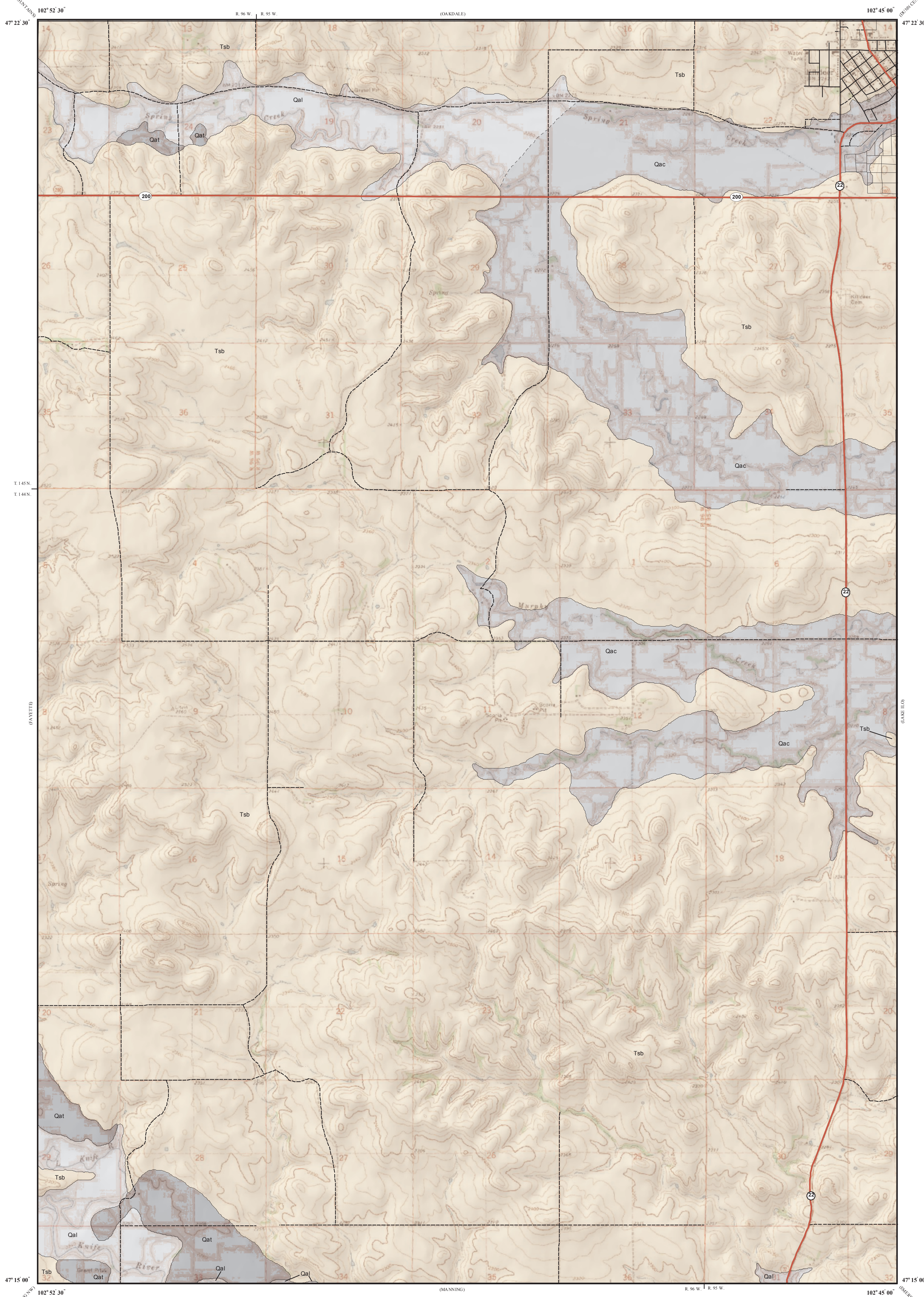
- - - Approximate contact between two geologic units.

#### Other Features

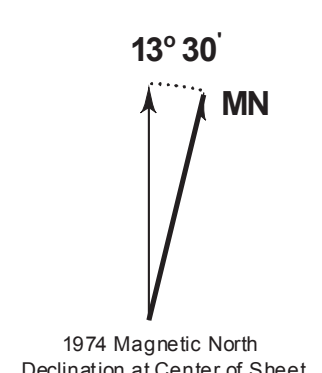
State Highway

Paved Road

Unpaved Road



Lambert Conformal Conic Projection  
Standard Parallels 47° 15' 00" and 47° 22' 30"



1974 Magnetic North  
Declination at Center of Sheet

This geologic map was funded in part by the  
USGS National Cooperative Geologic Mapping Program.