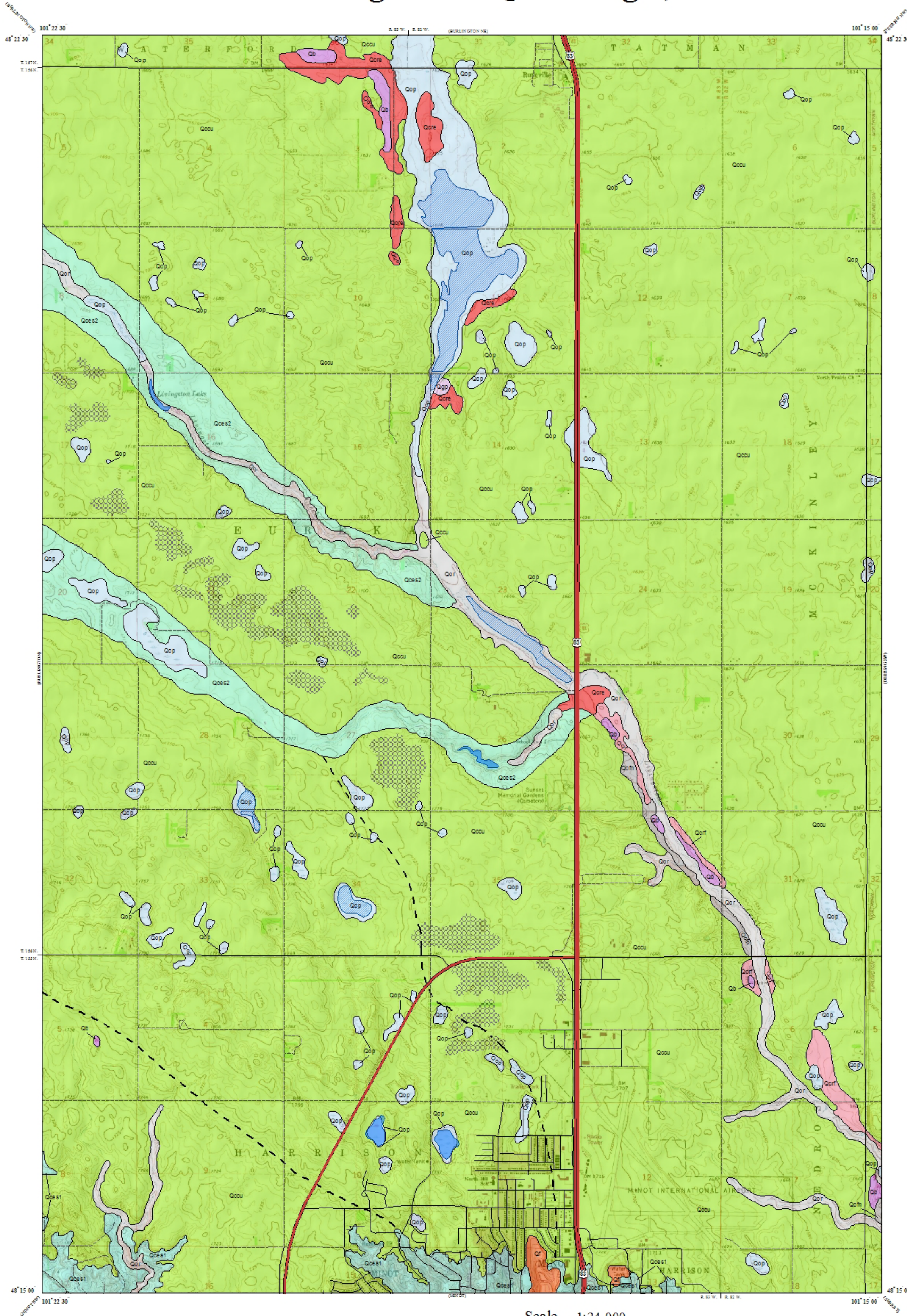


Surface Geology

Burlington SE Quadrangle, North Dakota

Lorraine A. Manz
2006



EXPLANATION

- Qf Fill
- Qb Borrow Area (abandoned and/or reclaimed)
Includes gravel pits and disused mine workings.
- Qbp Borrow Area (active)

QUATERNARY SYSTEM

HOLOCENE

OAHE FORMATION

- Qofn Alluvial Fans
Dark, obscurely bedded clay and silt deposited by ephemeral streams on sloping surfaces near the mouths of coulees.
- Qop Pond and Slough Sediment
Clay, silt, and organic debris; obscurely bedded; dark colored; deposited in modern ponds and sloughs.
- Qor River Sediment
Dark, occasionally cross-bedded overbank sediment deposited on the floodplains of modern streams. Contains some sand and gravel (channel sediment).

PLEISTOCENE

COLEHARBOR GROUP

Ice-Contact Deposits

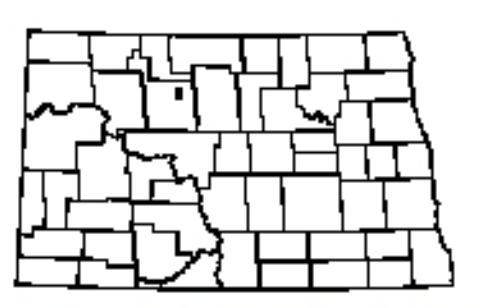
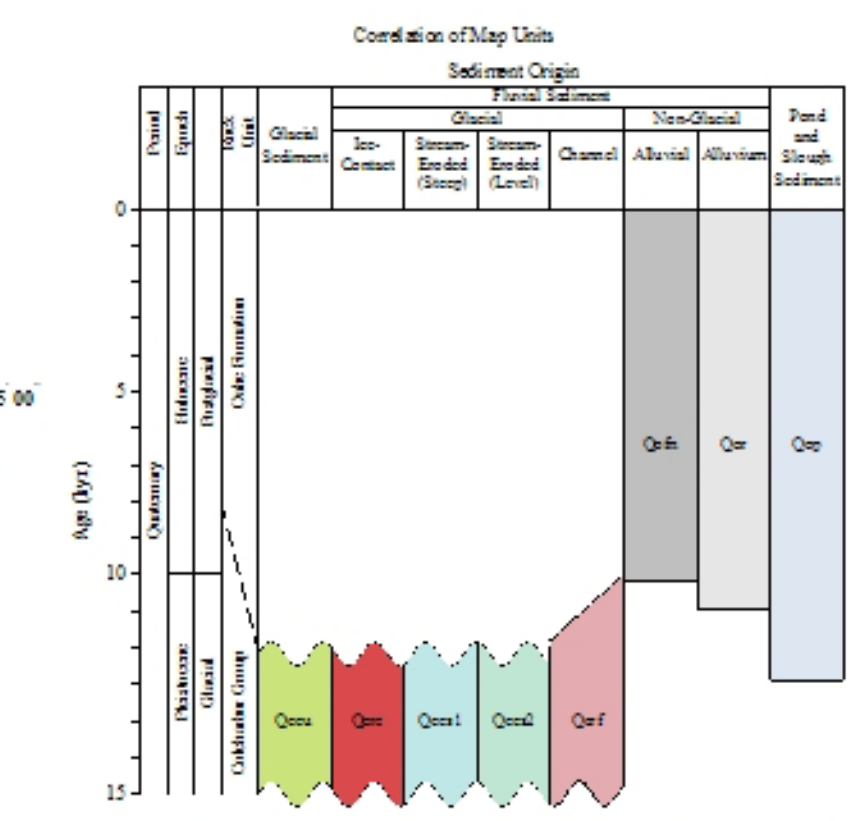
- Qecu Till
Poorly sorted, unbedded mixture of rock, cobbles, pebbles, gravel, sand, silt, and clay deposited by active and stagnating ice. Flat to undulating topography with poorly to moderately well-integrated drainage. Subdued disintegration features visible on air photos.
- Qes1 Stream-Eroded Glacial Sediment
Unbedded, poorly sorted rock, cobbles, gravel, sand, silt, and clay with patches of bedded sand and silty sand. Steeply sloping, bouldery surface found mainly along the slopes of the Des Lacs and Souris River valleys and their tributaries.
- Qes2 Stream-Eroded Glacial Sediment
Unbedded, poorly sorted rock, cobbles, gravel, sand, silt, and clay with patches of bedded sand and silty sand. Nearly flat surface, bouldery in places.
- Qere Ice-Contact Fluvial Deposits
Poorly to well-sorted sand and gravel intermixed with cobbles, boulders and till. Cross-bedding, laminae, and soft-sediment deformation structures common. Includes eskers and kames.
- Qerf Channel Sediment
Moderately well-sorted, cross-bedded and plane-bedded sand and gravel deposited as point bars and outwash. Includes cobble and boulder-laden sediments of the Des Lacs and Souris spillways.

Geologic Symbols

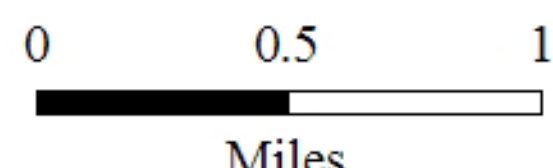
- Known contact between two geologic units.
- - - - Approximate contact between two geologic units.
- - - - Boundary between different-age glacial deposits. Sediments outside the broken lines were deposited during a readvance of the Souris Lobe of the Late Wisconsinan Laurentide ice sheet about 12,000 years ago. The till is texturally and lithologically similar, but slightly younger by a few hundred years, than the till confined with the demarcated area.
- Areas of conspicuous, low-relief, ring shaped hummocks.

Other Features

- Water
- Water, Intermittent
- Federal Highway
- Paved Road
- Unpaved Road



Scale 1:24,000



Lambert Conformal Conic Projection Standard Parallels 45° 15' 00" and 48° 22' 30"
1927 North American Datum NGVD 1929
USGS 7.5 Minute Topographic Map Contour Interval 5 Feet
Road and Hydrologic Layers Rasterized to 2003 NAIP Digital Orthophoto

