

# Surface Geology

## Burlington Quadrangle, North Dakota

**Lorraine A. Manz**  
2006

### EXPLANATION

- Borrow Area (abandoned and/or reclaimed)  
Includes gravel pits and disused mine workings.
- Borrow Area (active)

### QUATERNARY SYSTEM

#### HOLOCENE

- Qls** **Landslide**  
A mass of glacial and/or preglacial material that has slumped downslope.
- QAHE FORMATION**
- Qofn** **Alluvial Fans**  
Dark, obscurely bedded clay and silt deposited by ephemeral streams on sloping surfaces near the mouths of coulees.
- Qop** **Pond and Slough Sediment**  
Clay, silt, and organic debris; obscurely bedded; dark colored; deposited in modern ponds and sloughs.
- Qor** **River Sediment**  
Dark, occasionally cross-bedded overbank sediment deposited on the floodplains of modern streams. Contains some sand and gravel (channel sediment).

#### PLEISTOCENE

##### COLEHARBOR GROUP

- Ice-Contact Deposits**
- Qecu** **Till**  
Poorly sorted, unbedded mixture of rock, cobbles, pebbles, gravel, sand, silt, and clay deposited by active and stagnating ice. Flat to undulating topography with poorly to moderately well-integrated drainage. Subdued disintegration features visible on air photos.
- Glaciofluvial Sediment**
- Qes1** **Stream-Eroded Glacial Sediment**  
Unbedded, poorly sorted rock, cobbles, gravel, sand, silt, and clay with patches of bedded sand and silty sand. Steeply sloping, bouldery surface found mainly along the slopes of the Des Lacs and Souris River valleys and their tributaries.
- Qes2** **Stream-Eroded Glacial Sediment**  
Unbedded, poorly sorted rock, cobbles, gravel, sand, silt, and clay with patches of bedded sand and silty sand. Nearly flat surface, bouldery in places.
- Qere** **Ice-Contact Fluvial Deposits**  
Poorly to well-sorted sand and gravel intermixed with cobbles, boulders and till. Cross-bedding, laminae, and soft-sediment deformation structures common. Includes eskers and kames.
- Qerf** **Channel Sediment**  
Moderately well-sorted, cross-bedded and plane-bedded sand and gravel deposited as point bars and outwash. Includes cobble and boulder-laden sediments of the Des Lacs and Souris spillways.

#### TERTIARY SYSTEM

##### PALEOCENE

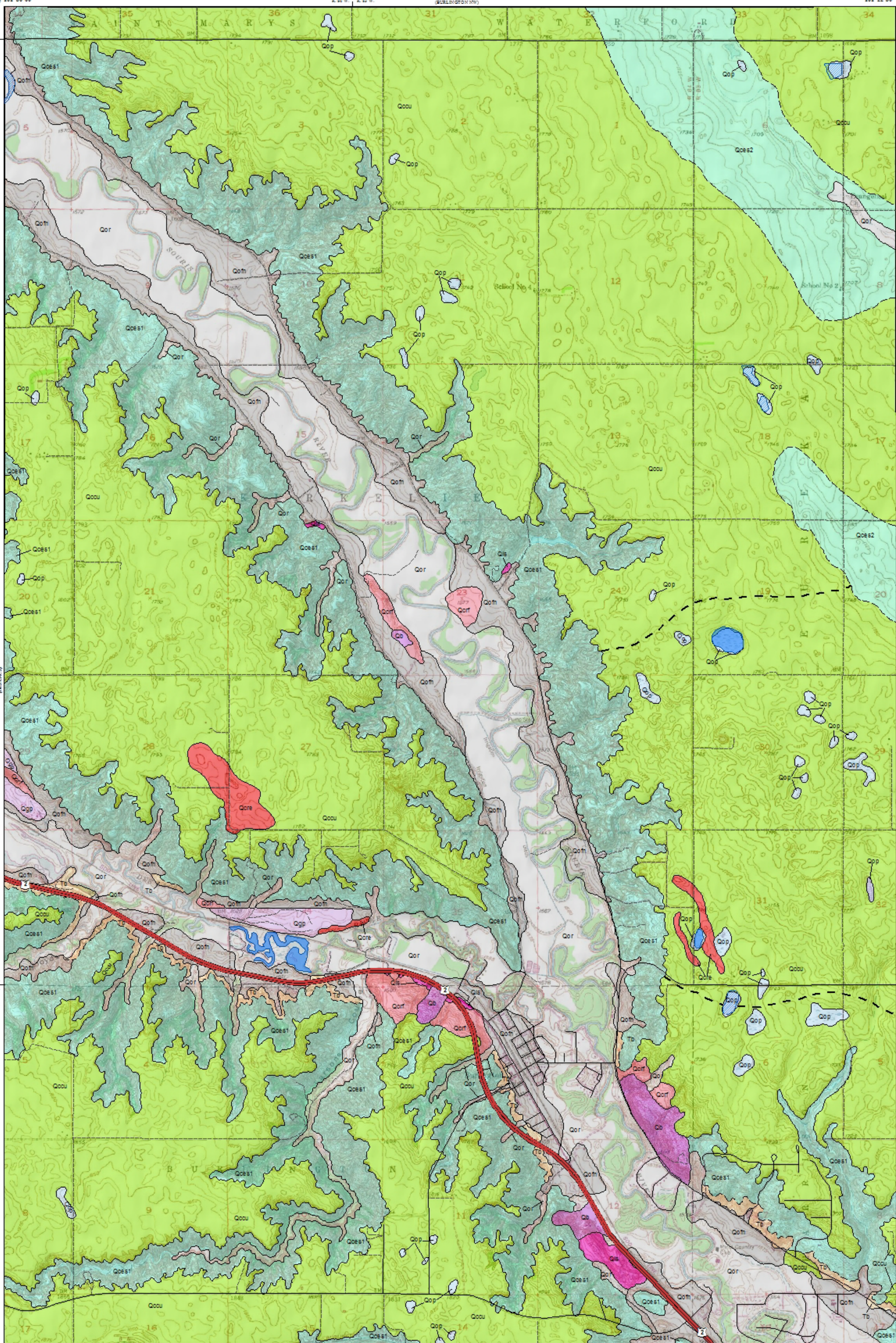
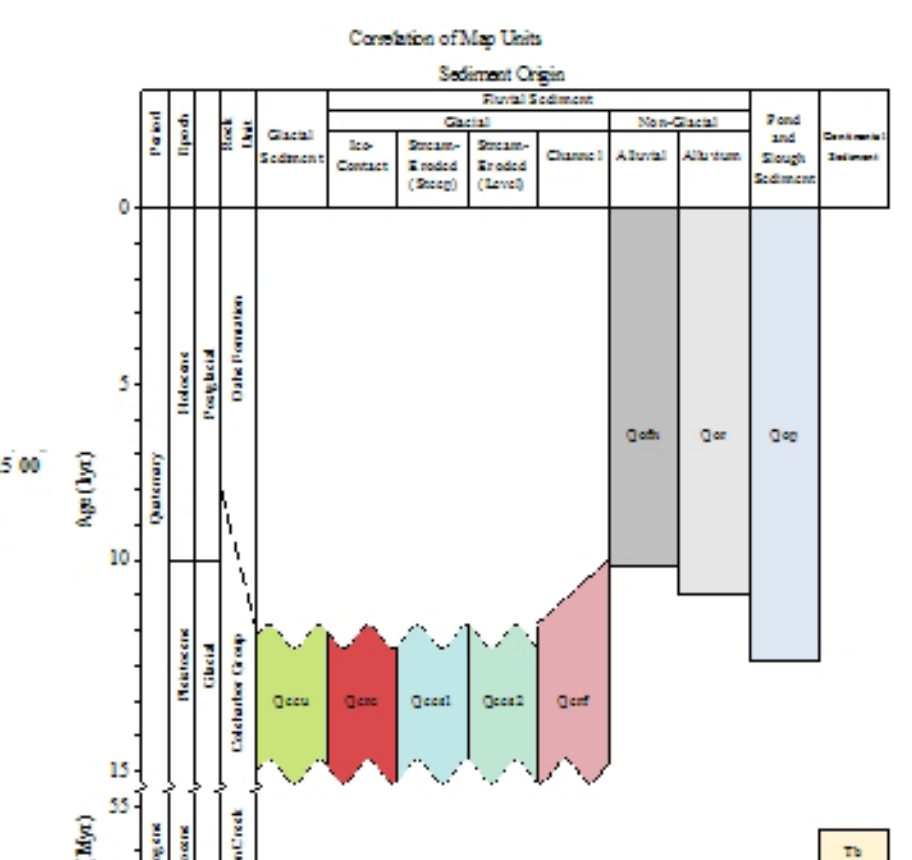
- Tb** **BULLION CREEK FORMATION**  
River, lake and swamp sediment. Yellow-brown sand, silt, clay, and lignite.

#### Geologic Symbols

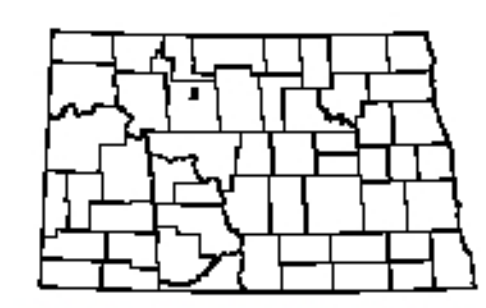
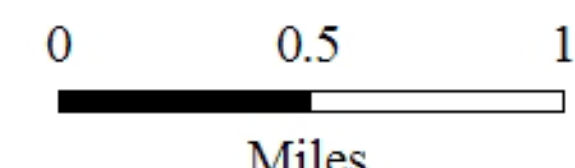
- Known contact between two geologic units
- Approximate contact between two geologic units
- Boundary between different-age glacial deposits. Sediments outside the broken lines were deposited during a readvance of the Souris Lobe of the Late Wisconsinan Laurentide ice sheet about 12,000 years ago. The till is texturally and lithologically similar, but slightly younger by a few hundred years, than the till confined with the demarcated area.

#### Other Features

- Water
- Water, Intermittent
- Federal Highway
- Paved Road
- Unpaved Road



Scale 1:24,000



Burlington Quadrangle, North Dakota

Lambert Conformal Conic Projection Standard Parallels 45° 15' 00" and 45° 22' 30"  
1927 North American Datum NGVD 1929  
USGS 7.5 Minute Topographic Map Contour Interval 5 Feet  
Road and Hydrologic Layers Restored to 2003 NAIP Digital Orthophoto