

# Surface Geology

## Saddle Butte Quadrangle, North Dakota

**Edward C. Murphy**  
2007

### EXPLANATION

#### QUATERNARY SYSTEM

##### RECENT

##### OAHE FORMATION

**Qal** Alluvium

Brownish gray to black sand, silt, clay, and lenses of gravel; flood-plain deposits along recent drainages. Includes lower terrace deposits. Typically less than 50 feet thick.

##### RECENT/PLEISTOCENE

**Qls** Landslide Deposits

Variable mixture of strata and deposits that have slid to the base of steep slopes.

##### PLEISTOCENE

##### COLEHARBOR GROUP

**Qcg** Glacial Deposits

Grayish brown, sandy, silty, bouldery clay with lenses of sand and gravel (glacial till). May occasionally include thick deposits of glacial outwash.

#### TERTIARY SYSTEM

##### PALEOCENE

**Tsb** SENTINEL BUTTE FORMATION

Alternating beds of grayish brown to gray sandstone, siltstone, mudstone, claystone, and lignite.

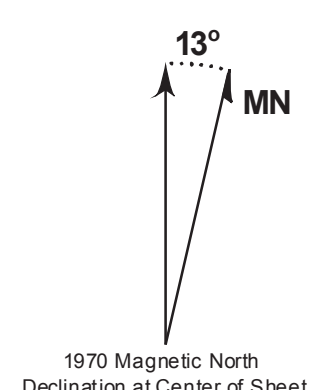
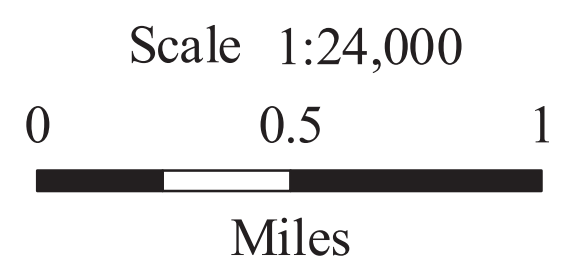
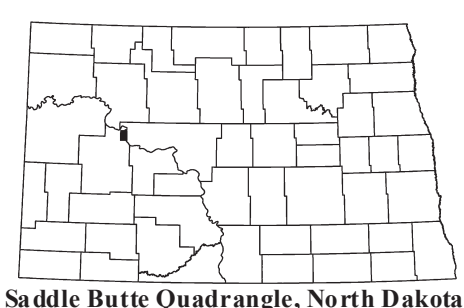
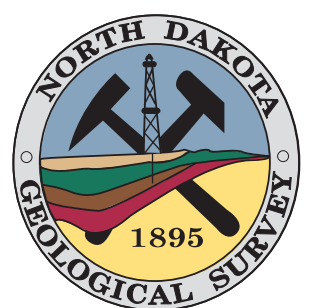
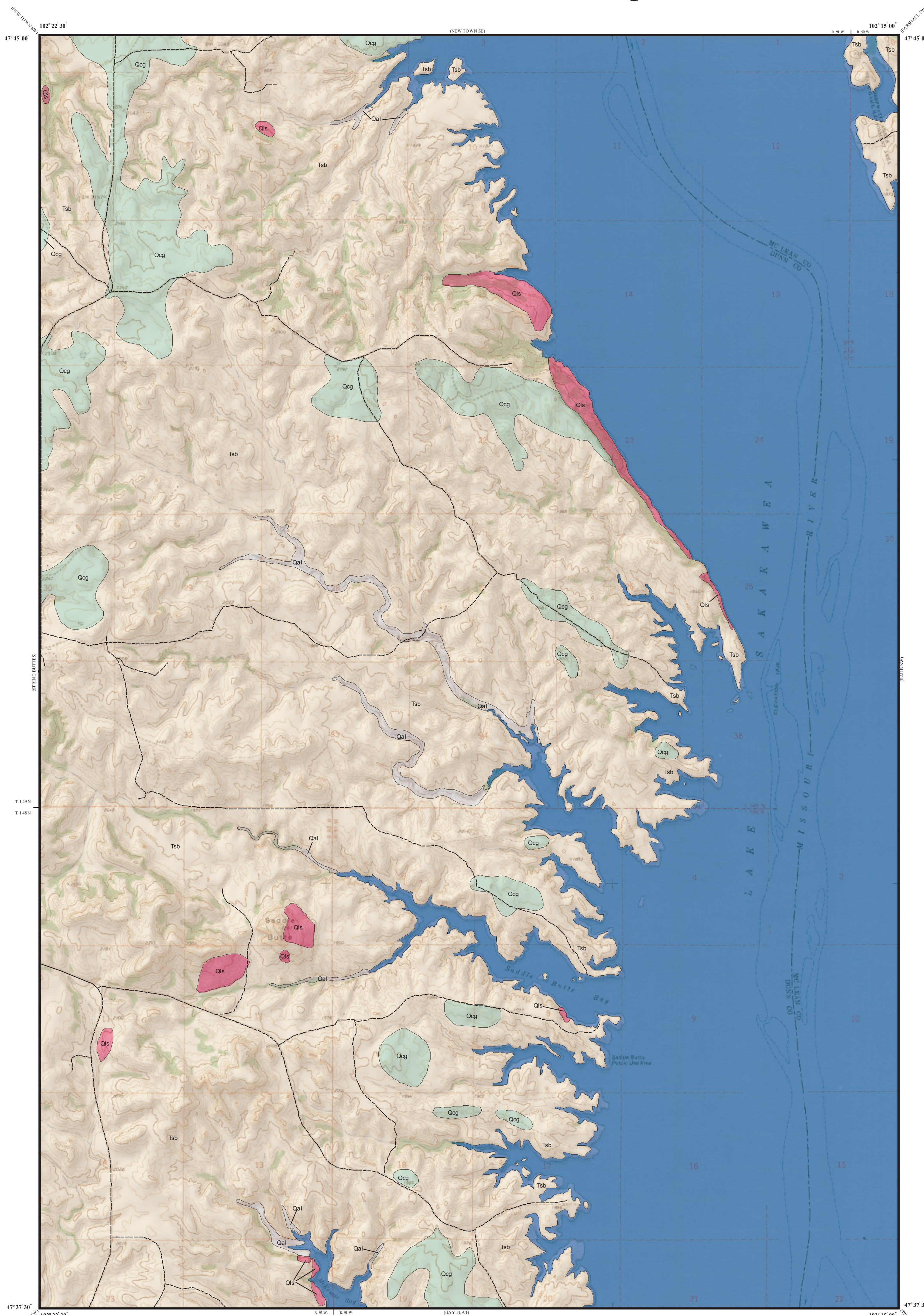
#### Geologic Symbols

— Known contact between two geologic units.

#### Other Features

Water

Unpaved Road



Lambert Conformal Conic Projection Standard Parallels 47° 37' 30" and 47° 45' 00"  
1927 North American Datum NGVD 1929  
USGS 7.5 Minute Topographic Map Contour Interval 20 Feet  
Road Layer Recultured to 2003 NAIP Digital Orthophoto