

Surface Geology

String Buttes Quadrangle, North Dakota

Edward C. Murphy
2007

EXPLANATION

QUATERNARY SYSTEM

RECENT

OAHE FORMATION

Qal Alluvium

Brownish gray to black sand, silt, clay, and lenses of gravel; flood-plain deposits along recent drainages. Includes lower terrace deposits. Typically less than 50 feet thick.

RECENT/PLEISTOCENE

Qls Landslide Deposits

Variable mixture of strata and deposits that have slid to the base of steep slopes.

PLEISTOCENE

COLEHARBOR GROUP

Qcg Glacial Deposits

Grayish brown, sandy, silty, bouldery clay with lenses of sand and gravel (glacial till). May occasionally include thick deposits of glacial outwash.

Qsc Glacial Channels

Generally contain less than 50 feet of channel fill deposits (sand and gravel, silt, and clay) typically much narrower than the proglacial channels. Overlain by Recent alluvium of variable thickness.

TERTIARY SYSTEM

PALEOCENE

Tsb SENTINEL BUTTE FORMATION

Alternating beds of grayish brown to gray sandstone, siltstone, mudstone, claystone, and lignite.

Geologic Symbols

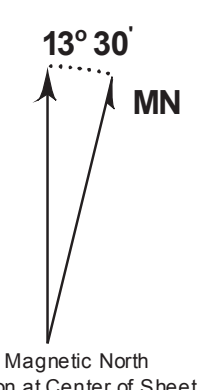
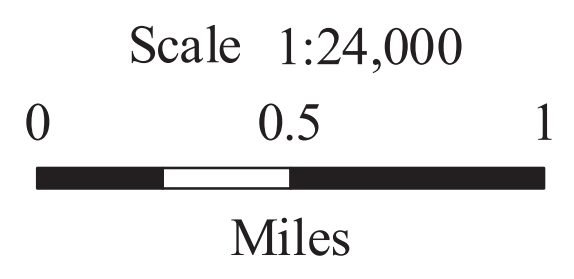
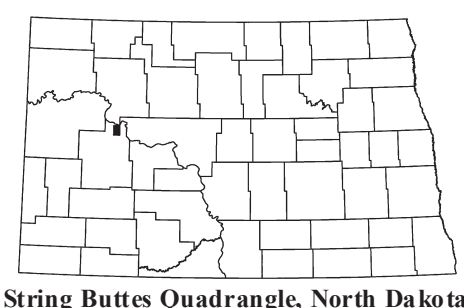
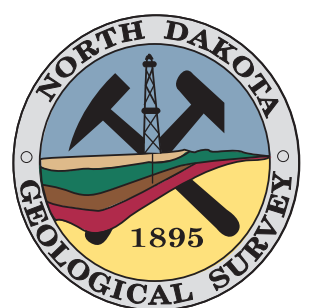
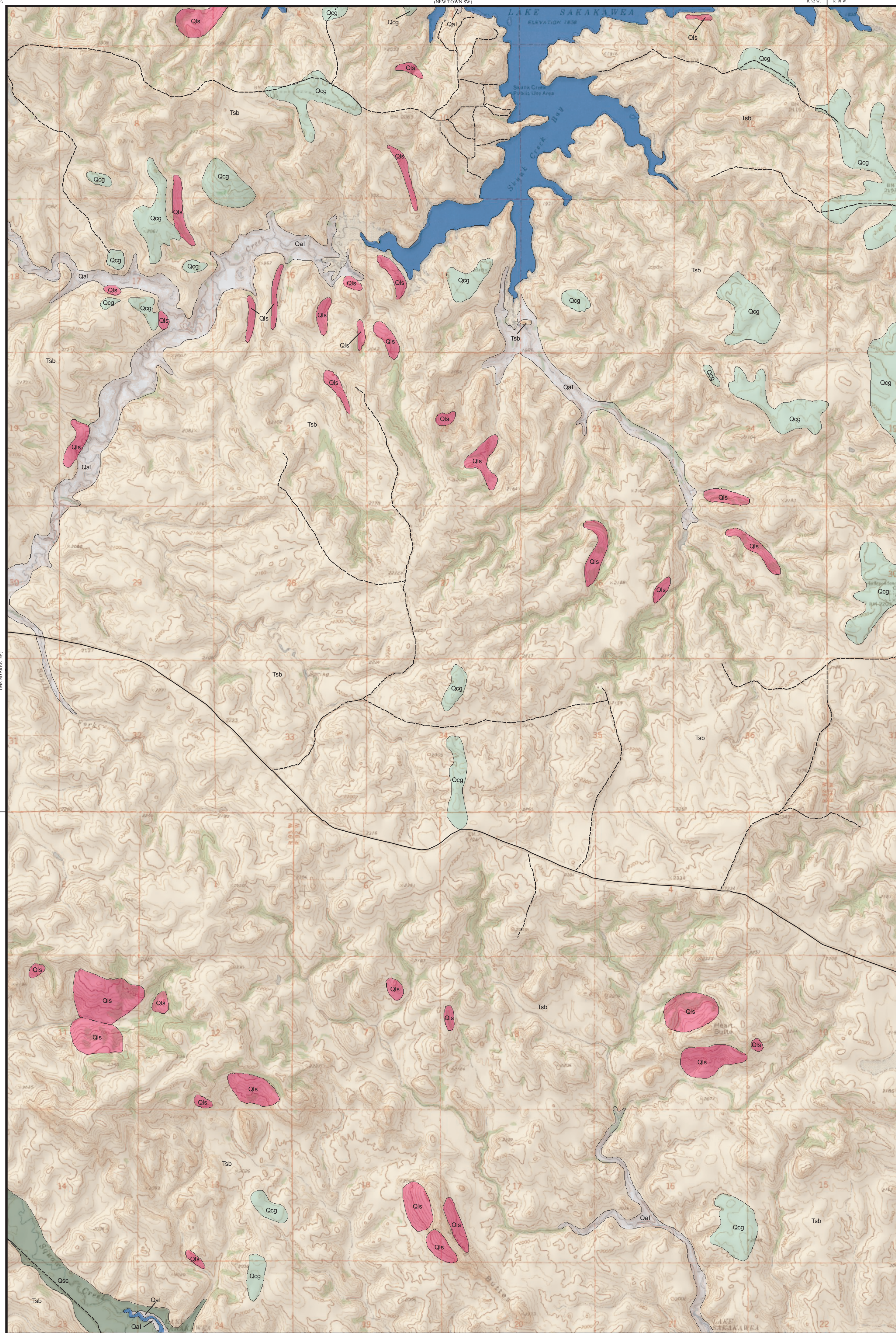
— Known contact between two geologic units.

Other Features

Water

Paved Road

Unpaved Road



Lambert Conformal Conic Projection Standard Parallels 47° 37' 30" and 47° 45' 00"
1927 North American Datum NGVD 1929
USGS 7.5 Minute Topographic Map Contour Interval 20 Feet
Road Layer Recultured to 2003 NAIP Digital Orthophoto