

Surface Geology

Towner Quadrangle, North Dakota

John P. Bluemle
2006

EXPLANATION

QUATERNARY SYSTEM

RECENT

OAHE FORMATION

- Qor** Alluvium
River and stream sediment. Dark obscurely bedded clay and silt (mainly overbank sediment); generally overlying cross-bedded sand (channel sediment); on plains of modern streams.
- Qos** Pond and Slough Sediment
Dark, obscurely bedded clay and silt; in modern ephemeral ponds.
- Qou** Windblown Sediment
Well-sorted, fine sand and black silt with obscure bedding and weak paleosols; undulating to slightly rolling.
- Qod** Windblown Sediment
Well-sorted, fine sand and black silt with obscure bedding and weak paleosols; strongly rolling dunes with up to 65 feet of local relief.

PLEISTOCENE

COLEHARBOR GROUP

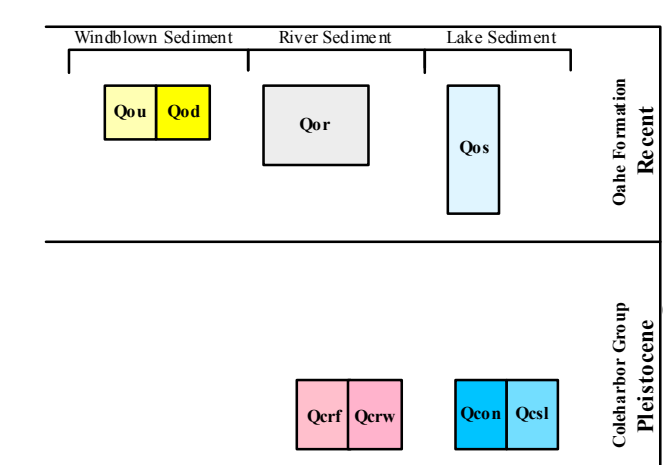
- Silt Facies**
Lake sediment. Laminated silty clay, clayey silt, and fine sand of glacier-dammed lakes; yellowish-brown to dark gray in exposures depending on weathering intensity.
- Qcon** Offshore to Nearshore Sediment
Silt to fine sand; generally obscured by a covering of eolian material.
- Qosl** Nearshore Lake Sediment
Sand and fine gravel deposited by streams near the lake shore.
- Sand and Gravel Facies**
River sediment. Moderately well-sorted, cross bedded sand and plane-bedded gravel, including sediment of meltwater rivers.
- Qcrf** Uncollapsed Flat Fluvial Plains
Flat-bedded sediment of nearly level plains and river terraces, commonly with braided channel scars, oxbows, and other relict markings; relief of 1 to 10 feet. Mainly along the Souris River with minor occurrences in tributary valleys.
- Qcrw** Sand or Gravel Patches
Gravel or sand overlying glacial sediment; water-worn till surface.

Geologic Symbols

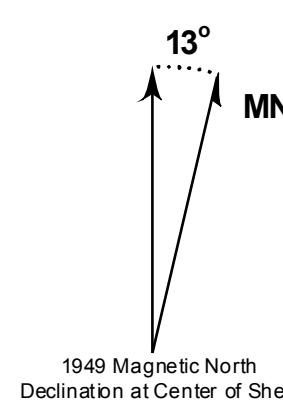
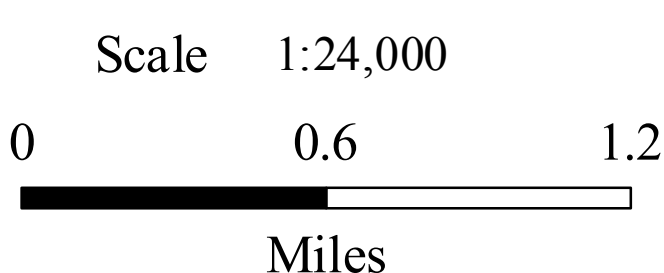
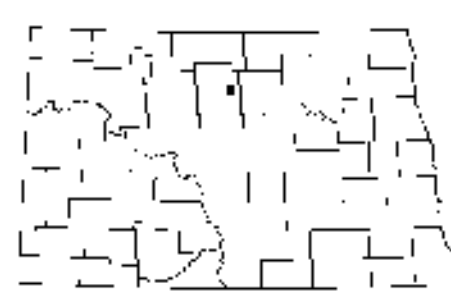
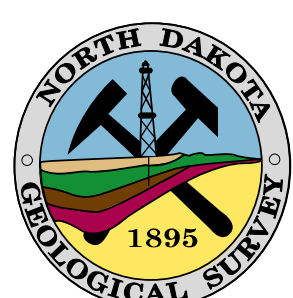
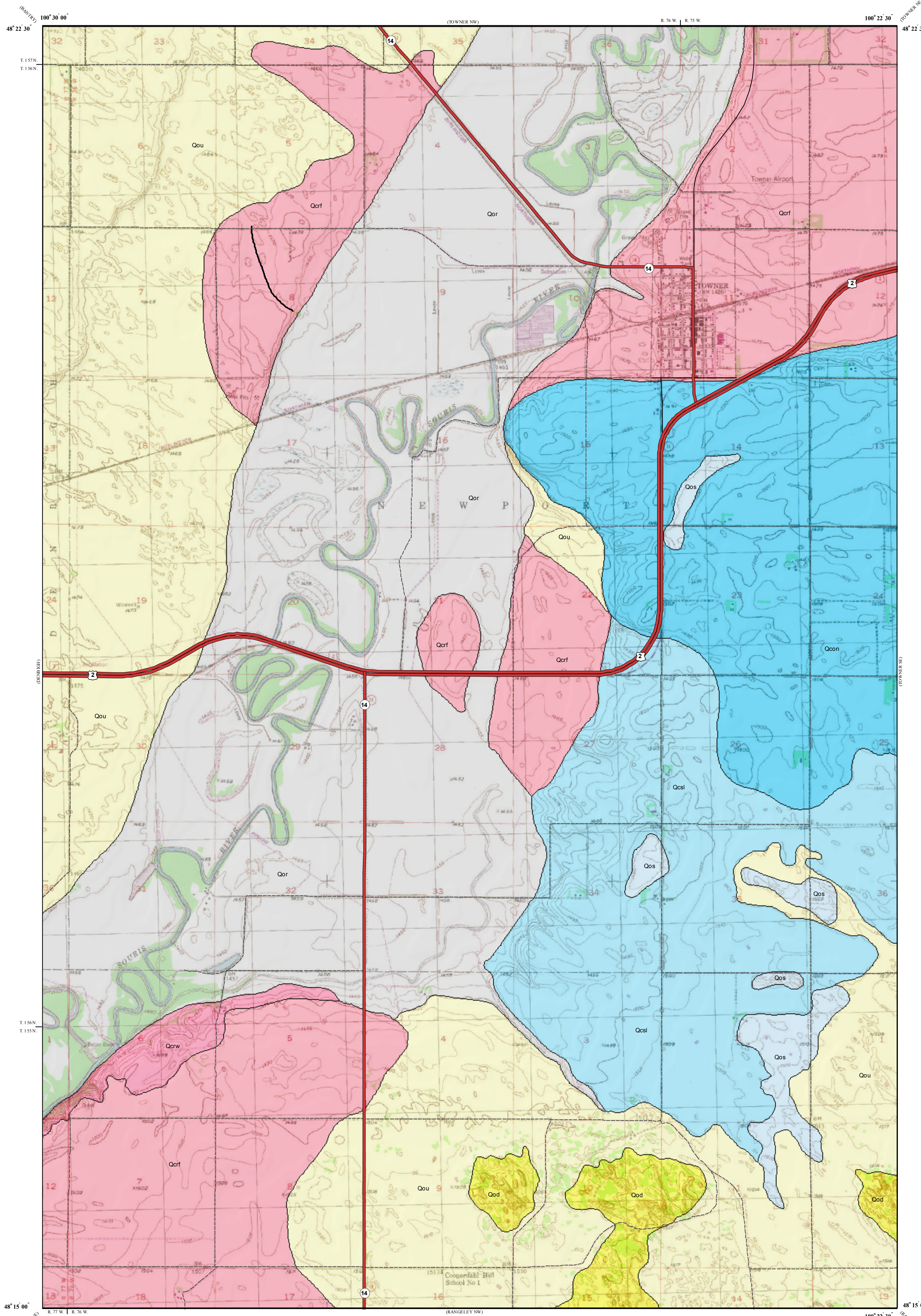
- Known contact between two geologic units
- Transverse Ridge

Other Features

- U.S. Highway
- State Highway
- Paved Road
- - - Unpaved Road



This geologic map was funded in part, by the USGS National Cooperative Geologic Mapping Program.



Lambert Conformal Conic Projection Standard Parallels 48° 15' 00" and 48° 22' 30"
1927 North American Datum NAD 1927
USGS 7.5 Minute Topographic Map Contour Interval 5 Feet
Road Layer Rectified to 2003 NAD Digital Orthophoto